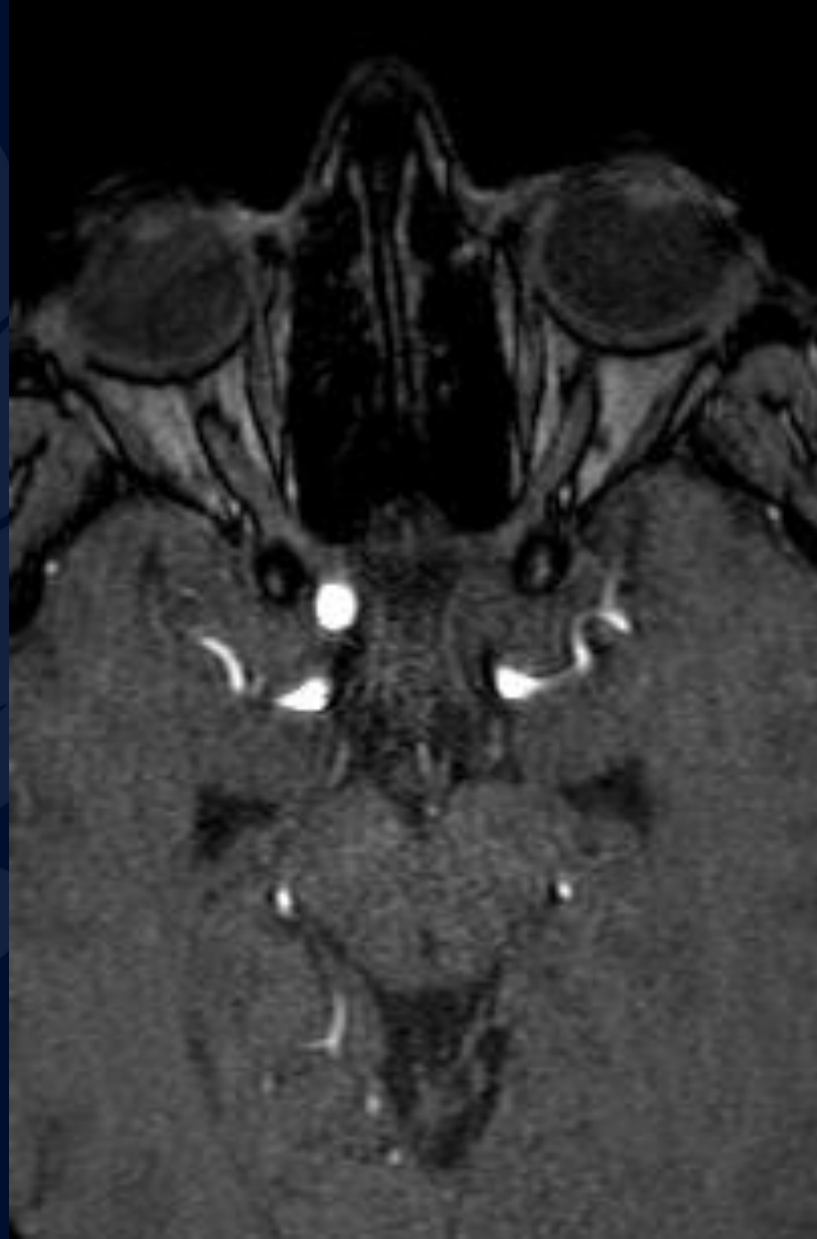


49-year-old female presenting with severe retroorbital pain

Andrew Klufas, MD, MBA

Racquel Helsing, MD

MRA



MRI 3D Angiogram



MRI 3D Angiogram



UConn
HEALTH

RADIOLOGY

A large, stylized oak leaf graphic in a dark blue color, positioned on the left side of the slide. It features detailed vein patterns and a lobed edge.

?

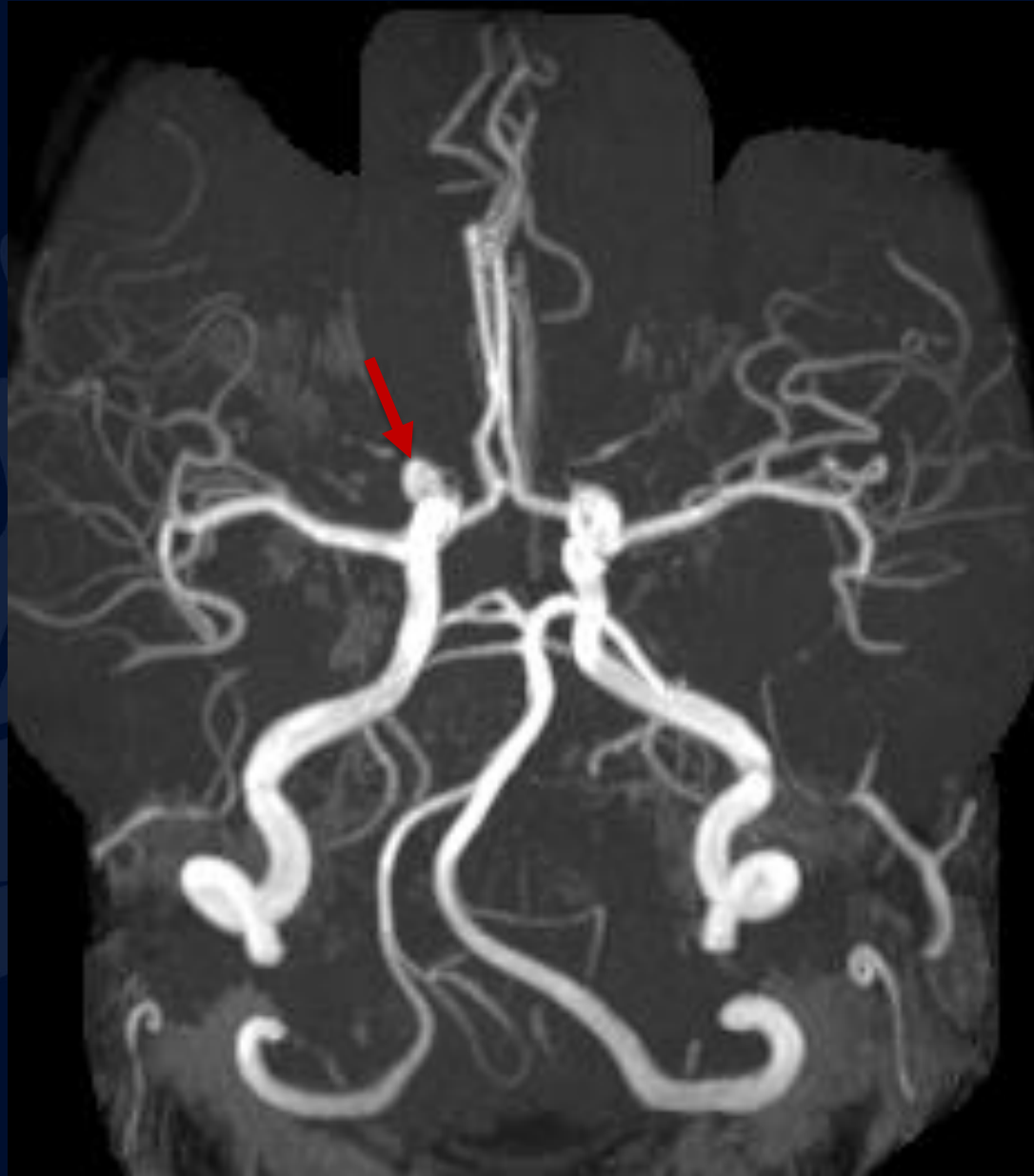
Ophthalmic Artery Aneurysm

MRA

Aneurysm of right
ophthalmic artery



MRI 3D Angiogram



Aneurysm of
right ophthalmic
artery

MRI 3D Angiogram



Aneurysm of
right ophthalmic
artery

Ophthalmic Artery Aneurysm

Ophthalmic artery aneurysms account for 5% or all cerebral aneurysms

- Usually asymptomatic when small, become symptomatic when large
- Symptoms can include retroorbital pain, diplopia, headache, syncope, and seizures

Differential

- Paraclinoidal mass
- Paraclinoid meningioma

References

Dinca EB, Brehar F, Giovani A, Ciurea AV. Challenges in a case of ophthalmic artery aneurysm associated with abnormal internal carotid arteries. *Asian J Neurosurg.* 2017 Jan-Mar;12(1):106-108. doi: 10.4103/1793-5482.144160. PMID: 28413549; PMCID: PMC5379780.

Guidetti B, La Torre E. Management of carotid-ophthalmic aneurysms. *J Neurosurg.* 1975 Apr;42(4):438-42. doi: 10.3171/jns.1975.42.4.0438. PMID: 1123662.

D'Souza D, Saber M, Sharma R, et al. Cerebral aneurysm. Reference article, *Radiopaedia.org* (Accessed on 17 Oct 2023) <https://doi.org/10.53347/rID-986>