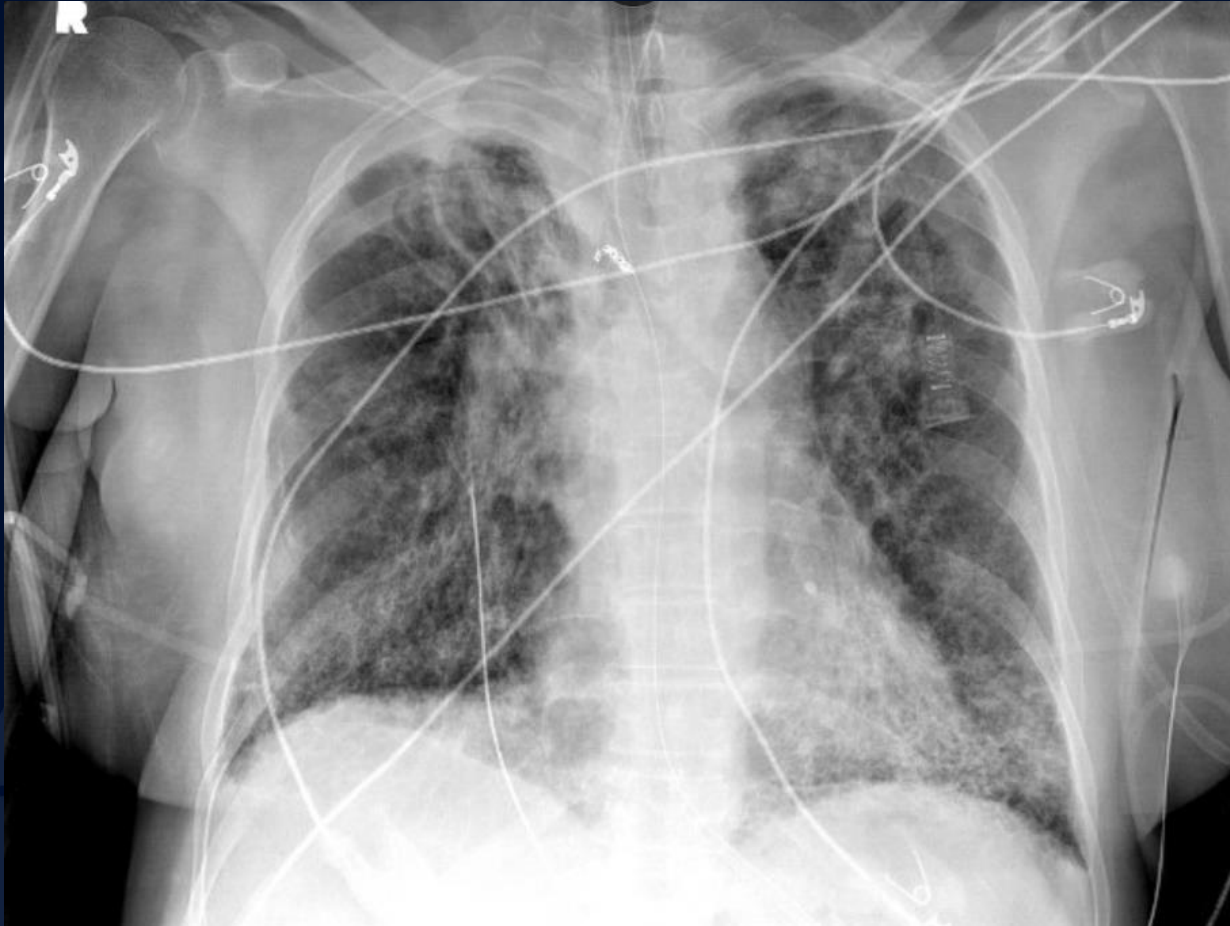
A large, stylized leaf graphic in a dark blue color, positioned on the left side of the slide. The leaf has a prominent vein structure and a wavy, serrated edge.

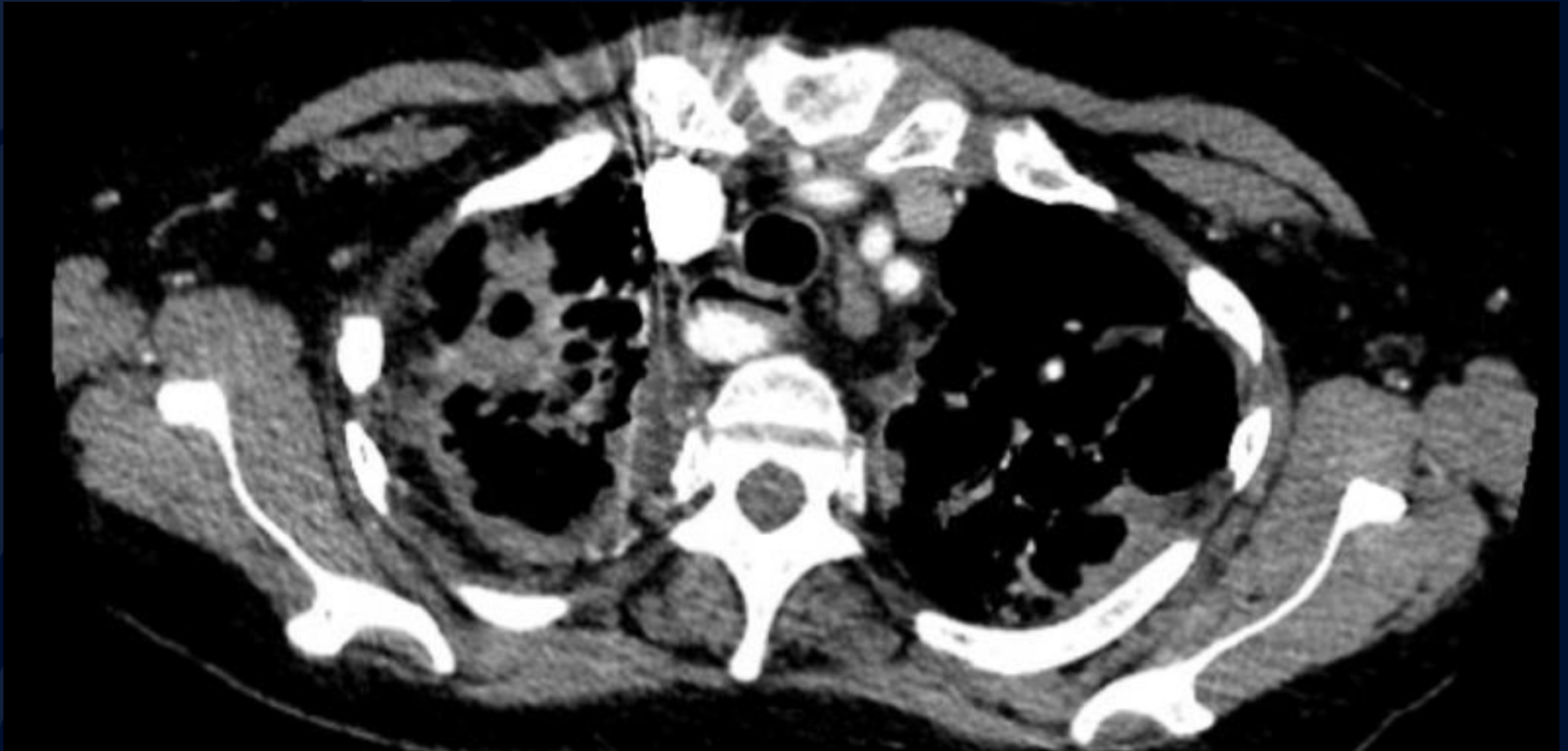
# 62-year-old female with dyspnea, increased work of breathing, and hemoptysis

Madeline Walker, MS3

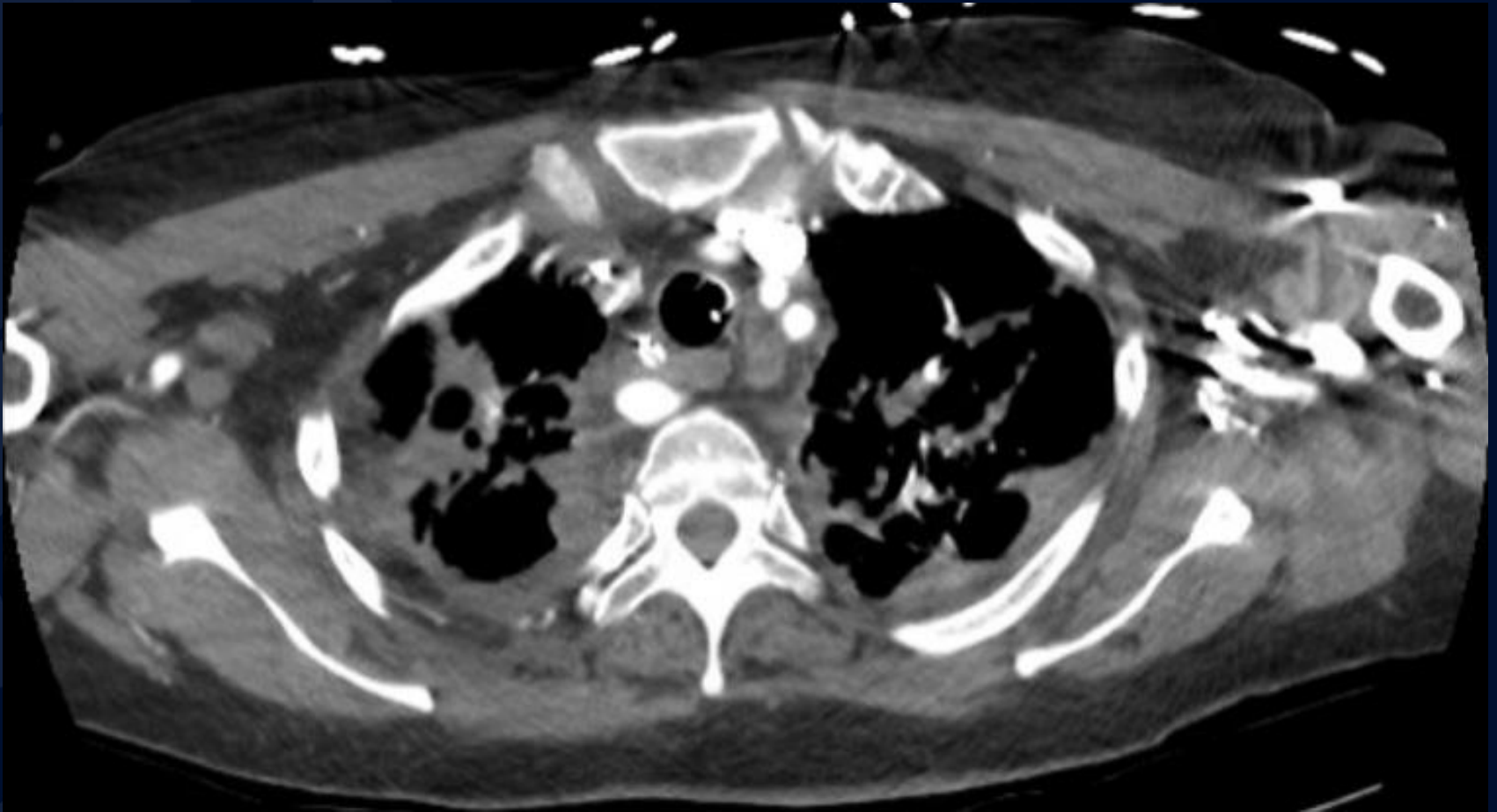
# Radiograph



# Contrast CT



# CT PE Study

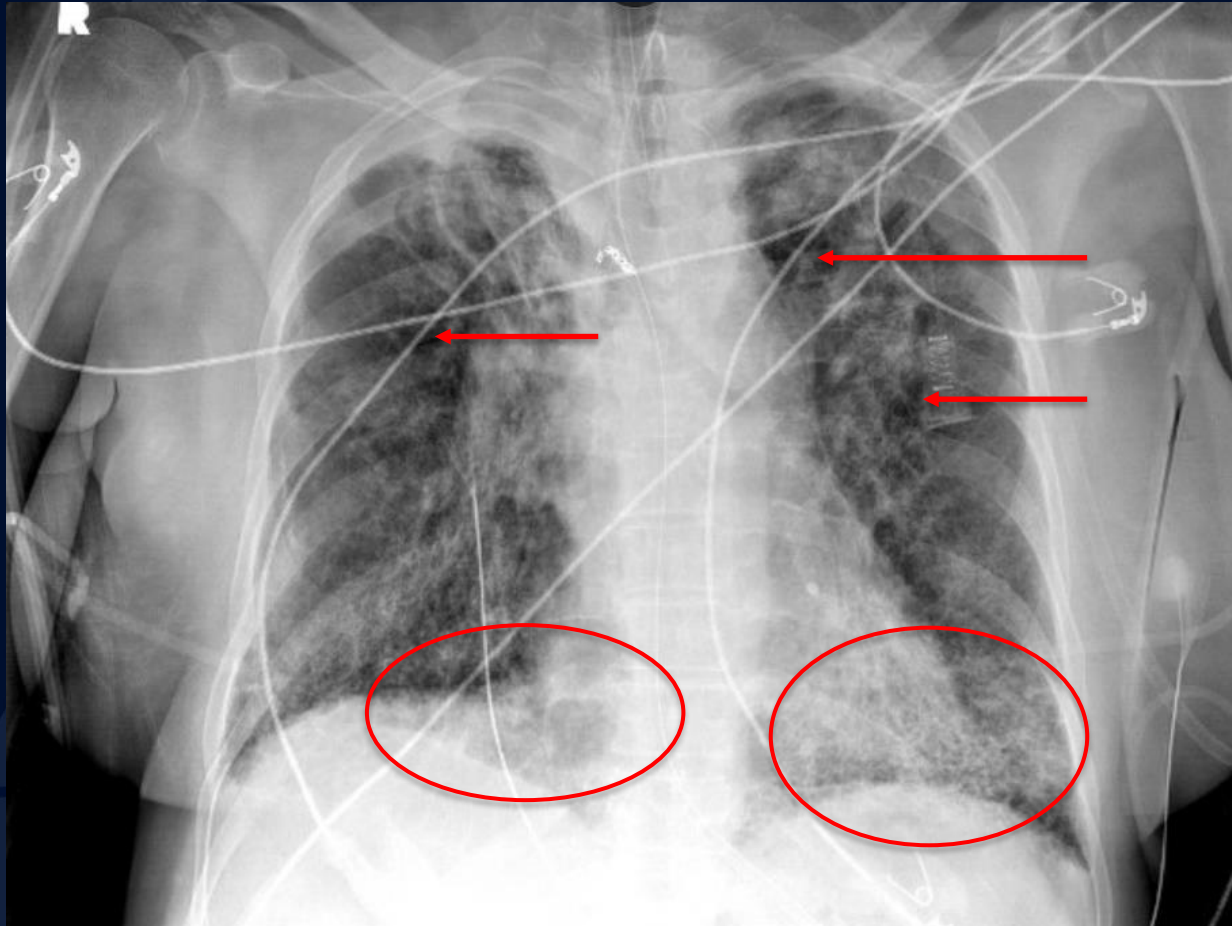


A large, stylized oak leaf graphic in a dark blue color, positioned on the left side of the slide. It features detailed vein patterns and a lobed edge.

?

# Chronic Necrotizing Pulmonary Aspergillosis

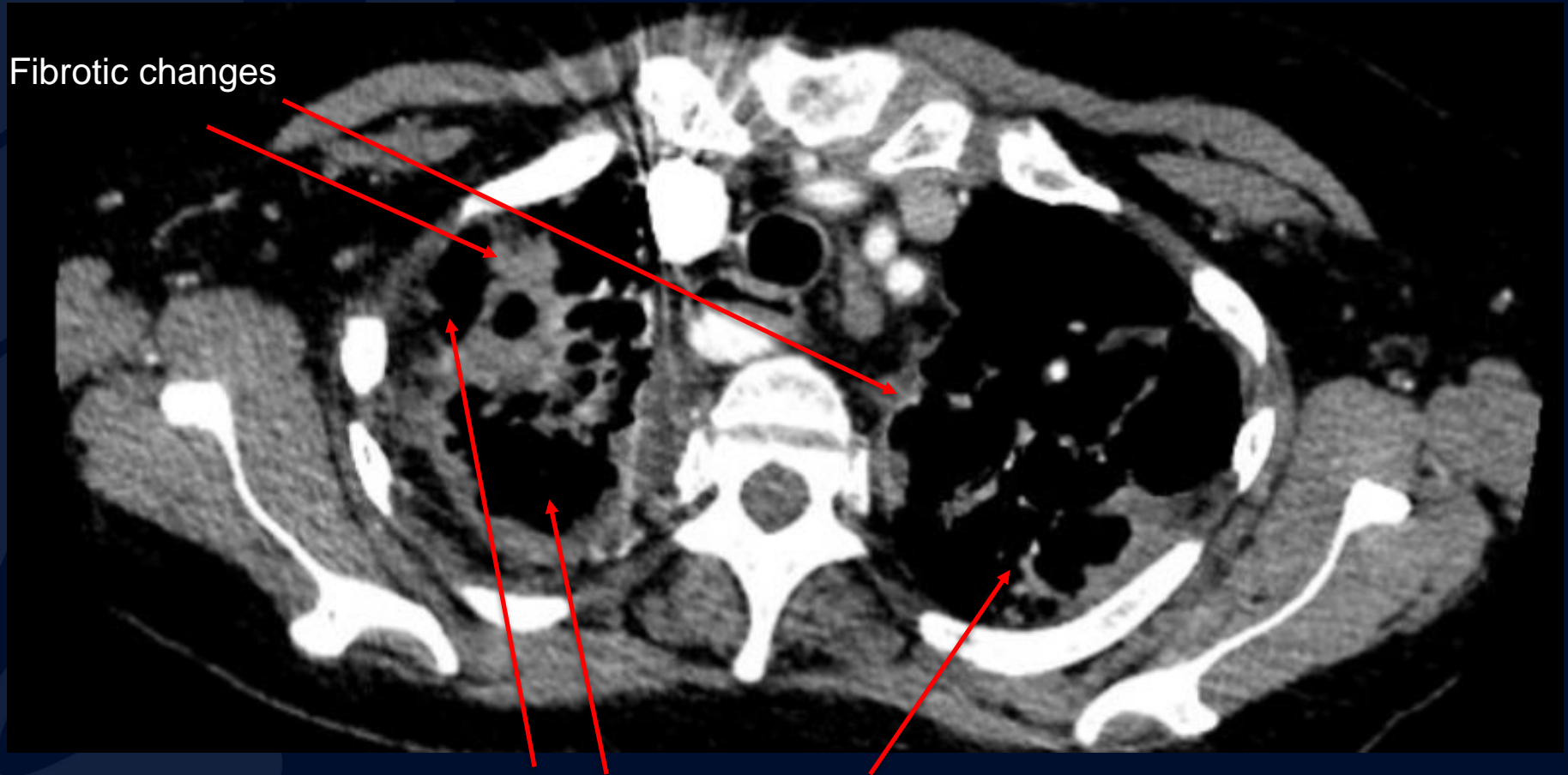
# Radiograph



Multiple upper lobe cavitary nodules

Lower lobe fibrosis

# CT IV Contrast

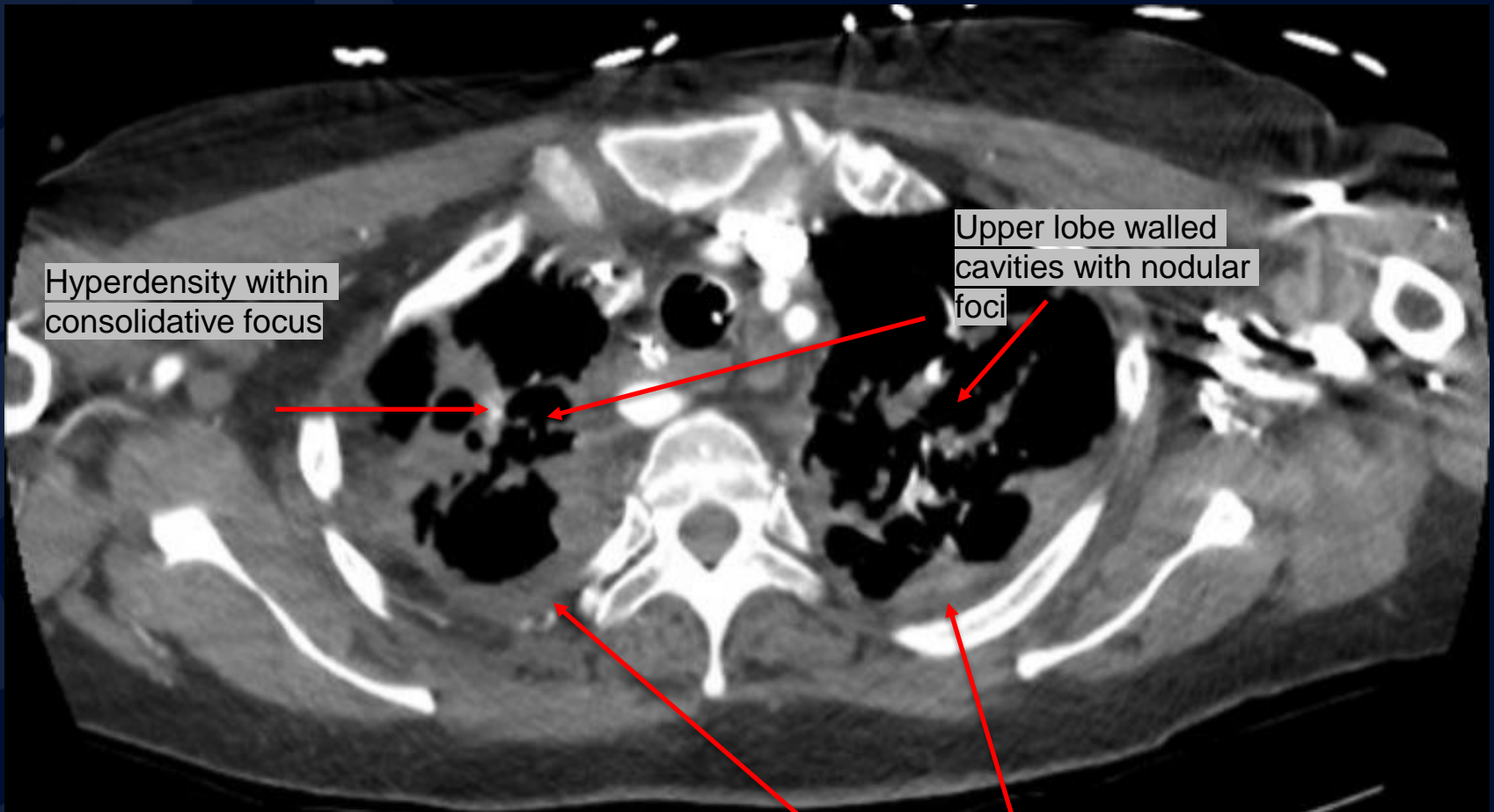


Fibrotic changes

Cavitary lesions with internal debris



# CTA Pulmonary



Hyperdensity within consolidative focus

Upper lobe walled cavities with nodular foci

Trace pleural effusions

# Chronic Necrotizing Pulmonary Aspergillosis

- A subacute form of chronic pulmonary aspergillosis with localized, progressive, inflammatory destruction of lung tissue
- Patients are typically middle-aged, and have some evidence of impairment of host defenses (diabetes mellitus, low dose corticosteroid therapy)
- Clinical presentation
  - Fever and productive cough
- Image findings demonstrate bilateral large upper lobe cavities with internal nodules and debris
  - Chest CT shows infiltrative and cavitory disease often accompanied by a mycetoma

# References

- Aquino, S. L., Kee, S. T., Warnock, M. L., & Gamsu, G. (1994). Pulmonary Aspergillosis: Imaging Findings with Pathologic Correlation. *American Journal of Roentgenology*.
- Binder, R. E., Faling, J., Pugatch, R. D., Mahasaen, C., & Snider, G. L. (1982). Chronic Necrotizing Pulmonary Aspergillosis: A Discrete Clinical Entity. *Medicine*.
- Harold L. Israel, Arnold Ostrow, Sarcoidosis and aspergilloma, The American Journal of Medicine, Volume 47, Issue 2, 1969, Pages 243-250, ISSN 0002-9343, [https://doi.org/10.1016/0002-9343\(69\)90150-8](https://doi.org/10.1016/0002-9343(69)90150-8).
- UpToDate: Clinical manifestations and diagnosis of chronic pulmonary aspergillosis
- UpToDate: Diagnosis of pulmonary tuberculosis in adults