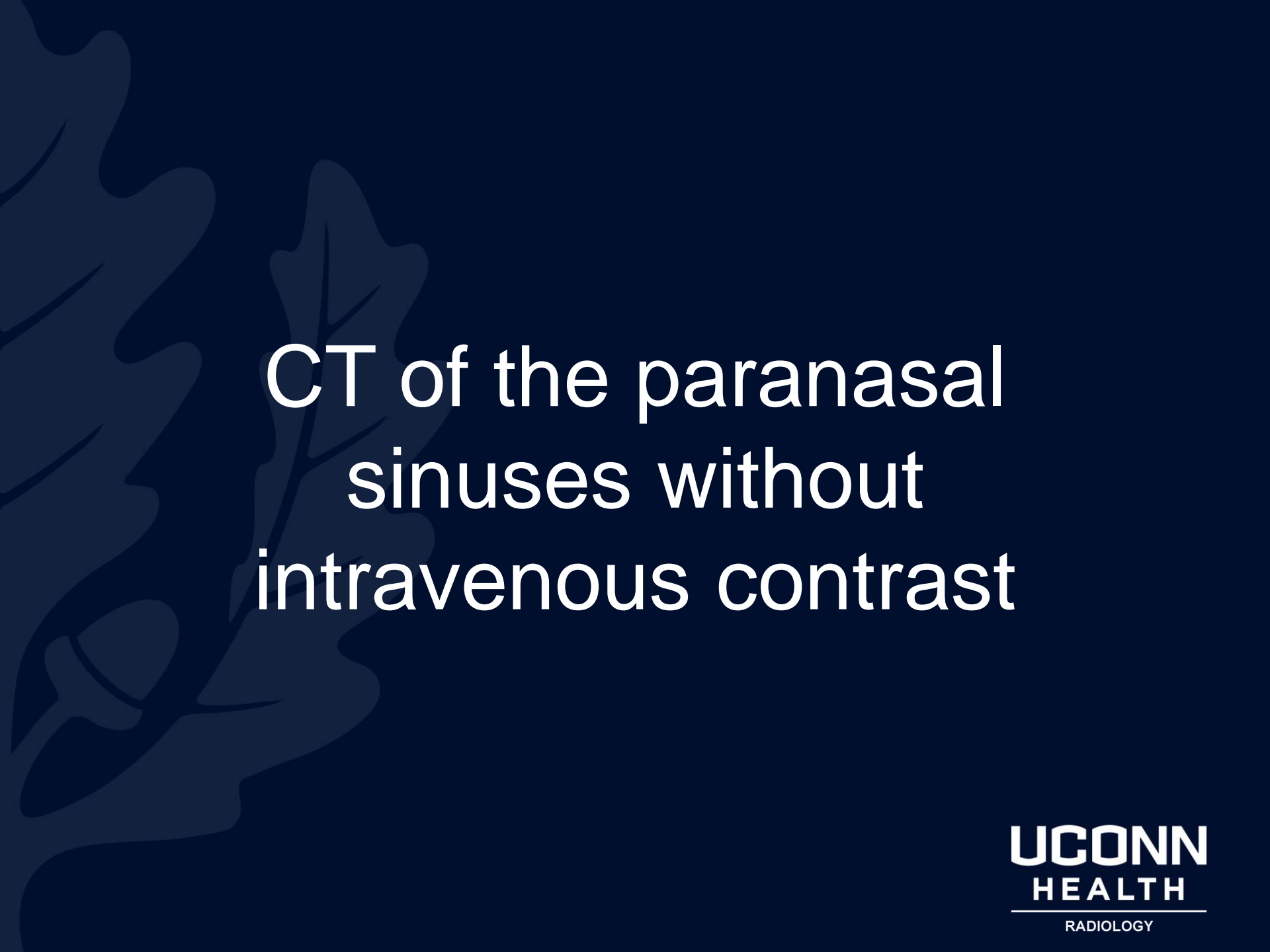
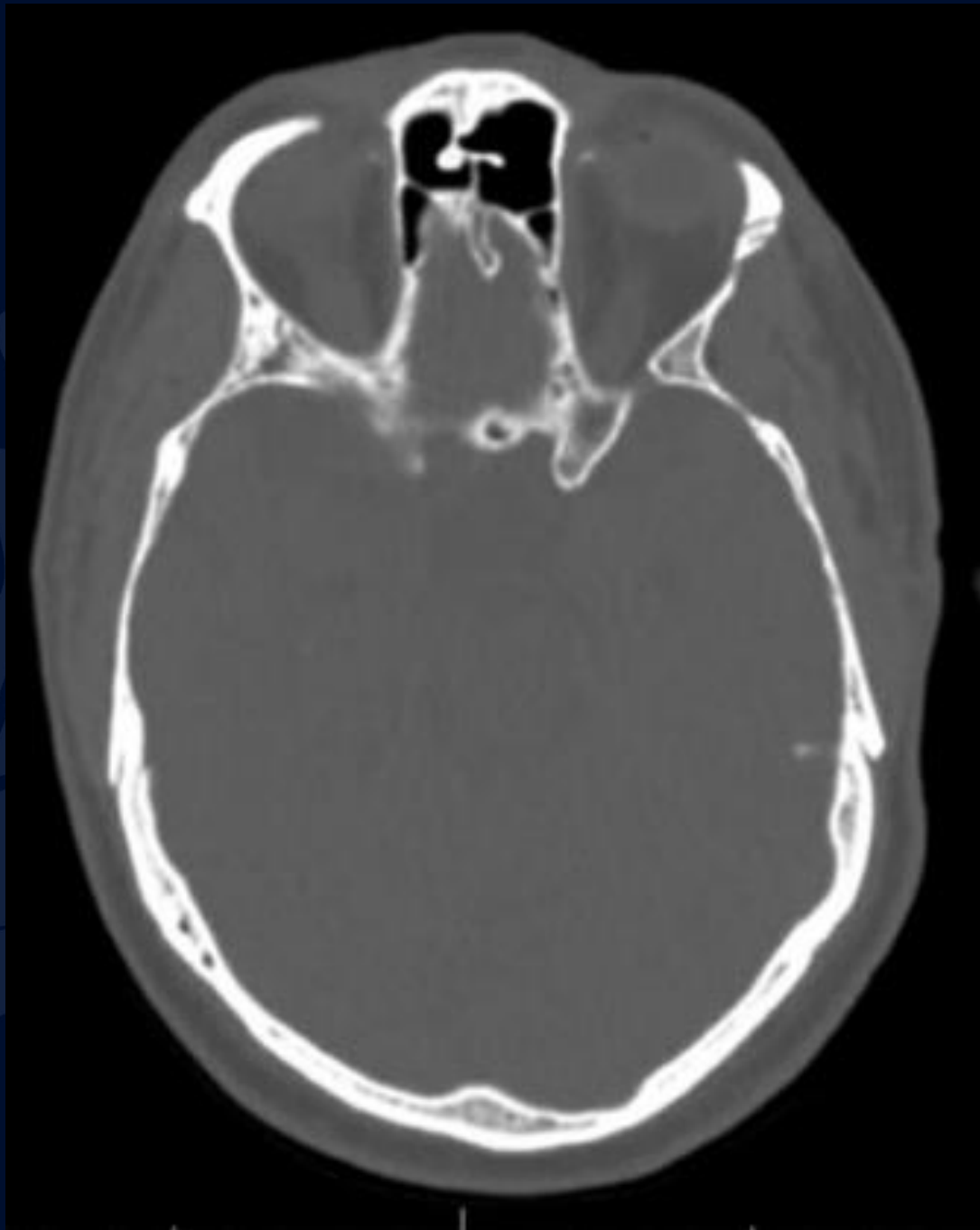


69-year-old male with chronic sinusitis, right-sided facial pain, allergic rhinitis

Joseph Ryan, MD, PhD
Michael Baldwin, MD



CT of the paranasal sinuses without intravenous contrast









UConn
HEALTH

RADIOLOGY

A large, stylized oak leaf graphic in a dark blue color, positioned on the left side of the slide.

?

(incidental finding)

Trochlear apparatus calcifications

Calcification of the trochlear apparatus

Calcification of the trochlear apparatus



Calcification of the trochlear apparatus

Calcification of the trochlear apparatus



Background

- Trochlear apparatus calcification is a common incidental finding on head CT (estimated 13% incidence)
- Benign calcification of the trochlear apparatus; asymptomatic
- Male slightly more common than female
- At least half bilateral
- Possible associations with diabetes, autoimmune diseases, and elevated alkaline phosphatase levels
- Not related to degenerative processes
- Some studies suggest remote orbital trauma as etiology, although appearance of calcifications often many years after trauma
- Should not be mistaken for pathology or foreign body

References

- 1) <https://radiopaedia.org/articles/trochlear-apparatus-calcification>
- 2) Ko SJ and Kim YJ. Incidence of calcification of the trochlear apparatus in the orbit. *Korean J Ophthalmol.* 2010;24 (1): 1-3.
- 3) Buch K, Nadgir RN, Tannenbaum AD, et al. *Clinical significance of trochlear calcifications in the orbit.* *AJNR Am J Neuroradiol.* 2014 Mar;35(3):573-7.