A large, stylized oak leaf graphic in a dark blue color, positioned on the left side of the slide, partially overlapping the text.

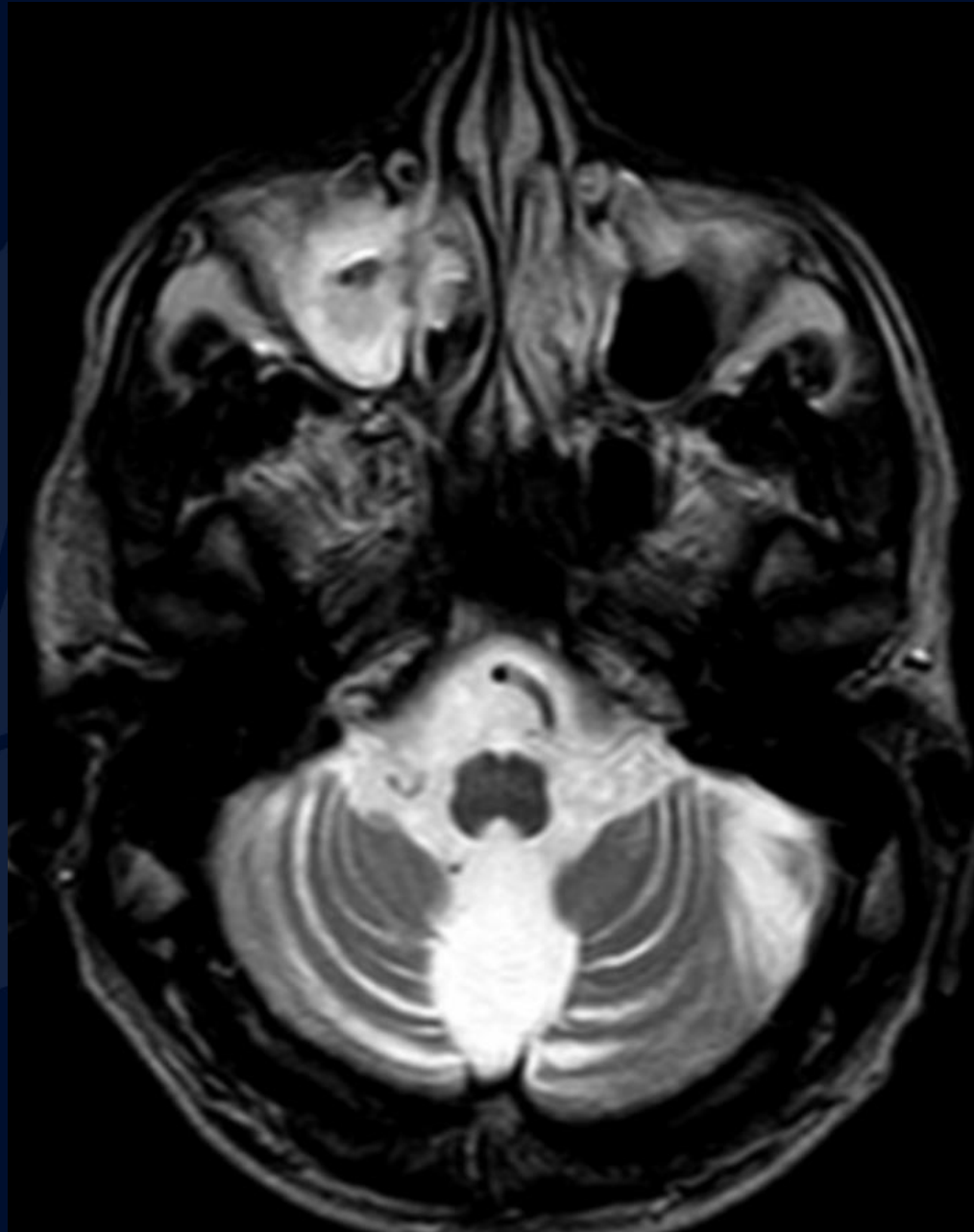
# 56-year-old man with a history of treatment resistant Parkinson's Disease

Seamus Rafferty, MS3

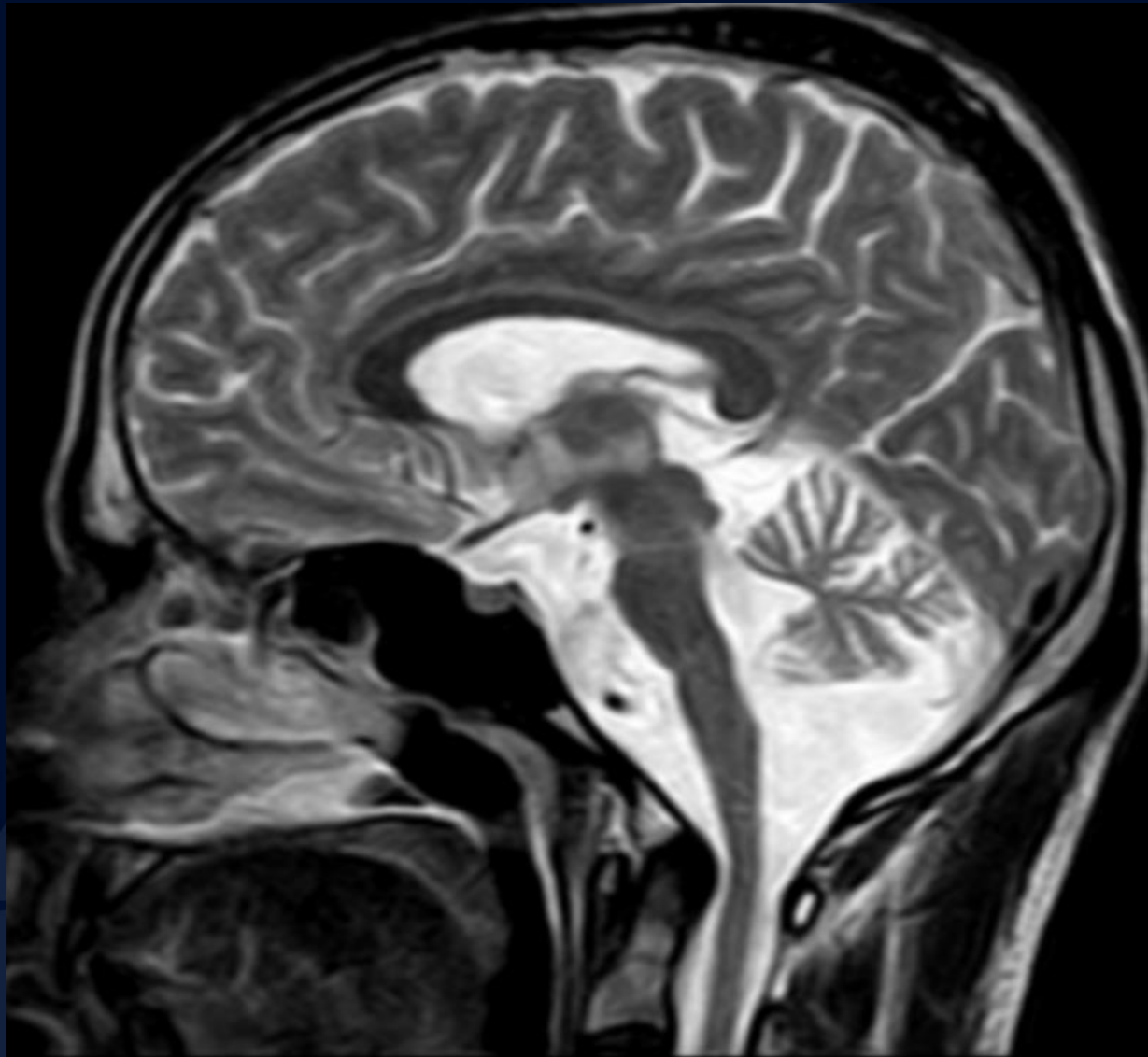
# T2 Axial



# T2 Axial



T2 Axial



A large, stylized oak leaf graphic in a dark blue color, positioned on the left side of the slide. It features detailed vein patterns and a lobed edge.

?

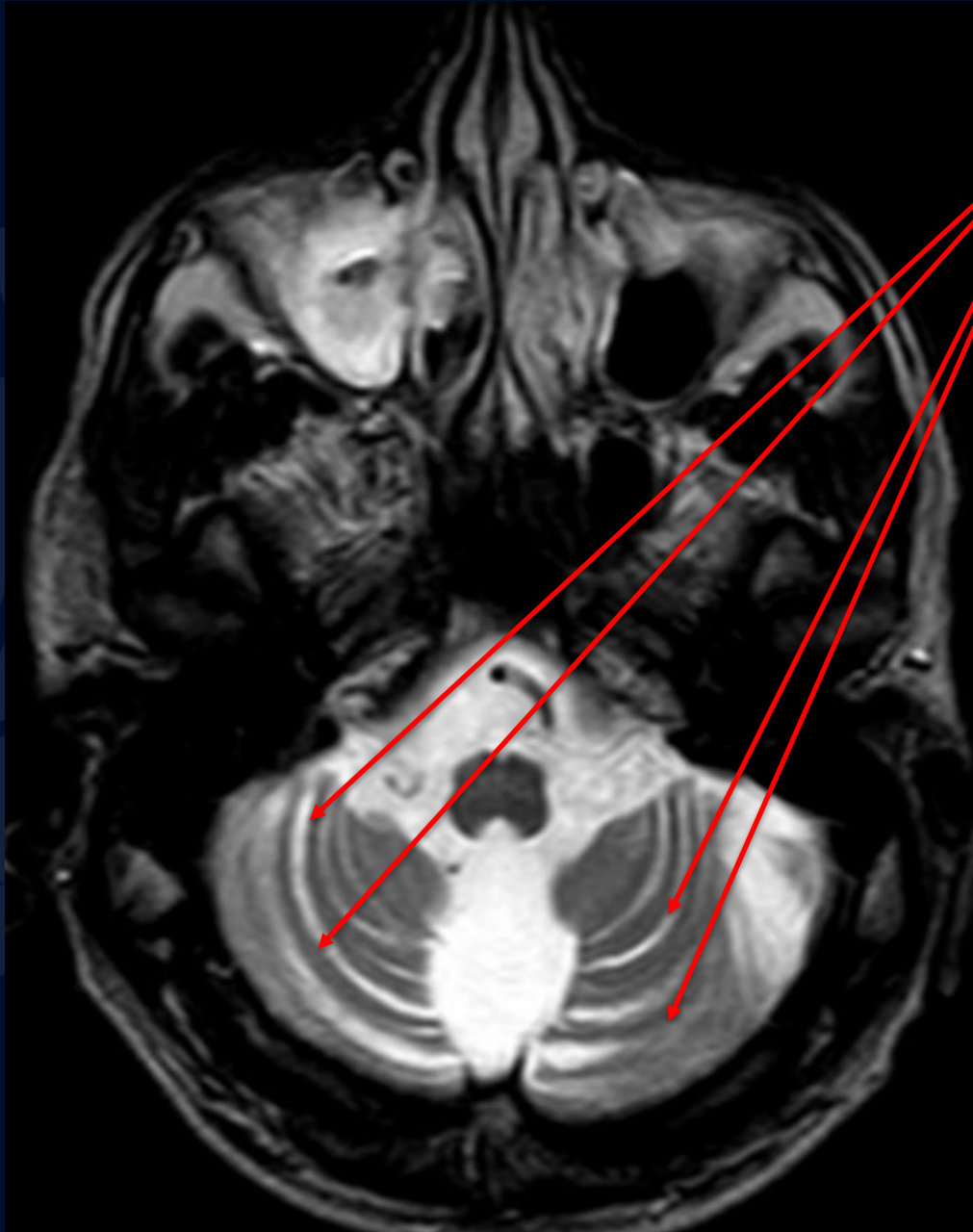
# Multiple System Atrophy (MSA)

# T2 Axial



“Hot cross bun sign”  
+ sign shaped  
T2 hyperintensity

# T2 Axial



Prominent  
cerebellar folia



# T2 Axial



Diffuse  
cerebellar  
atrophy

# Multiple System Atrophy

- Progressive neurodegenerative disease classically presenting with varying combinations of autonomic failure, parkinsonianism, and cerebellar syndrome
- Mean age of onset 55-60 years; prevalence: 4 per 100,000
- Average survival from onset of motor symptoms 8-9 years
- Can be difficult to distinguish from other disorders, particularly in the early stages. DDx:
  - Pure autonomic failure (PAF)
  - Parkinson's Disease
  - Any adult-onset ataxia: alcohol, lead, vitamin E deficiency, spinocerebellar ataxias, fragile-X, late-onset Friedreich ataxia
- Treatment: symptom targeted medical and behavioral modifications / palliative care

# MSA Imaging Findings

- To meet the definition of “clinically established” MSA-p at least one of the following MRI markers is required:
  - Atrophy of:
    - Putamen
    - Middle cerebellar peduncle
    - Pons
    - Cerebellum
  - “Hot cross bun” sign
  - Increased diffusivity of:
    - Putamen
    - Middle cerebellar peduncle

# References

- Wenning GK, Stankovic I, Vignatelli L, Fanciulli A, Calandra-Buonaura G, Seppi K, Palma JA, Meissner WG, Krismer F, Berg D, Cortelli P, Freeman R, Halliday G, Höglinger G, Lang A, Ling H, Litvan I, Low P, Miki Y, Panicker J, Pallecchia MT, Quinn N, Sakakibara R, Stamelou M, Tolosa E, Tsuji S, Warner T, Poewe W, Kaufmann H. The Movement Disorder Society Criteria for the Diagnosis of Multiple System Atrophy. *Mov Disord*. 2022 Jun;37(6):1131-1148. doi: 10.1002/mds.29005. Epub 2022 Apr 21. PMID: 35445419; PMCID: PMC9321158.
- Palma JA, Norcliffe-Kaufmann L, Kaufmann H. Diagnosis of multiple system atrophy. *Auton Neurosci*. 2018 May;211:15-25. doi: 10.1016/j.autneu.2017.10.007. Epub 2017 Oct 23. PMID: 29111419; PMCID: PMC5869112.
- [https://radiopaedia.org/cases/5465/studies/7194?lang=us&source\\_of=https%3A%2F%2Fradiopaedia.org%2Farticles%2Fmultiple-system-atrophy%3Flang%3Dus](https://radiopaedia.org/cases/5465/studies/7194?lang=us&source_of=https%3A%2F%2Fradiopaedia.org%2Farticles%2Fmultiple-system-atrophy%3Flang%3Dus)