A large, stylized oak leaf graphic in a dark blue color, positioned on the left side of the slide, partially overlapping the text.

77-year-old male with 1-week history of worsening abdominal pain

Sarthak Bothra, MS3

AP Radiograph



Non-contrast CT



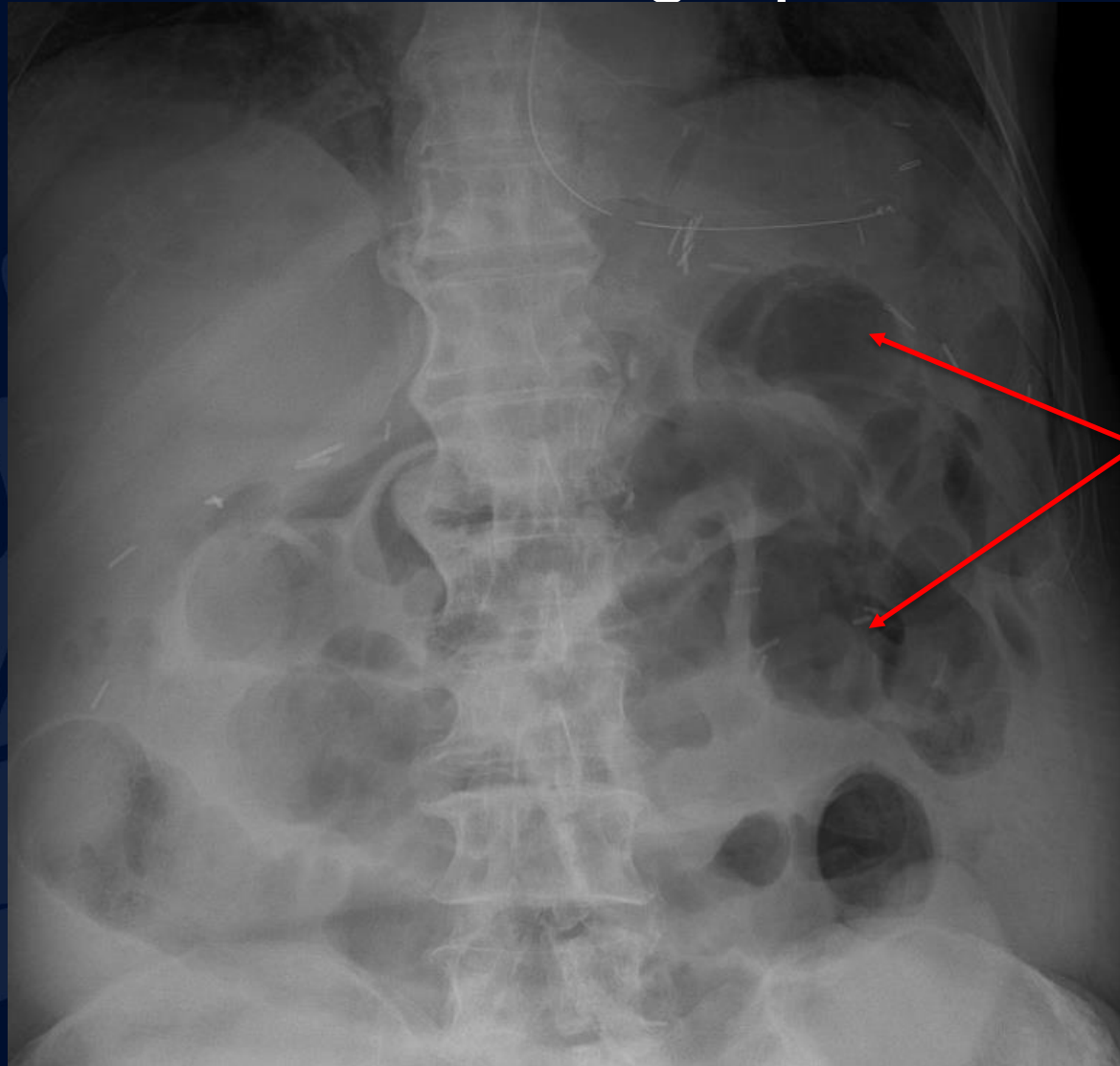
A large, stylized oak leaf graphic in a dark blue color, positioned on the left side of the slide. It features detailed vein patterns and a lobed edge.

?

A large, stylized oak leaf graphic in a dark blue color, positioned on the left side of the slide, partially overlapping the title text.

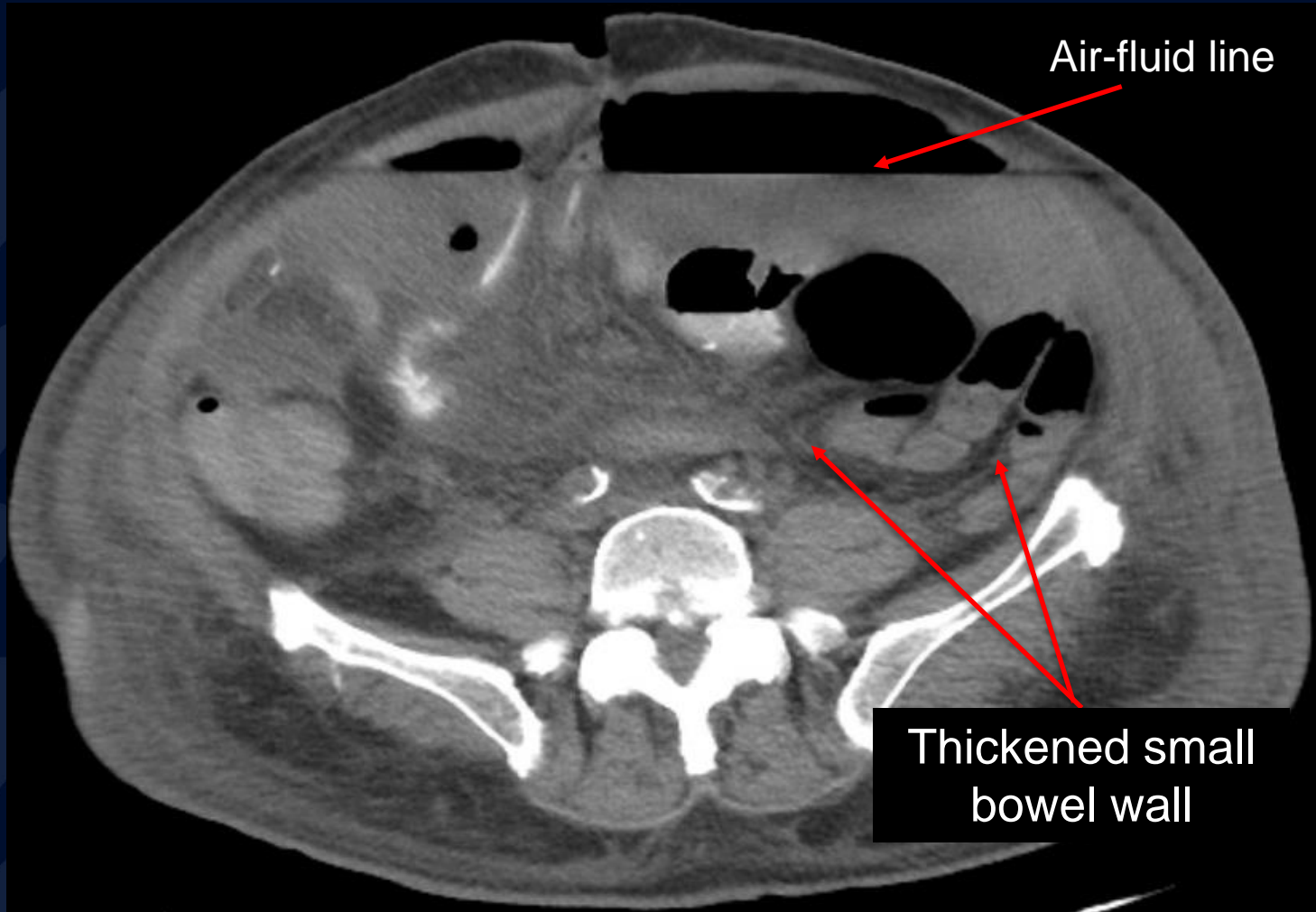
Small Bowel Obstruction

AP Radiograph



Dilated
loops of
small bowel

Non-contrast CT



Small Bowel Obstruction

Partial or complete blockage of the small intestine

Differential

- Paralytic ileus
- Bowel perforation
- Mesenteric ischemia

Causes

- Bowel adhesions
- Incarcerated hernia
- Meckel Diverticulum
- Strictures (Crohn disease)
- Intraabdominal masses or tumors
- Gallstone Ileus

Imaging: Radiographs and CT imaging

- Air-fluid levels
- Thickened bowel walls
- Distended loops of bowel > 3 cm

References

- Griffiths S, Glancy DG. Intestinal obstruction. *Surgery.* ; 35(3): p.3. doi: 10.1016/j.mpsur.2016.12.005.
- Jackson P, Vigiola Cruz M. Intestinal Obstruction: Evaluation and Management. *Am Fam Physician.* 2018; 98(6): p.362-367. pmid: 30215917.
- Jaffe T, Thompson WM. Large-Bowel Obstruction in the Adult: Classic Radiographic and CT Findings, Etiology, and Mimics. *Radiology.* 2015; 275(3): p.651-663. doi: 10.1148/radiol.2015140916.
- Batke, Cappell. Adynamic Ileus and Acute Colonic Pseudo-Obstruction. *The Medical Clinics of North America.* ; 92: p.649–670. doi: 10.1016/j.mcna.2008.01.002.
- Nobie BA, Talavera F. Small-Bowel Obstruction. In: Dronen SC *Small-Bowel Obstruction.* New York, NY: WebMD.
<http://emedicine.medscape.com/article/774140-overview>