

44-year-old female with
complicated psychiatric history
presenting with suicide ideation
and altered mental status

Patrick Bogui, MS3

Radiograph



Radiograph

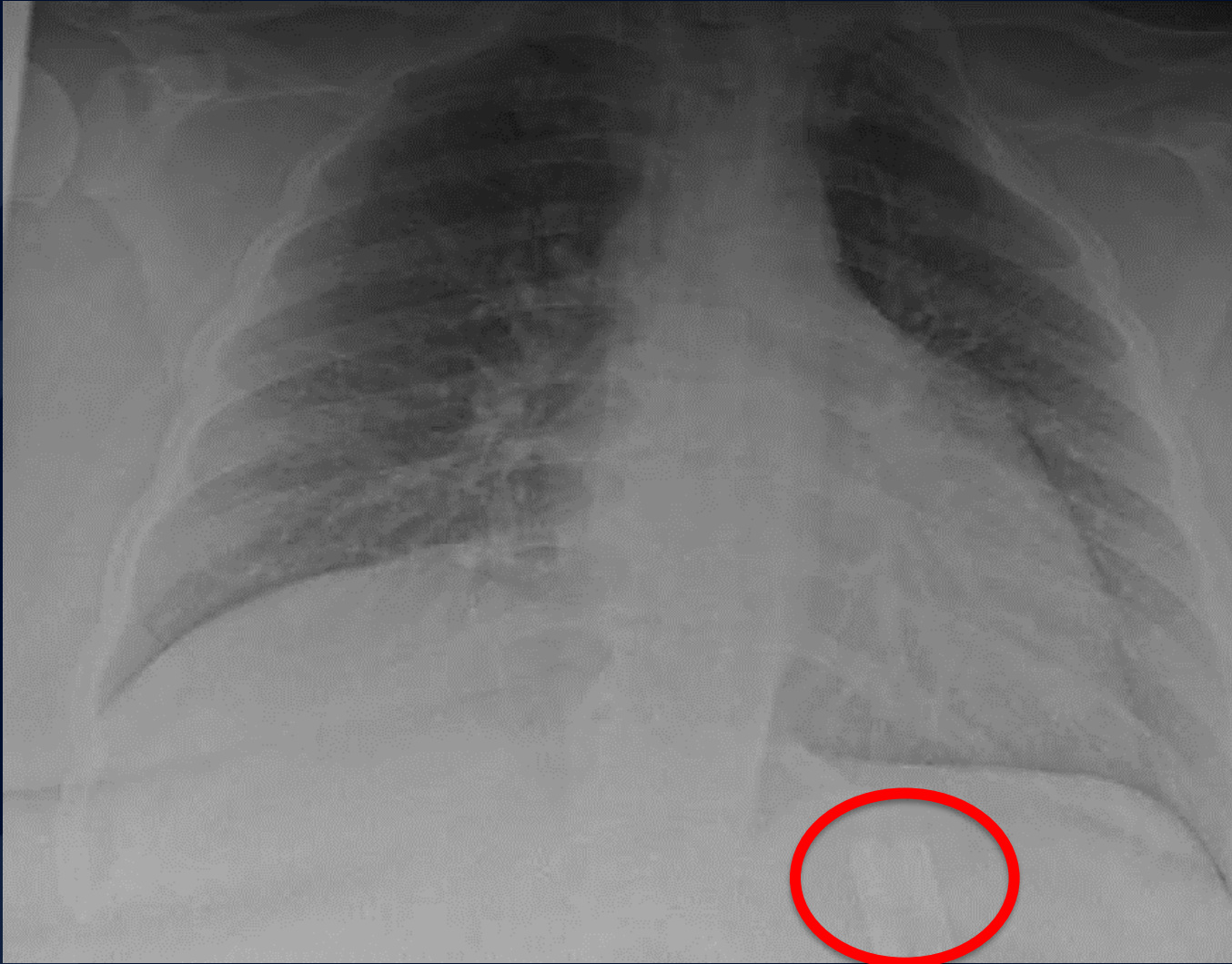


A large, stylized oak leaf graphic in a dark blue color, positioned on the left side of the slide. The leaf has a prominent central vein and several smaller veins branching off it. The leaf's edge is serrated.

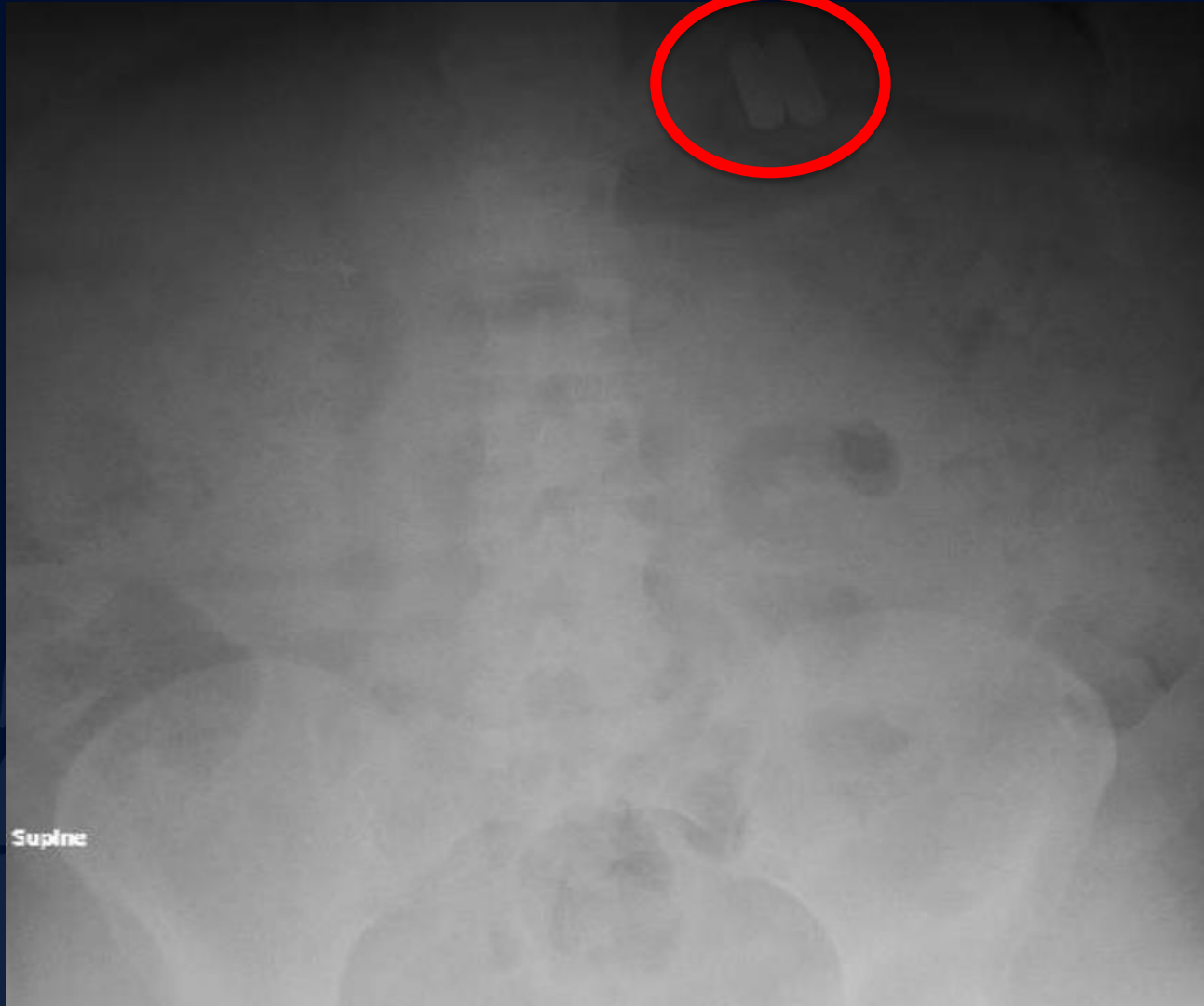
?

Foreign Body Ingestion (Polyembolokoilamania)

Radiograph



Radiograph



Foreign Body Ingestion

- **Polyembolokoilamania** is the act of inserting foreign bodies into orifices such as the rectum and vagina (4). These can lead to dangerous outcomes, such as toxic shock syndrome, internal bleeding, and necrosis.
- When a patient has ingested an unknown foreign body, ultrasound/radiographs are first line for imaging. CT scans are used for further assessment. MRIs are avoided, as the presence of metal in the foreign body (as in this patient) is highly contraindicated.

References

- Bains N, Abdijadid S. Major Depressive Disorder. [Updated 2022 Jun 1]. In: StatPearls [Internet]. Treasure Island (FL): StatPearls Publishing; 2023 Jan-. Available from: <https://www.ncbi.nlm.nih.gov/books/NBK559078/>
- Modhurima Moitra, Damian Santomauro, Louisa Degenhardt, Pamela Y. Collins, Harvey Whiteford, Theo Vos, Alize Ferrari, Estimating the risk of suicide associated with mental disorders: A systematic review and meta-regression analysis, Journal of Psychiatric Research, Volume 137, 2021, Pages 242-249, ISSN 0022-3956, <https://doi.org/10.1016/j.jpsychires.2021.02.053>.
(<https://www.sciencedirect.com/science/article/pii/S002239562100131X>)
- Uyemura MC. Foreign body ingestion in children. Am Fam Physician. 2005 Jul 15;72(2):287-91. Erratum in: Am Fam Physician. 2006 Apr 15;73(8):1332. PMID: 16050452.
- Unruh BT, Nejad SH, Stern TW, Stern TA. Insertion of foreign bodies (polyembolokoilamania): underpinnings and management strategies. Prim Care Companion CNS Disord. 2012;14(1):PCC.11f01192. doi: 10.4088/PCC.11f01192. Epub 2012 Feb 16. PMID: 22690353; PMCID: PMC3357565.
- Al Nasser Y, Muco E, Alsaad AJ. Pica. [Updated 2022 Nov 17]. In: StatPearls [Internet]. Treasure Island (FL): StatPearls Publishing; 2023 Jan-. Available from: <https://www.ncbi.nlm.nih.gov/books/NBK532242/>