

59-year-old female with fever, dyspnea, and generalized weakness

Jeska Guirguis, MS3

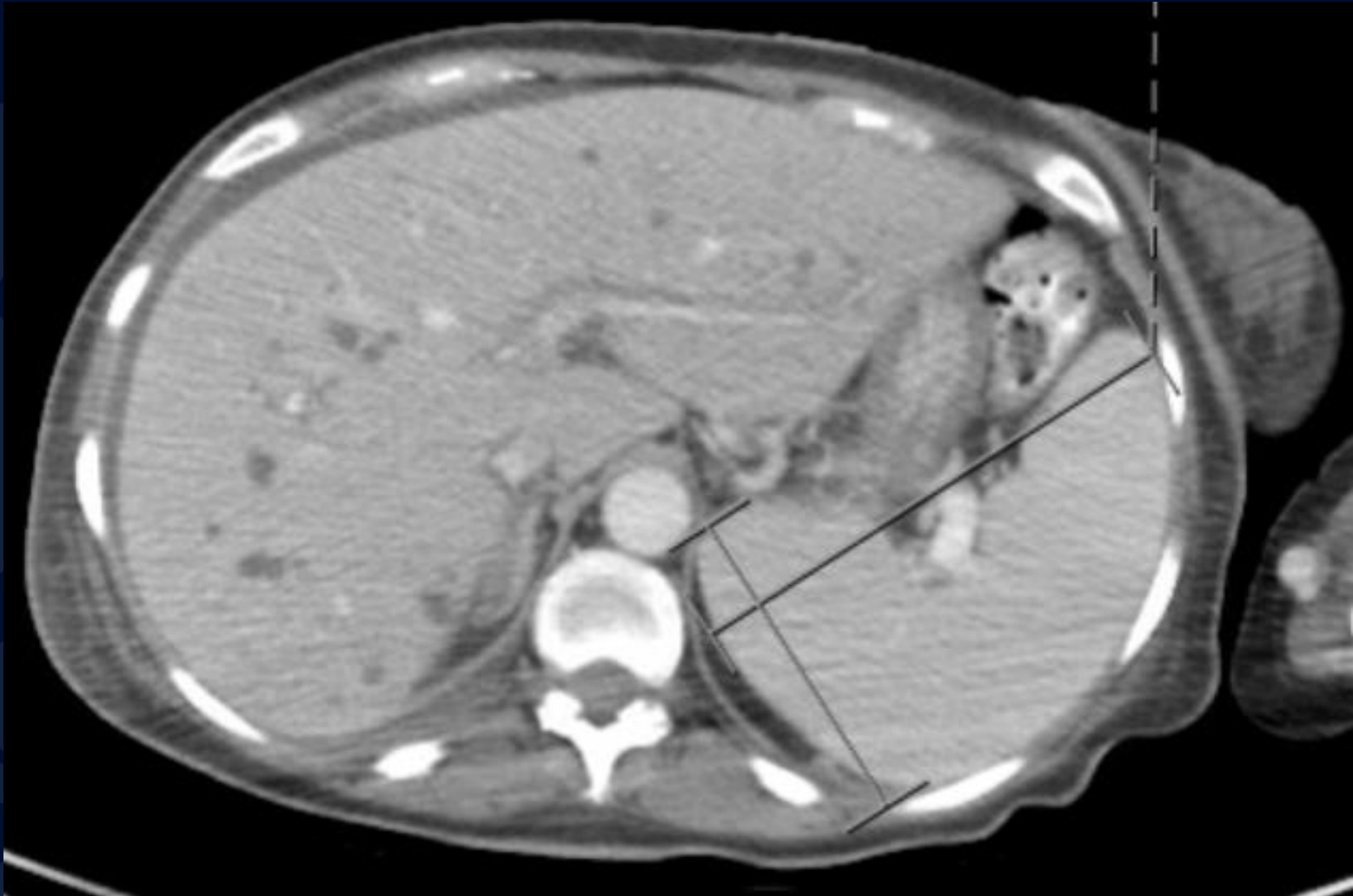
Radiograph on Admission



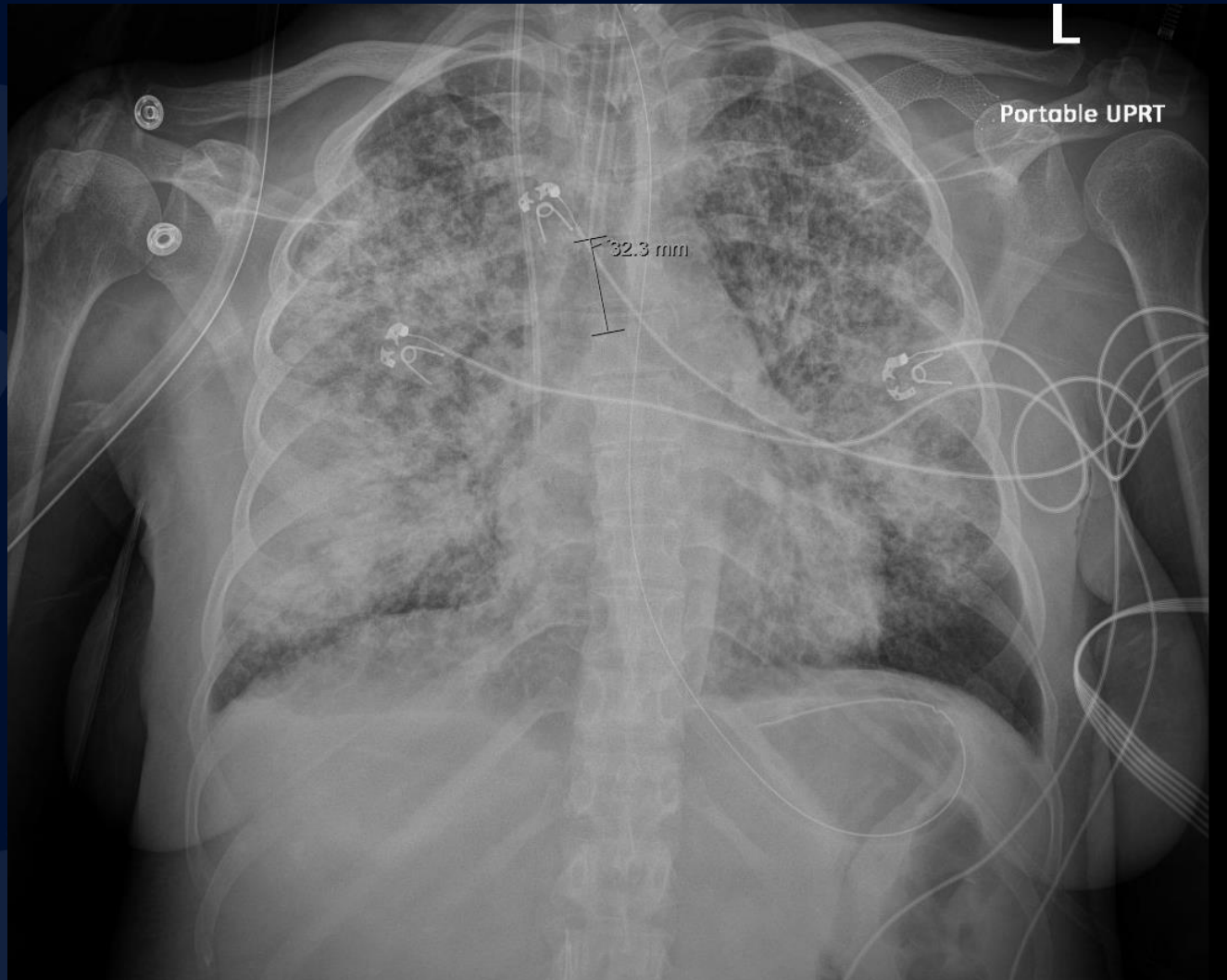
CT IV Contrast on Admission



CT IV Contrast on Admission



Radiograph Hospital Day #8

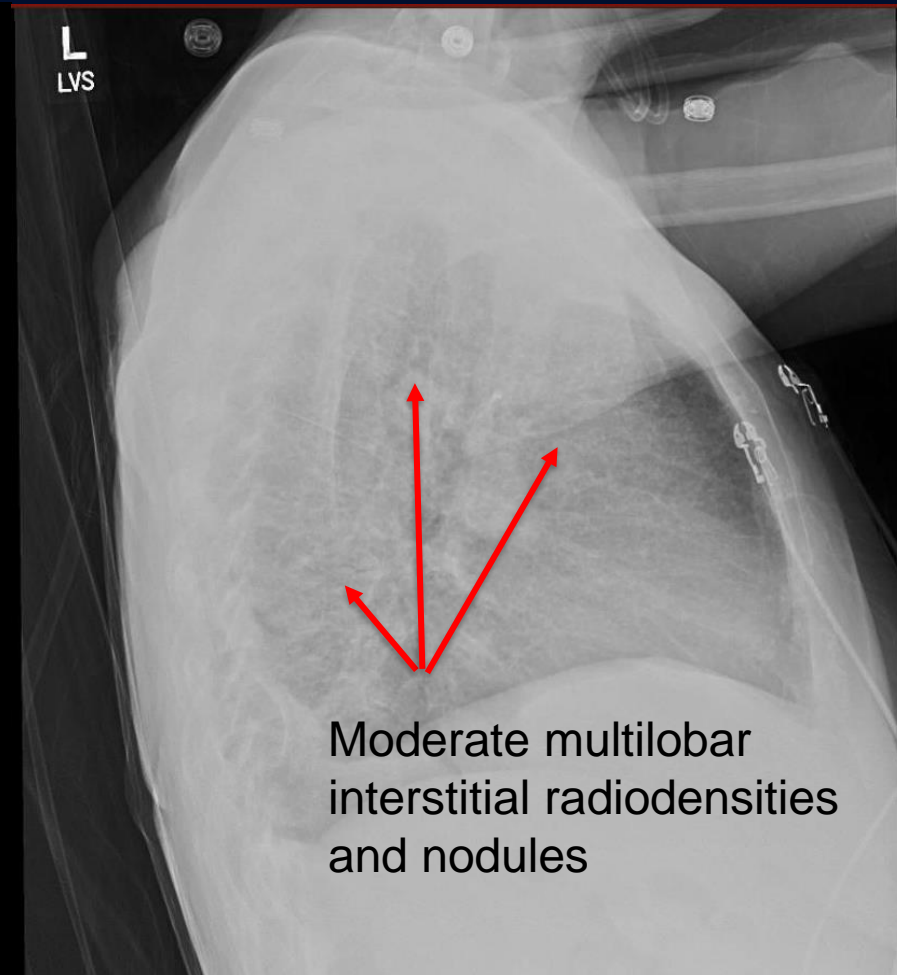
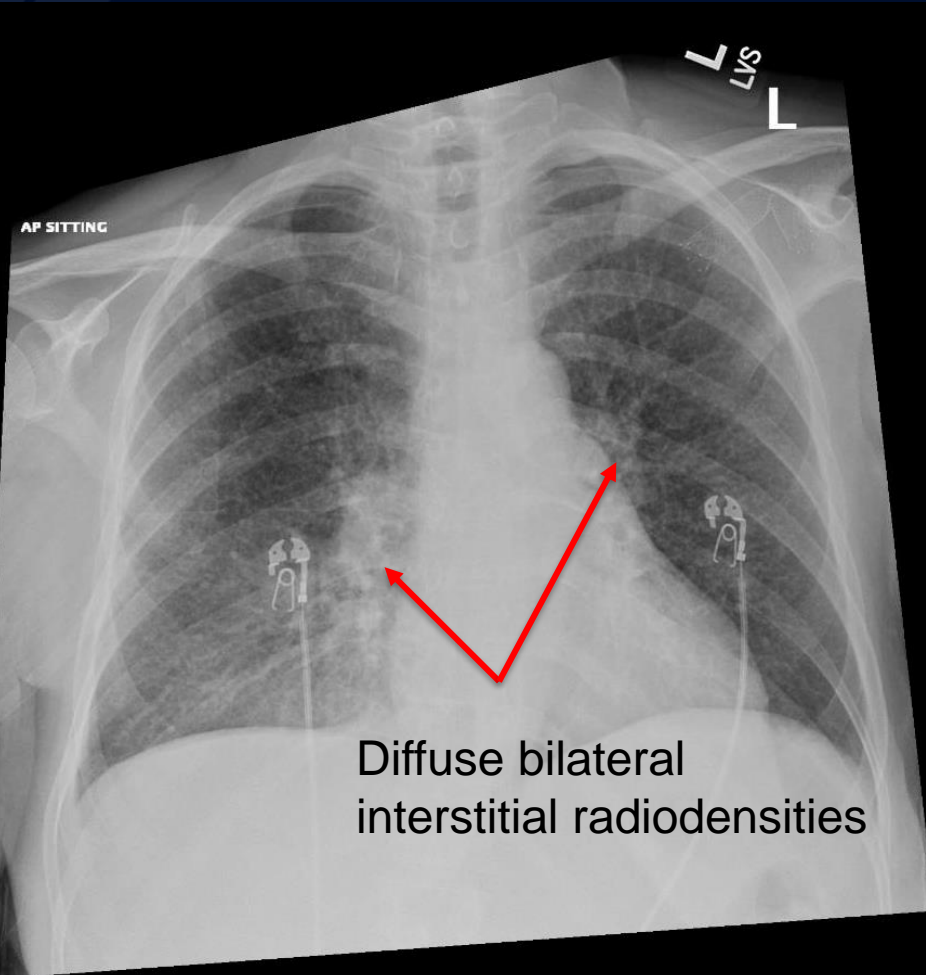


A large, stylized oak leaf graphic in a dark blue color, positioned on the left side of the slide. It features detailed vein patterns and a lobed edge.

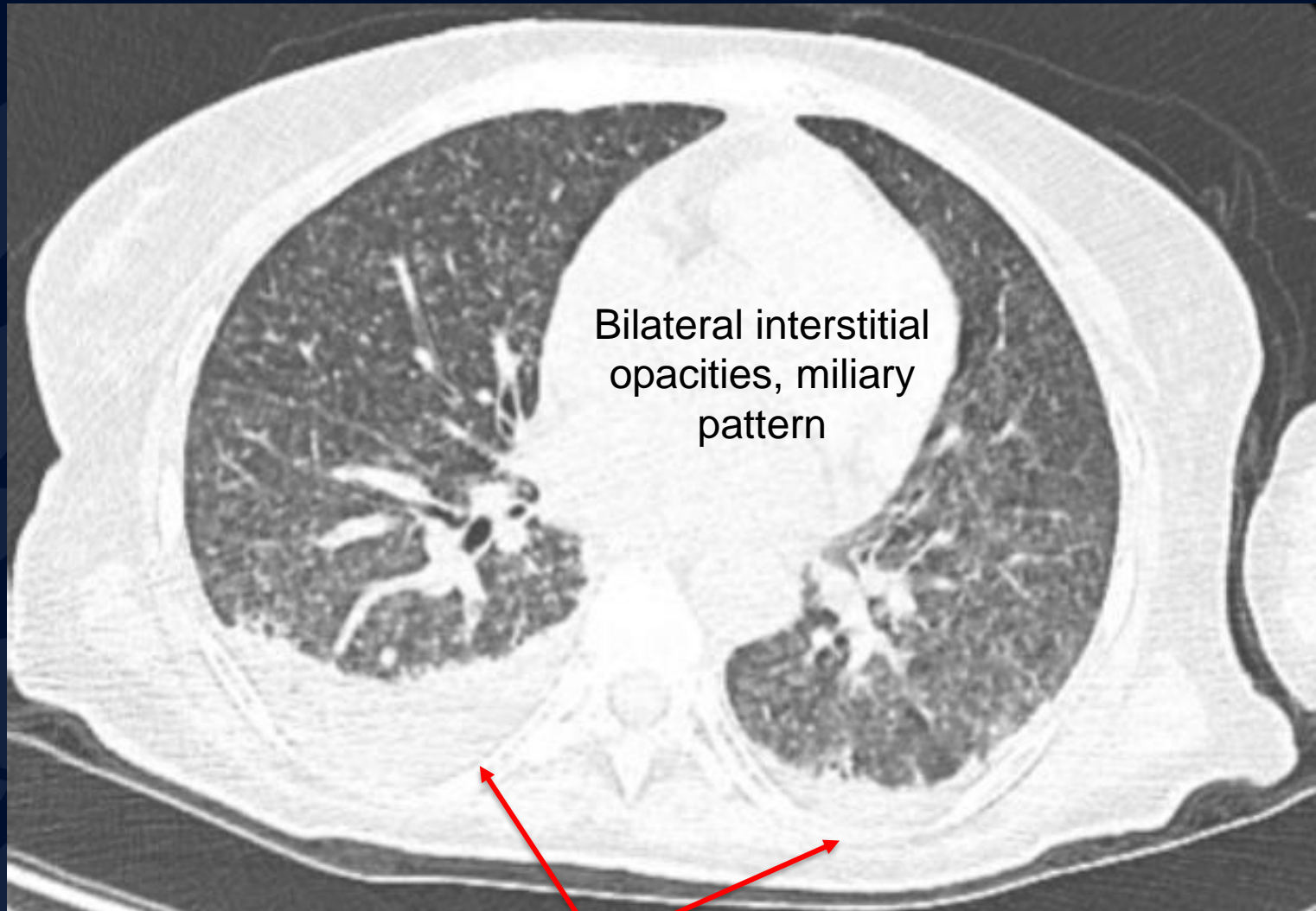
?

Histoplasmosis-Associated Hemophagocytic Lymphohistiocytosis

Radiograph on Admission



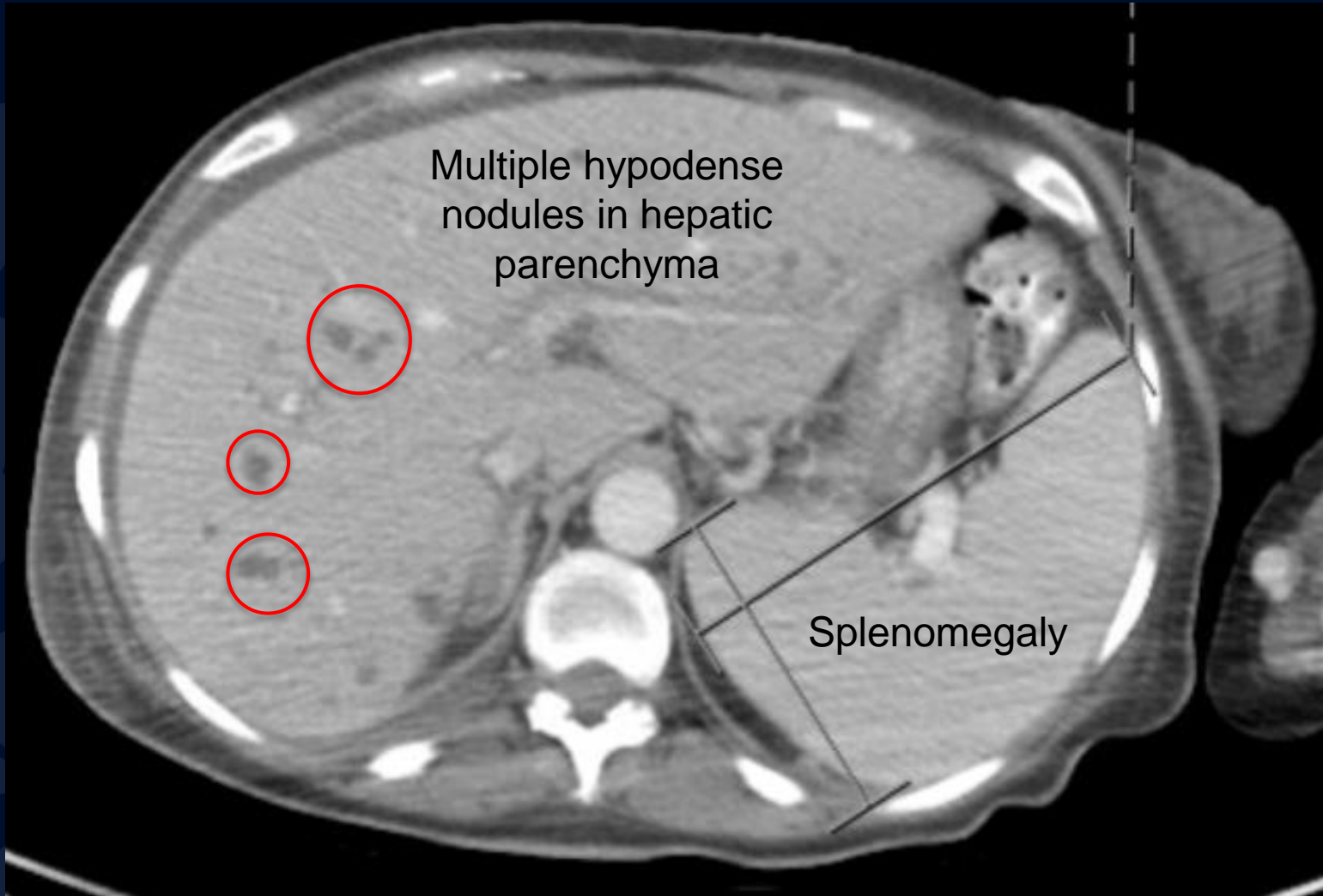
CT IV Contrast on Admission



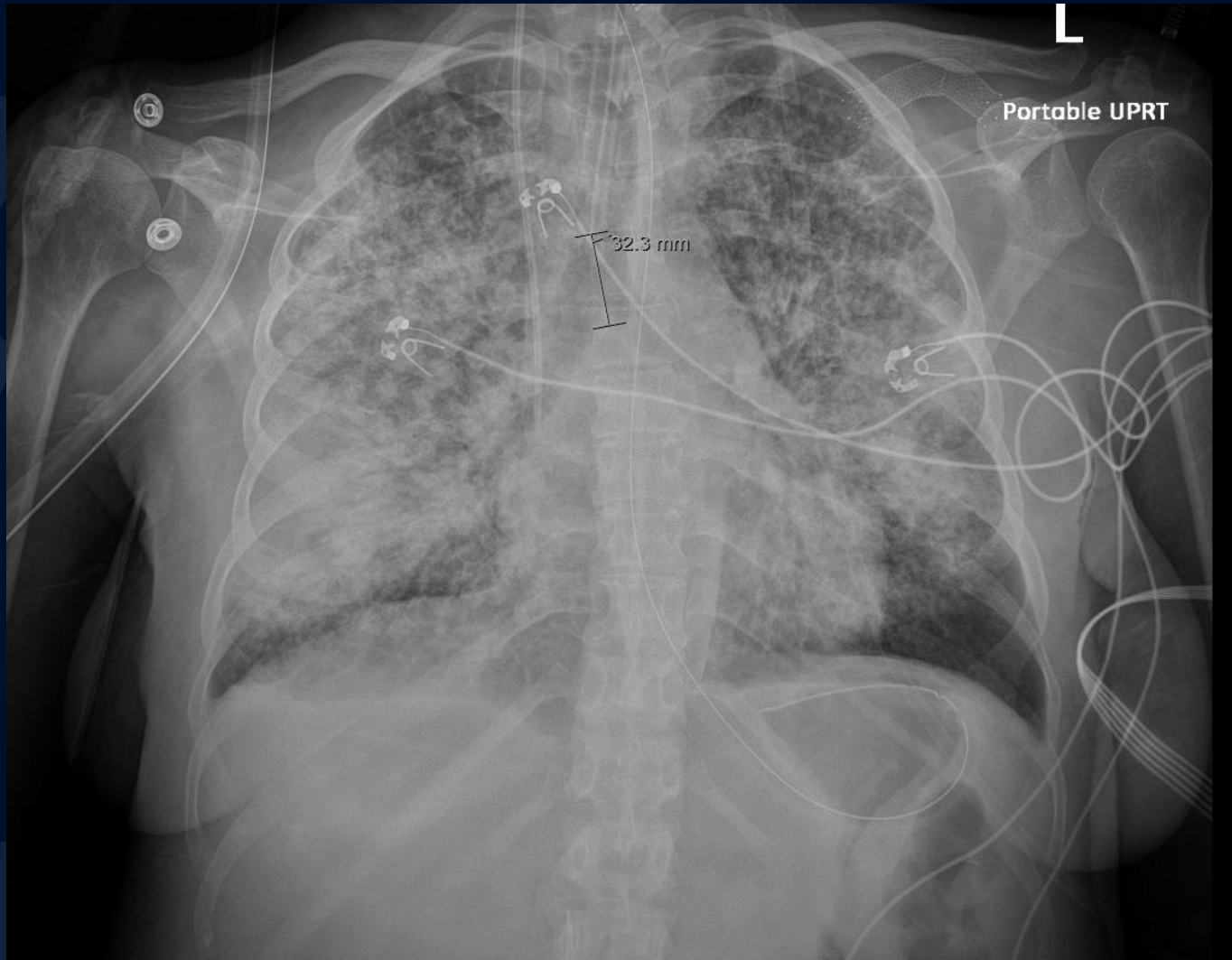
Bilateral interstitial
opacities, miliary
pattern

Bilateral pleural effusions

CT IV Contrast on Admission



Radiograph Hospital Day #8



Significantly increased bilateral
interstitial & alveolar infiltrates

Histoplasmosis-Associated Hemophagocytic Lymphohistiocytosis

- Histoplasma-associated hemophagocytic lymphohistiocytosis is a rare but severe complication of histoplasmosis.
 - Characterized by an overactivation of the immune system, leading to organ damage, cytopenias, and hyperferritinemia.
- Radiological findings such as bilateral alveolar-interstitial opacities with pleural effusions, hepatosplenomegaly, and brain abnormalities can help to raise clinical suspicion of the diagnosis.
- Treatment involves aggressive antifungal therapy and management of the underlying HLH.
- Overall, histoplasma-associated HLH is a rare but important diagnosis to consider in immunosuppressed patients who present with systemic symptoms and organ dysfunction.

Imaging Findings

Most radiographic features of HLH are non-specific:

- Chest radiographs show findings suggesting pulmonary edema or infection in up to 50% of patients
- Chest CT
 - Centrilobular nodules
 - Consolidation
 - Ground-glass opacities
 - Mediastinal lymphadenopathy.
- Abdominal radiographs
 - Hepatosplenomegaly
 - Gallbladder wall thickening
 - Ascites
- Brain imaging
 - Non-specific periventricular white-matter abnormalities
 - Brain-volume loss
 - Enlargement of extra-axial fluid spaces
 - Orbital myopathy

For thoracic histoplasmosis, chest radiograph may be normal though could demonstrate:

- Histoplasmosis- well-defined nodules with central calcification; Pathognomonic "target lesion"
- Acute histoplasmosis
 - Airspace shadowing with consolidation in multiple lung segments or lobes, similar to bacterial pneumonia



References

- Tefferi A, & Longo D.L. (2018). Less common hematologic malignancies. Jameson J, & Fauci A.S., & Kasper D.L., & Hauser S.L., & Longo D.L., & Loscalzo J(Eds.), *Harrison's Principles of Internal Medicine, 20e*. McGraw Hill. <https://accessmedicine-mhmedical-com.online.uchc.edu/content.aspx?bookid=2129§ionid=192018146>
- Radiopaedia. (n.d.). Haemophagocytic lymphohistiocytosis. Retrieved April 1, 2023, from <https://radiopaedia.org/articles/haemophagocytic-lymphohistiocytosis?lang=us>
- Radiopaedia. (n.d.). Thoracic histoplasmosis. Retrieved April 1, 2023, from <https://radiopaedia.org/articles/thoracic-histoplasmosis-1?lang=us>
- Meno, M. (2022). Clinical features and diagnosis of hemophagocytic lymphohistiocytosis. UpToDate. Retrieved April 1, 2023, from https://www.uptodate.com/contents/clinical-features-and-diagnosis-of-hemophagocytic-lymphohistiocytosis?search=hlh&source=search_result&selectedTitle=1~150&usage_type=default&display_rank=1
- Asghar A, Zahoor M, Hussain I, Khan MA. Hemophagocytic Lymphohistiocytosis (HLH): A Review of Literature. *Cureus*. 2015;7(11):e347. doi:10.7759/cureus.347
- Ismail, A., Lim, K. H., & Tey, J. K. (2021). A case of hemophagocytic lymphohistiocytosis secondary to disseminated histoplasmosis in an immunocompetent host. *Medical Mycology Case Reports*, 31, 46-49. <https://doi.org/10.1016/j.mmcr.2021.02.002>
- Images:
 - <https://ars.els-cdn.com/content/image/1-s2.0-S2772736X2200010X-gr1.jpg>
 - <http://learningradiology.com/radsigns/radsignspages/T-radsigns.htm>