

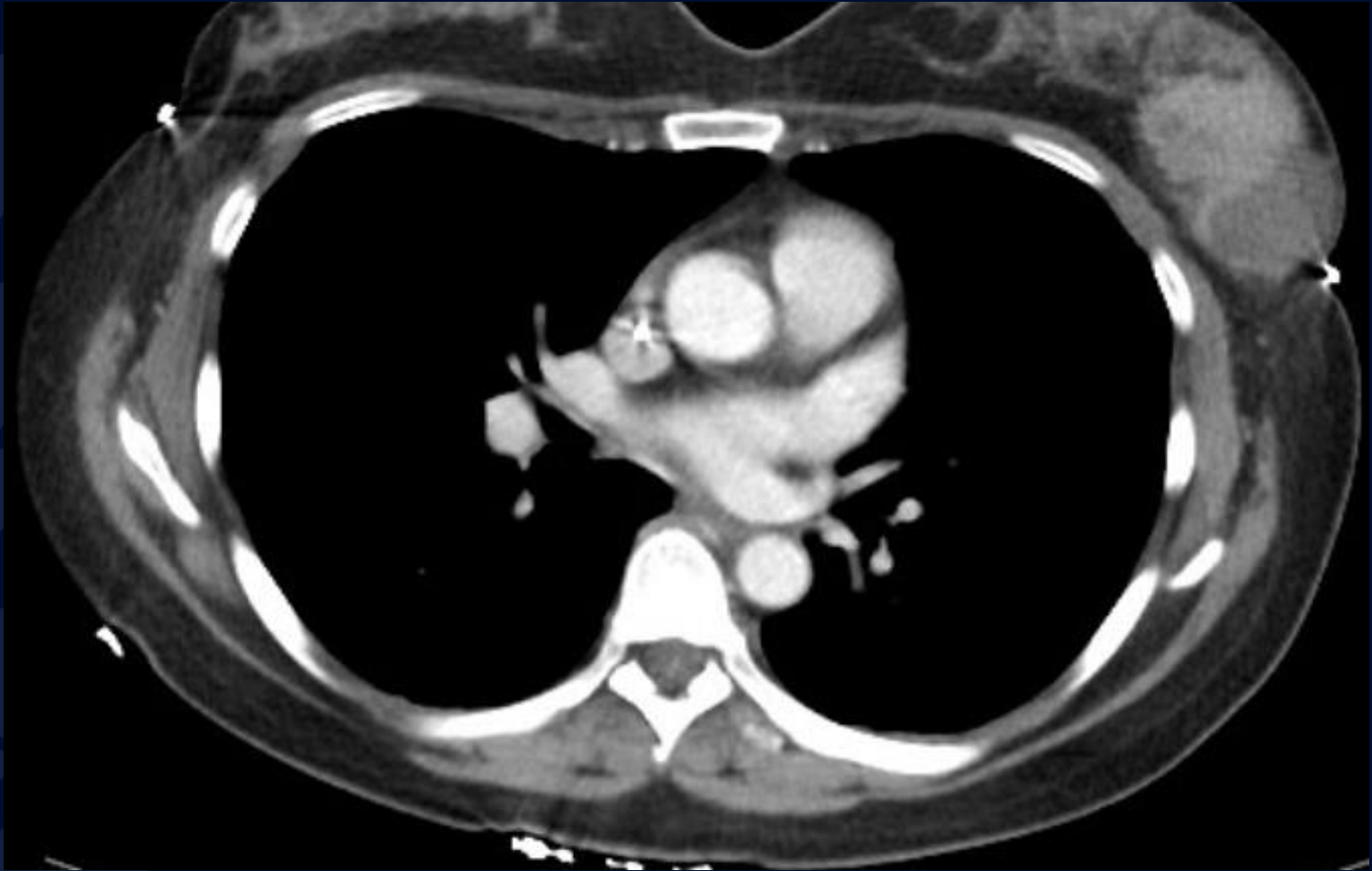
50-year-old female with palpable left breast mass

Zewen Tan, MS3

Breast Ultrasound



Contrast CT



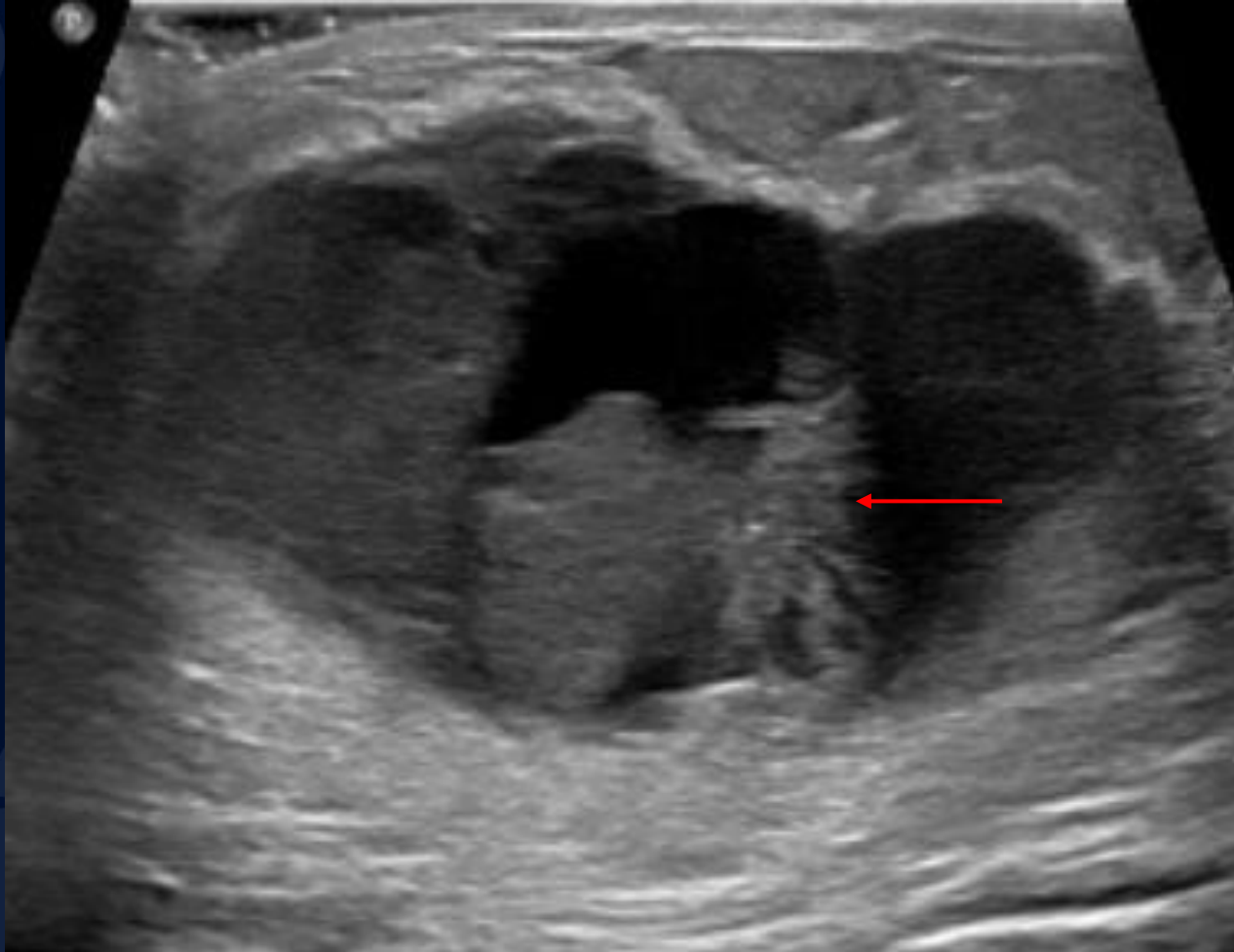
A large, stylized oak leaf graphic in a dark blue color, positioned on the left side of the slide. It features detailed vein patterns and a lobed edge.

?



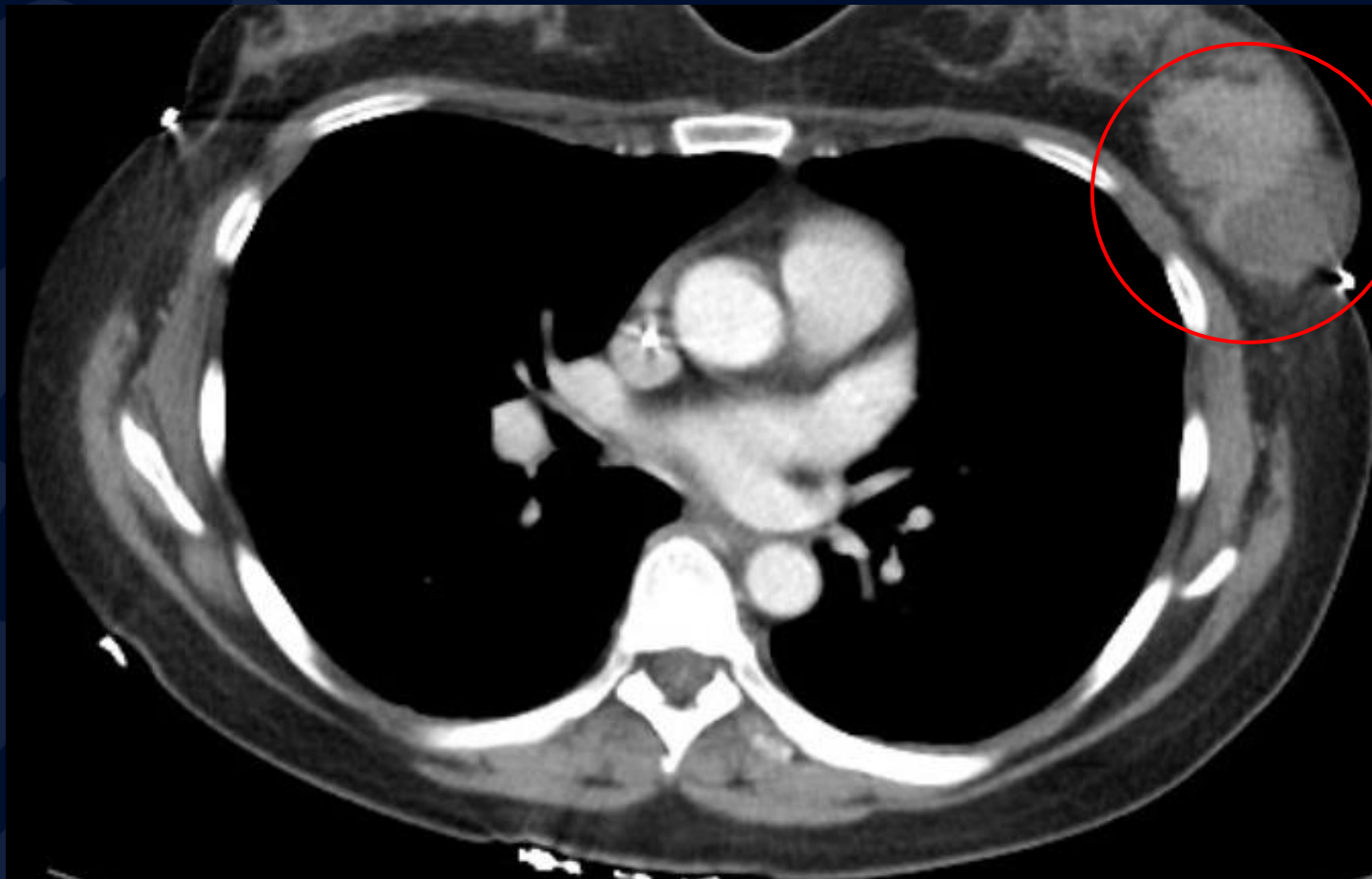
Breast Cancer

Breast Ultrasound



Heterogeneous left breast mass

Contrast CT



Left breast mass

Triple Negative Invasive Ductal Carcinoma

Epidemiology

- ER, PR, HER2 negative: accounts for 10-15% of all breast cancers
- Tend to be more common in women < 40, black, or who have a *BRCA1* mutation

Differential

- invasive ductal carcinoma, invasive lobular carcinoma, hematoma, fat necrosis, angiosarcoma, lymphoma, DCIS

Treatment

- Surgical resection
- Chemotherapy (e.g., cyclophosphamide, doxorubicin, pembrolizumab)
- Radiation therapy

References

- *American Joint Committee on Cancer's Staging System for breast cancer ...* (n.d.). Retrieved April 2, 2023, from <https://pubs.rsna.org/doi/abs/10.1148/rg.2018180056>
- Emens, L. A., Adams, S., Cimino-Mathews, A., Disis, M. L., Gatti-Mays, M. E., Ho, A. Y., Kalinsky, K., McArthur, H. L., Mittendorf, E. A., Nanda, R., Page, D. B., Rugo, H. S., Rubin, K. M., Soliman, H., Spears, P. A., Tolaney, S. M., & Litton, J. K. (2021, August). *Society for immunotherapy of cancer (SITC) clinical practice guideline on immunotherapy for the treatment of breast cancer*. *Journal for immunotherapy of cancer*. Retrieved April 2, 2023, from <https://www.ncbi.nlm.nih.gov/pmc/articles/PMC8365813/>
- Hammond ME;Hayes DF;Dowsett M;Allred DC;Hagerty KL;Badve S;Fitzgibbons PL;Francis G;Goldstein NS;Hayes M;Hicks DG;Lester S;Love R;Mangu PB;McShane L;Miller K;Osborne CK;Paik S;Perlmutter J;Rhodes A;Sasano H;Schwartz JN;Sweep FC;Taube S;Torlakovic EE;Valen. (n.d.). *American Society of Clinical Oncology/COLLEGE OF AMERICAN PATHOLOGISTS guideline recommendations for immunohistochemical testing of estrogen and progesterone receptors in breast cancer (unabridged version)*. *Archives of pathology & laboratory medicine*. Retrieved April 2, 2023, from <https://pubmed.ncbi.nlm.nih.gov/20586616/>
- Yap, J. (2022, August 13). *Breast neoplasms: Radiology reference article*. Radiopaedia Blog RSS. Retrieved April 2, 2023, from <https://radiopaedia.org/articles/breast-neoplasms?lang=us>