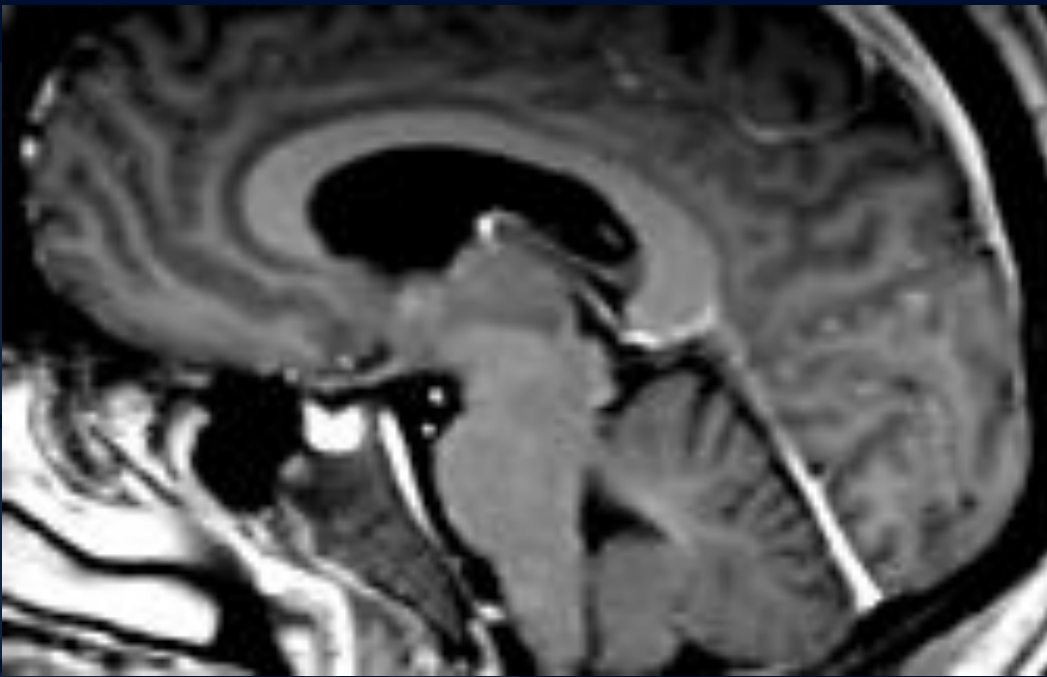


52-year-old female with slurred speech, confusion

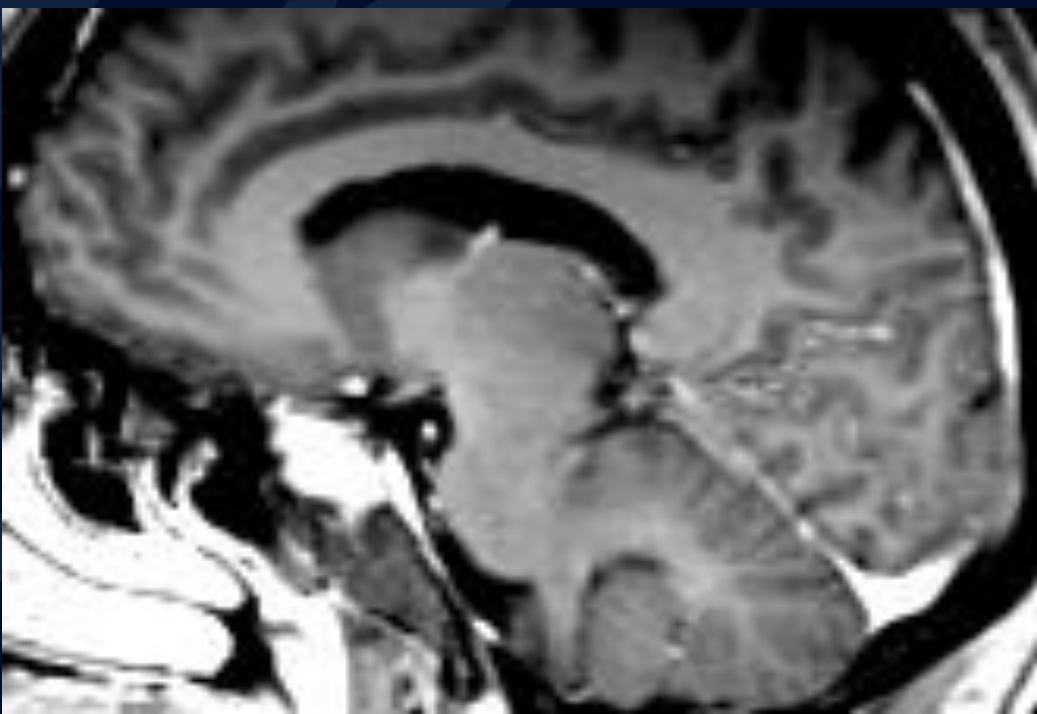
Katherine Dobosh, BS

Leo Wolansky, MD

3/16/20

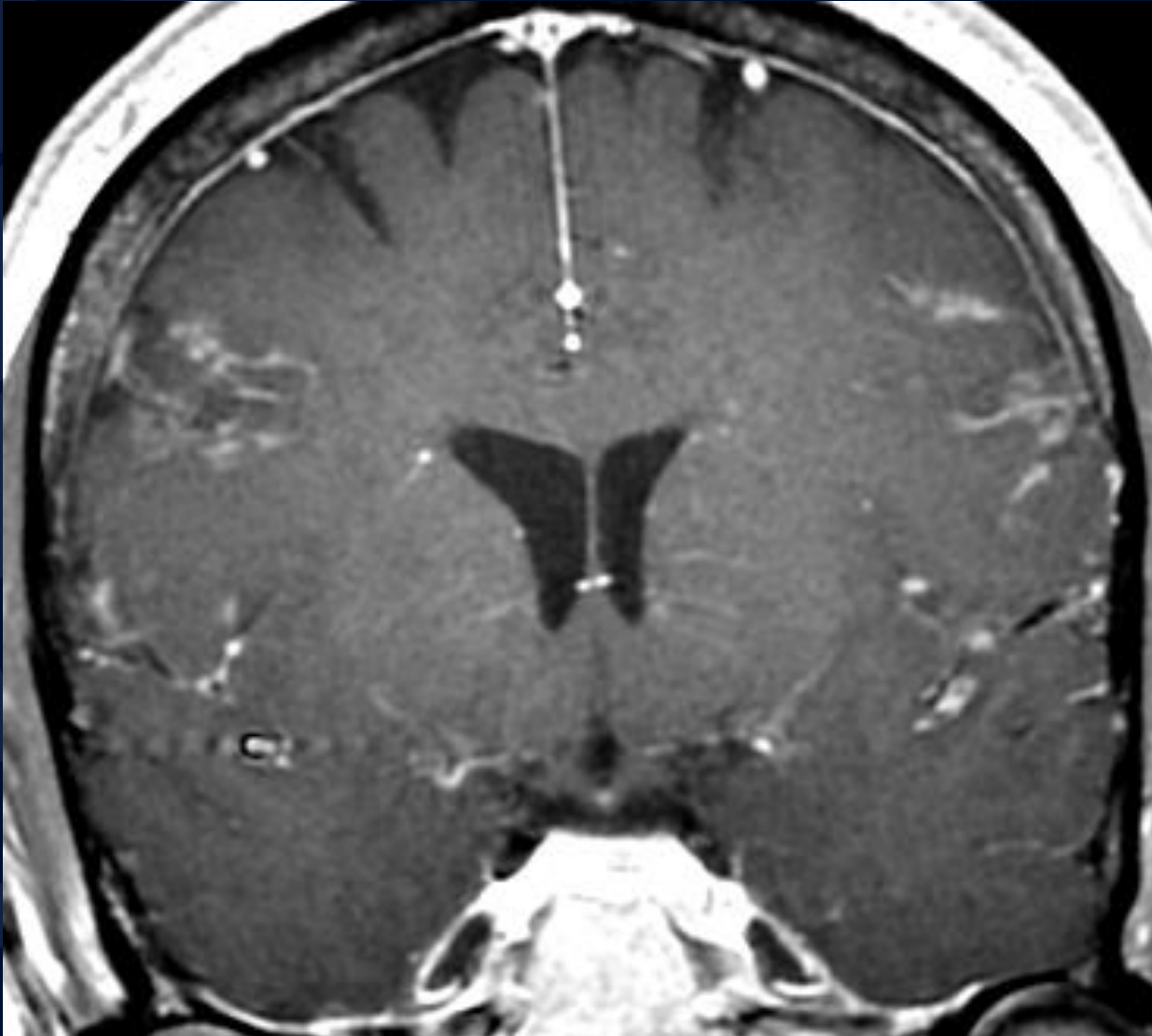


Sagittal
T1-Gd



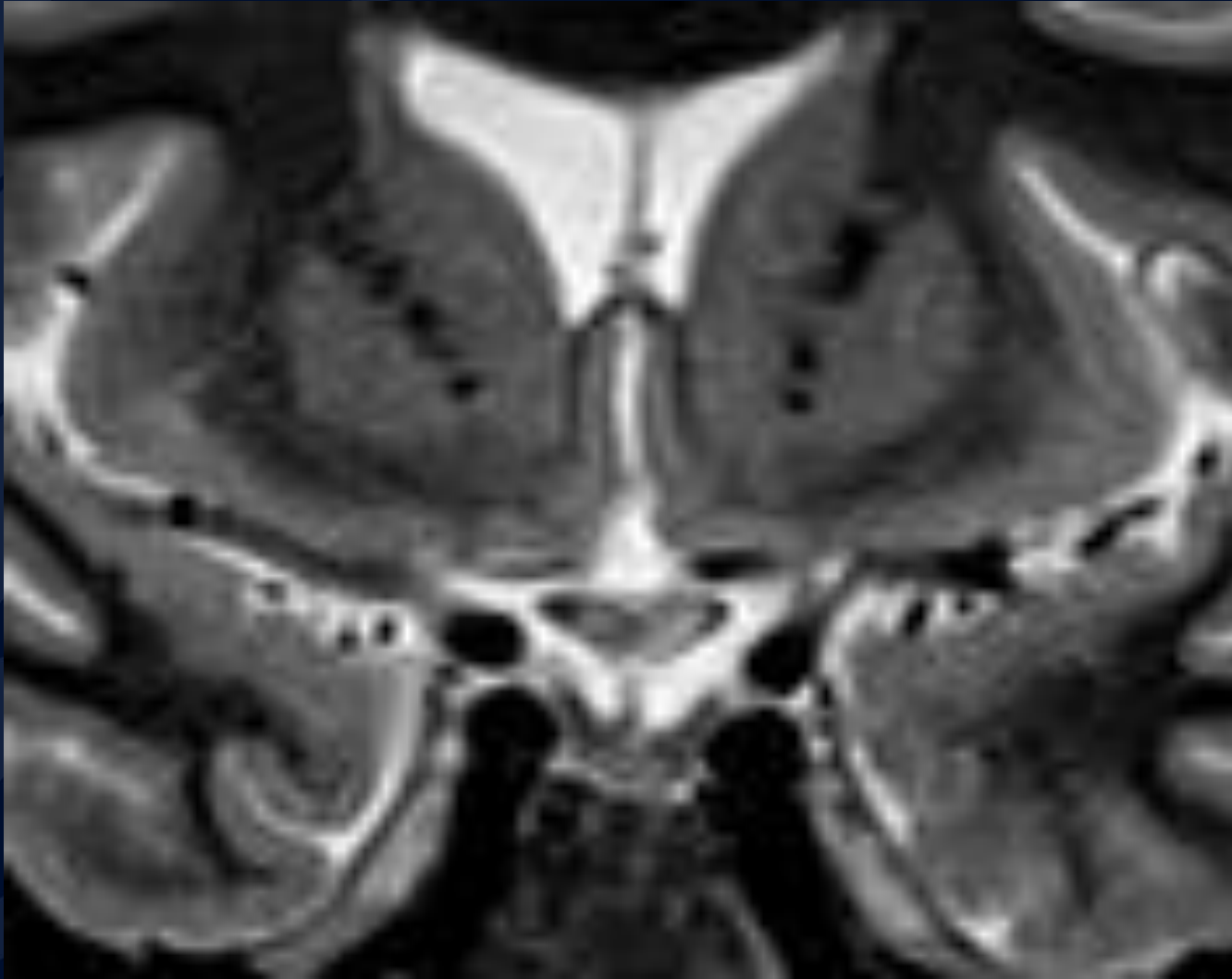
Coronal T1-Gd

8/14/19



Coronal STIR

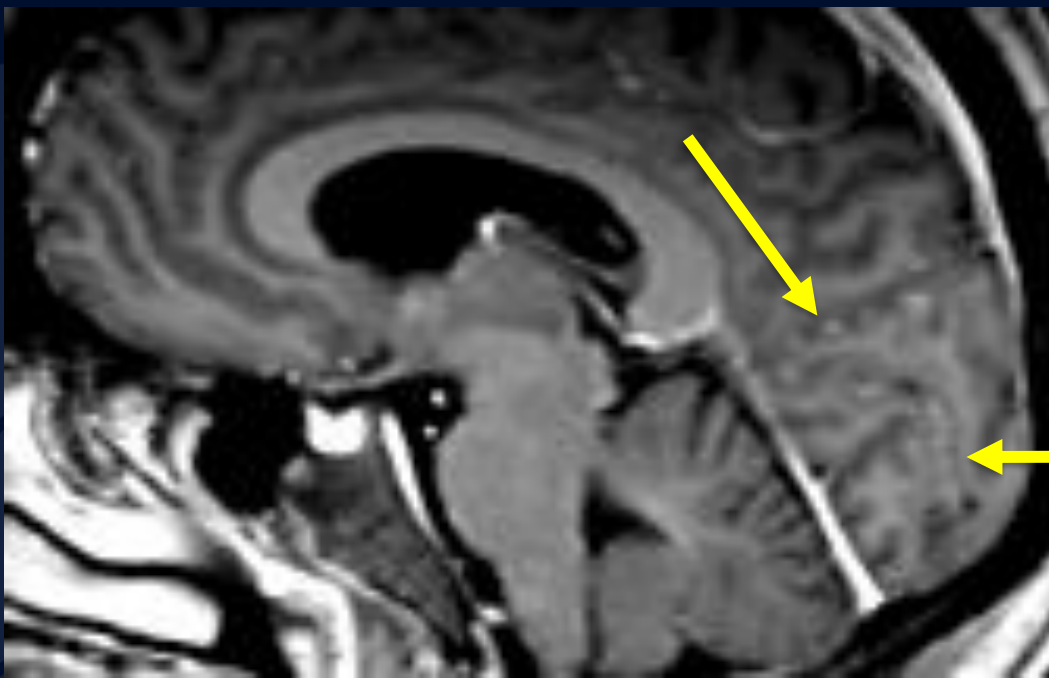
5/17/17





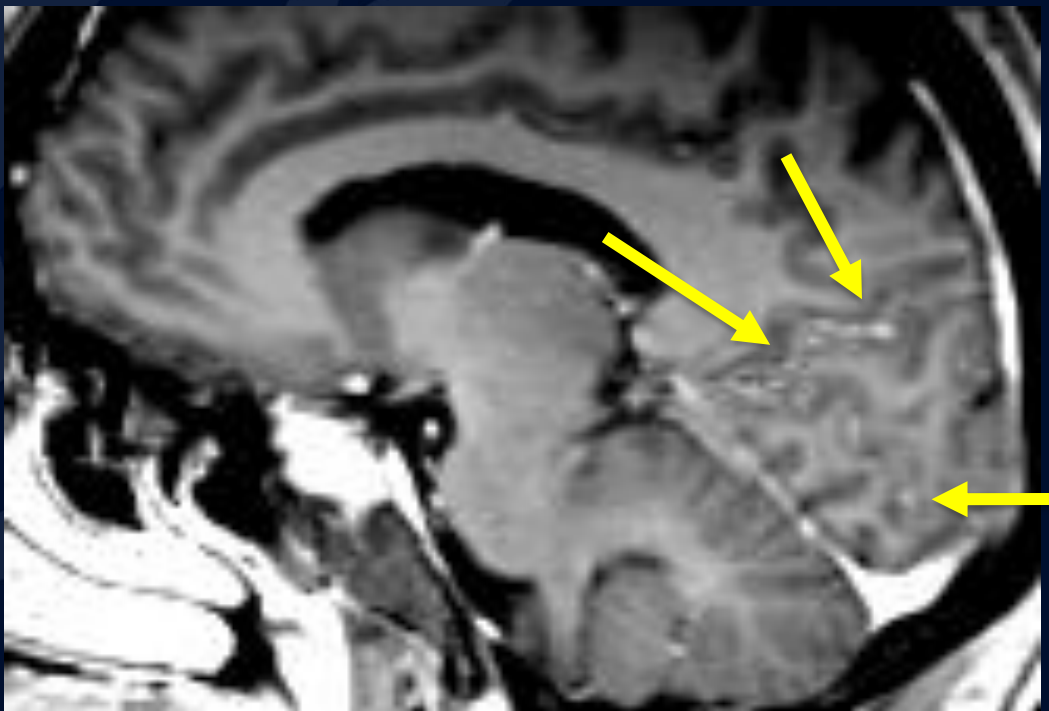
A large, stylized oak leaf graphic in a dark blue color, positioned on the left side of the slide. The leaf has a prominent central vein and several smaller veins branching off it. The leaf's edge is serrated.

Neurosarcoidosis

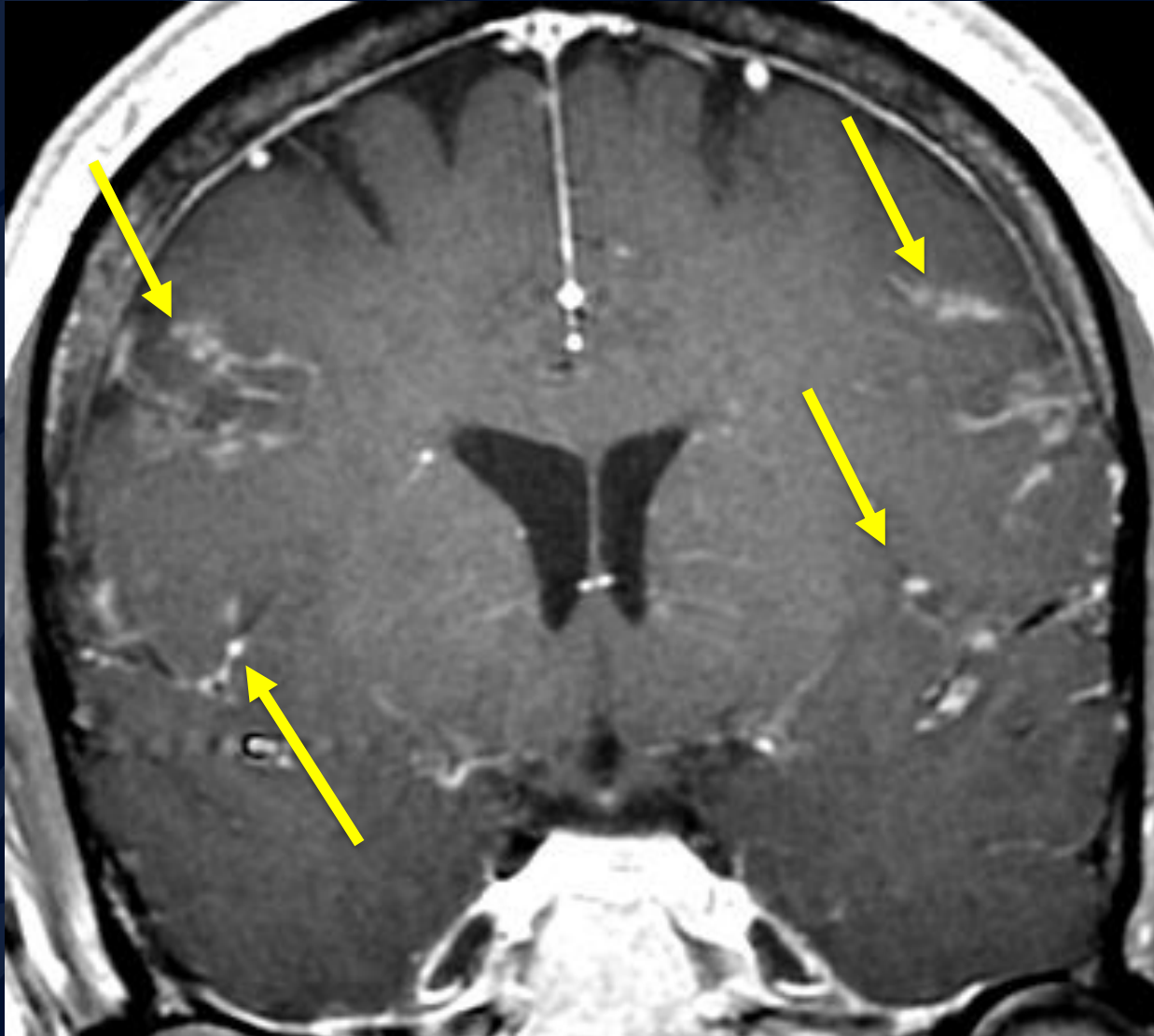


Sagittal T1-Gd

Sulcal & superficial
cortical nodular
enhancement seen in
the calcarine and
parieto-occipital sulci



Coronal T1-Gd



Sulcal & superficial cortical nodular enhancement seen bilaterally

Coronal STIR



Optic
chiasmal
involvement

Neurosarcoidosis

- Age peak: Typically occurring between 20 and 40 years of age
- Pathology: Granulomatous inflammation
- Locations: Commonly involves hypothalamus, pituitary, and optic chiasm
- Symptoms: Facial nerve palsy, optic neuropathy & diabetes insipidus are common

References:

1. Ginat, D., Dhillon, G., & Almast, J. (2011). Magnetic Resonance Imaging of Neurosarcoidosis. *Journal of Clinical Imaging Science*, 1(15). doi: 10.4103/2156-7514.76693
2. Kidd, D. P., Burton, B. J., Graham, E. M., & Plant, G. T. (2016). Optic neuropathy associated with systemic sarcoidosis. *Neurology-Neuroimmunology Neuroinflammation*, 3(5). doi:10.1212/nxi.0000000000000270
3. Neurosarcoidosis Information Page. (n.d.). Retrieved from <https://www.ninds.nih.gov/disorders/all-disorders/neurosarcoidosis-information-page>
4. Non, L., Brito, D., & Anastasopoulou, C. (2015). Neurosarcoidosis-associated central diabetes insipidus masked by adrenal insufficiency. *Case Reports*, 2015(jan22 1). doi: 10.1136/bcr-2014-206390
5. Dobosh K, Wolansky L. Neurosarcoidosis. *Radiology Online*. (2020)