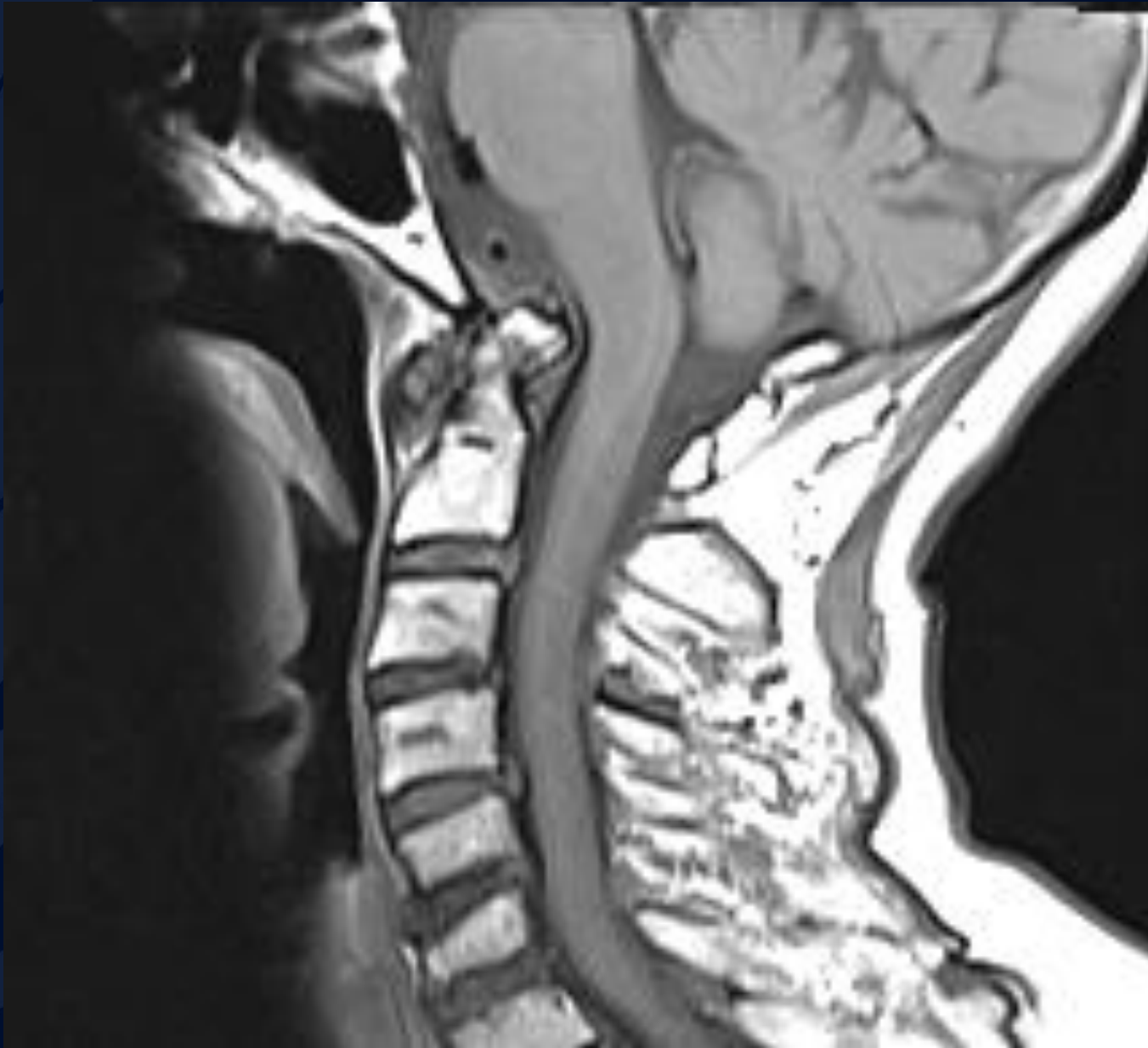


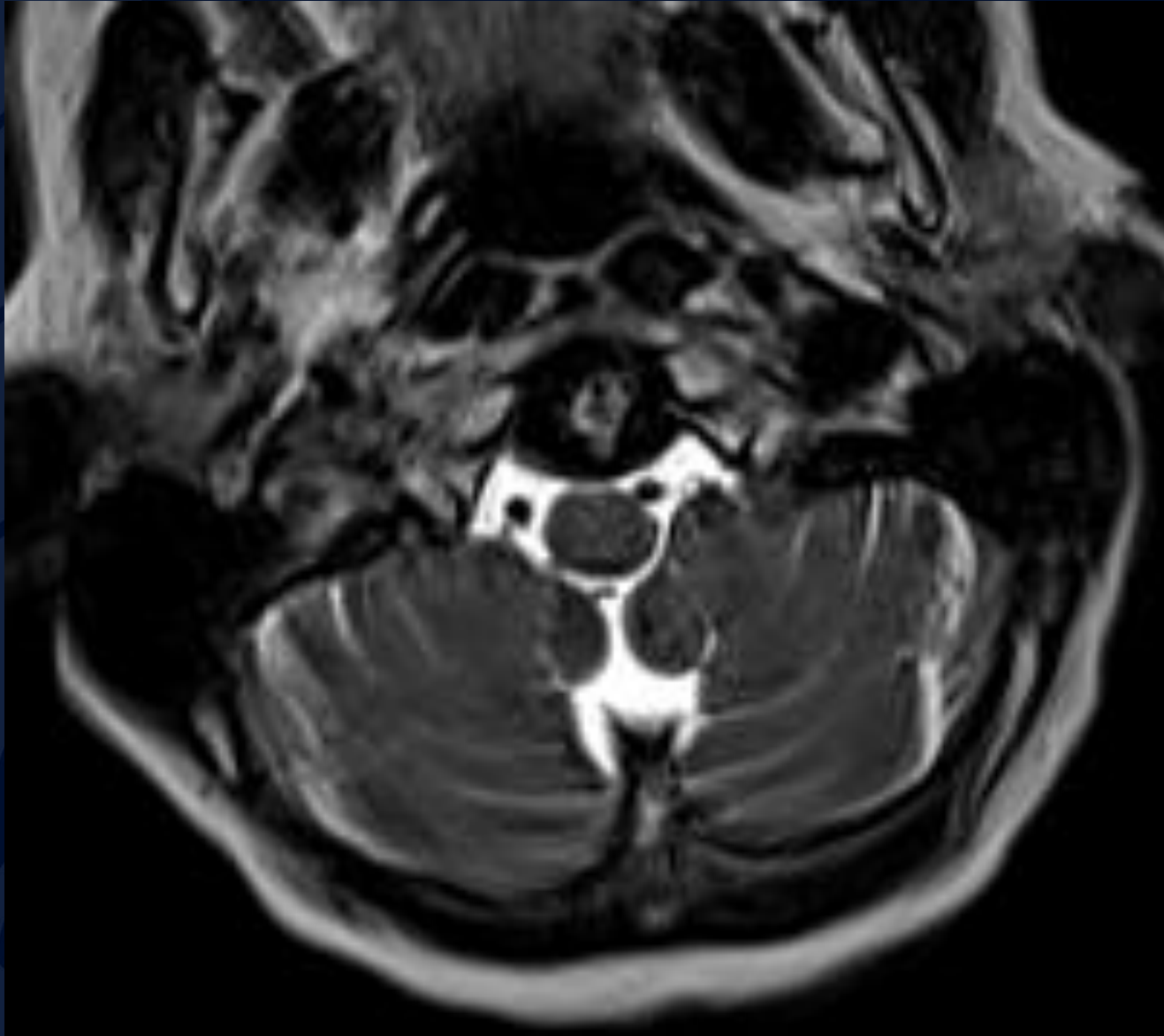
71 yo woman with neck pain and RA

Daniel Chen, MD
Leo Wolansky, MD
Edward Gillis, DO

T1



Axial T2-FSE





?

A large, stylized oak leaf graphic in a dark blue color, positioned on the left side of the slide. The leaf has a prominent central vein and several smaller veins branching off it. The leaf's edge is serrated.

Basilar Invagination

T1

McRae Line:
basion to opisthion

Tip of odontoid
process:
normally ~5 mm
below McRae
line

Basilar
invagination
diagnosed when
tip crosses line



Basilar Invagination

Definition: Craniocervical junction abnormality where the tip of the odontoid process projects above the foramen magnum

Causes

- Congenital
 - osteogenesis imperfecta
 - Klippel-Feil syndrome
 - achondroplasia
 - Chiari I malformation/Chiari II malformation
 - cleidocranial dysostosis
 - Schwartz-Jampel syndrome 2
- Acquired
 - rheumatoid arthritis
 - Paget disease
 - hyperparathyroidism
 - osteomalacia/rickets

Management

- Based on symptoms – if necessary, surgical anterior decompression and posterior stabilization

References

1. Chen D., Wolansky L., Gillis E. Basilar Invagination. Radiology Online 2020