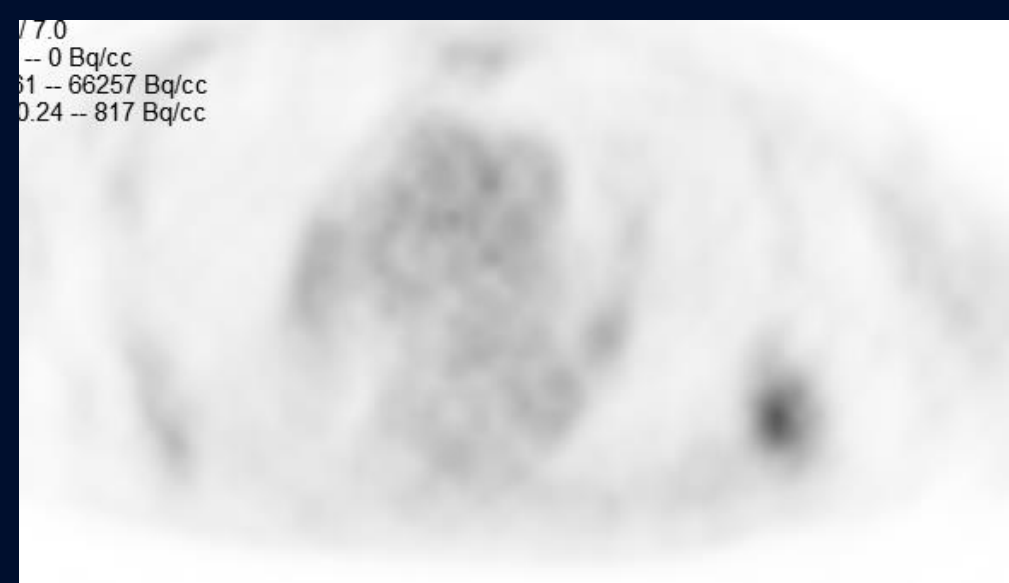
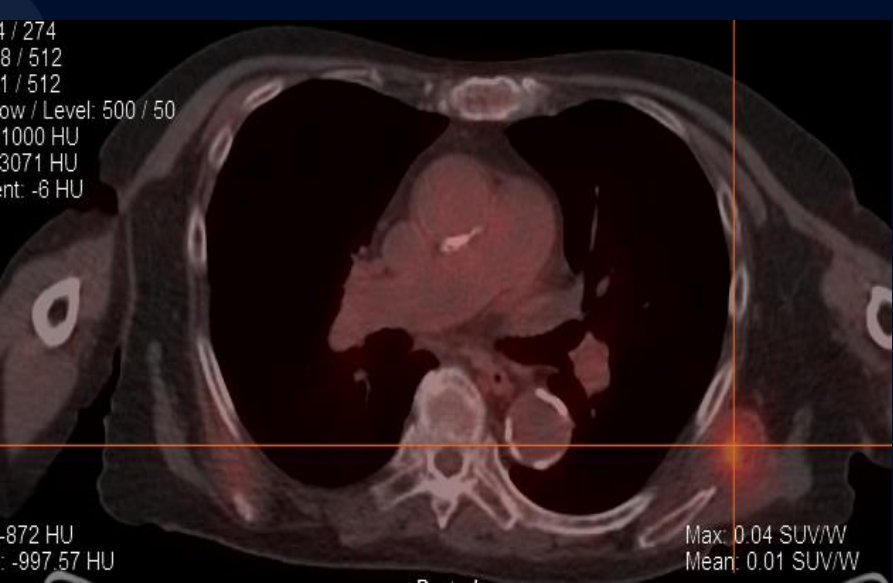


72 yr old man with hx of prostate cancer

Allan Zhang, DO

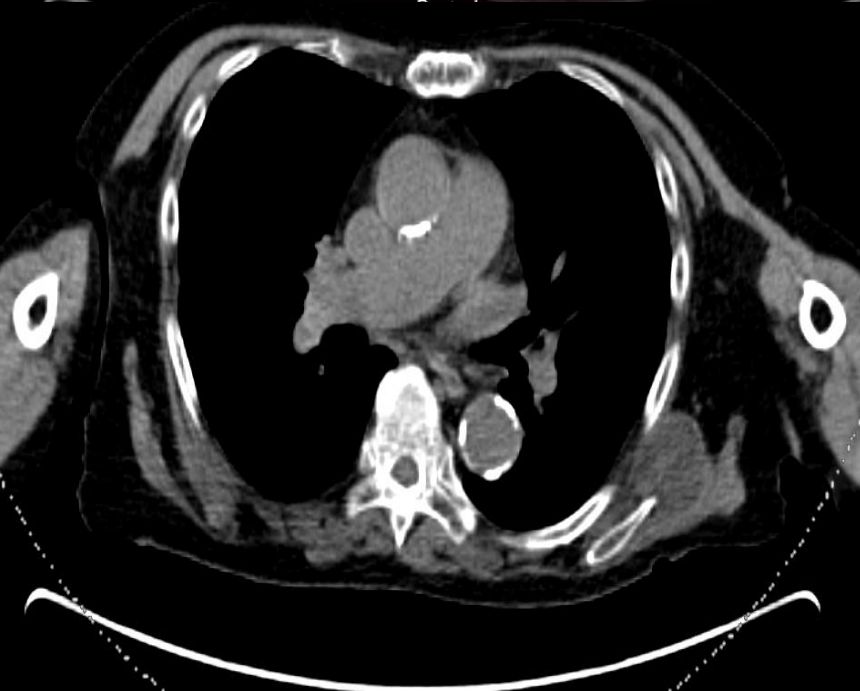
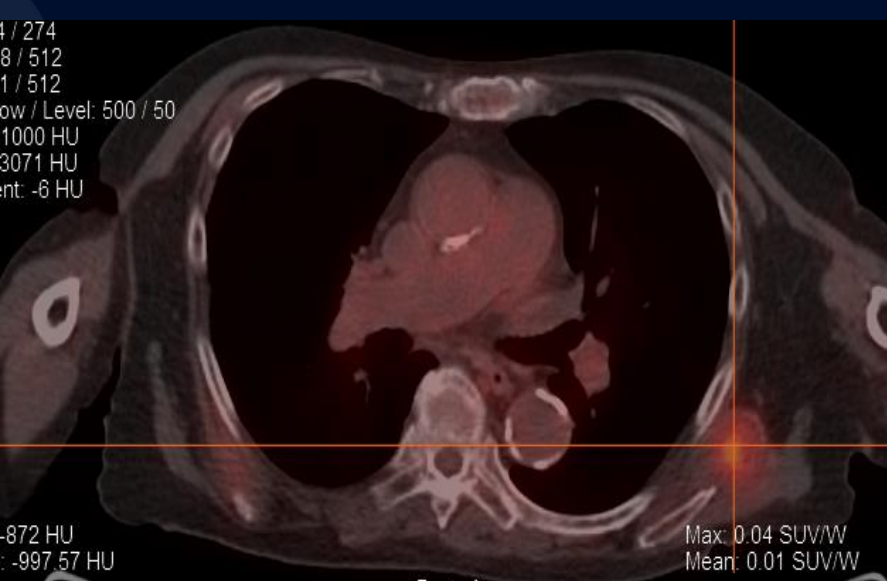
David Karimeddini, MD



A large, stylized oak leaf graphic in a dark blue color, positioned on the left side of the slide. It features detailed vein patterns and a lobed edge.

?

Elastofibroma dorsi



Mildly FDG avid mass in the left
infrascapular region

Elastofibroma dorsi

- Benign soft tissue tumor classically located in the infrascapular regions, deep to the serratus anterior and latissimus dorsi musculature.
- Generally asymptomatic
- Composed of fibrous tissue with internal fatty streaks
- CT: poorly defined soft tissue mass with fat attenuation.
- MRI: alternating fibrous and fatty tissue. T1 and T2→fibrous components demonstrate isointensity to muscle; fatty components demonstrate high signal. May demonstrate heterogeneous low level enhancement
- PET/CT: mild to moderate uptake in characteristic location

References

[Elastofibroma Dorsi](#) Jennifer E. Ochsner, Sarah A. Sewall, Gregory N. Brooks, and Rashmi Agni. RadioGraphics 2006 26:6, 1873-1876