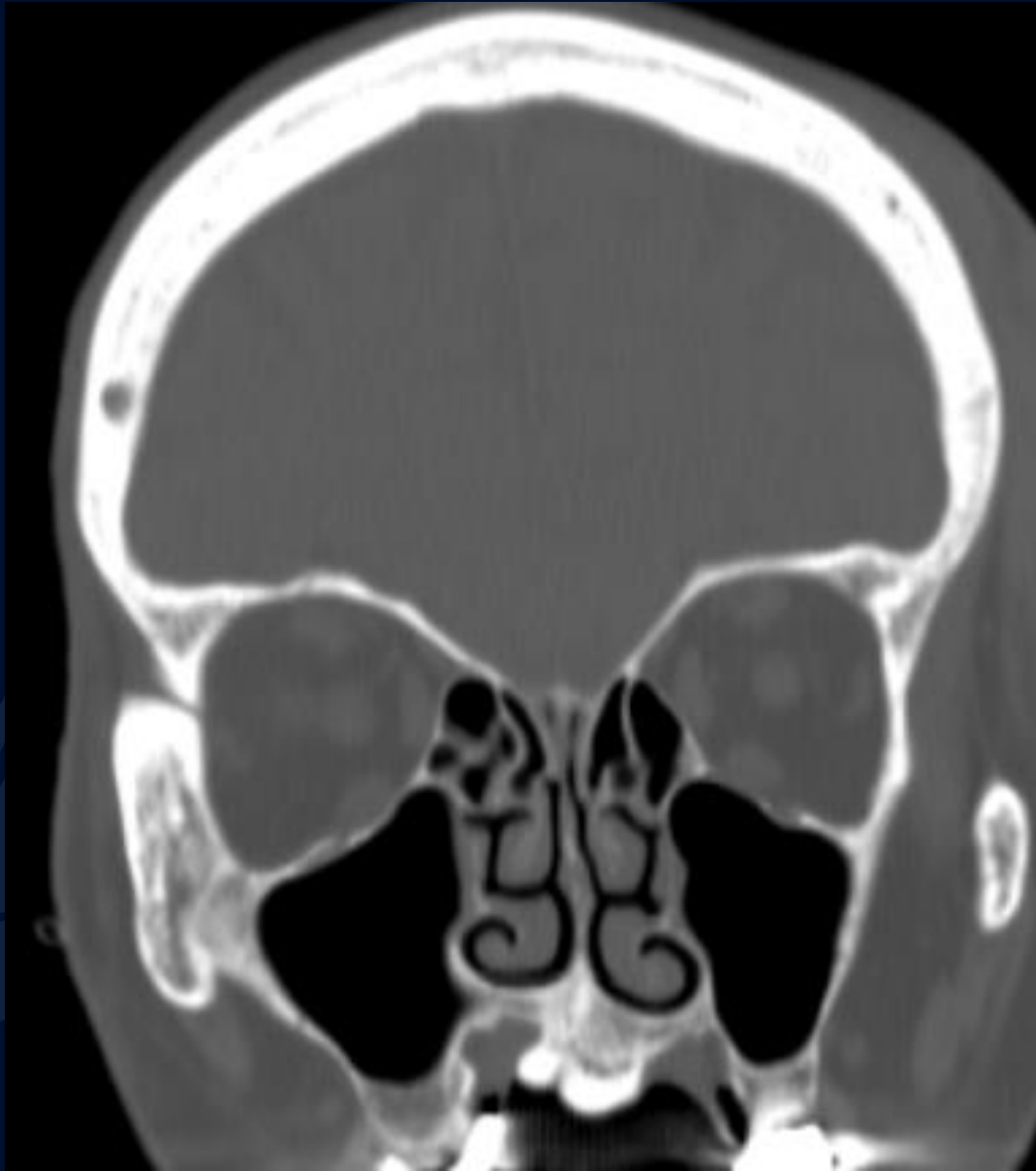


# 92-year-old female presents with fall and scalp hematoma with incidental finding

John J. DeBevits IV, MD

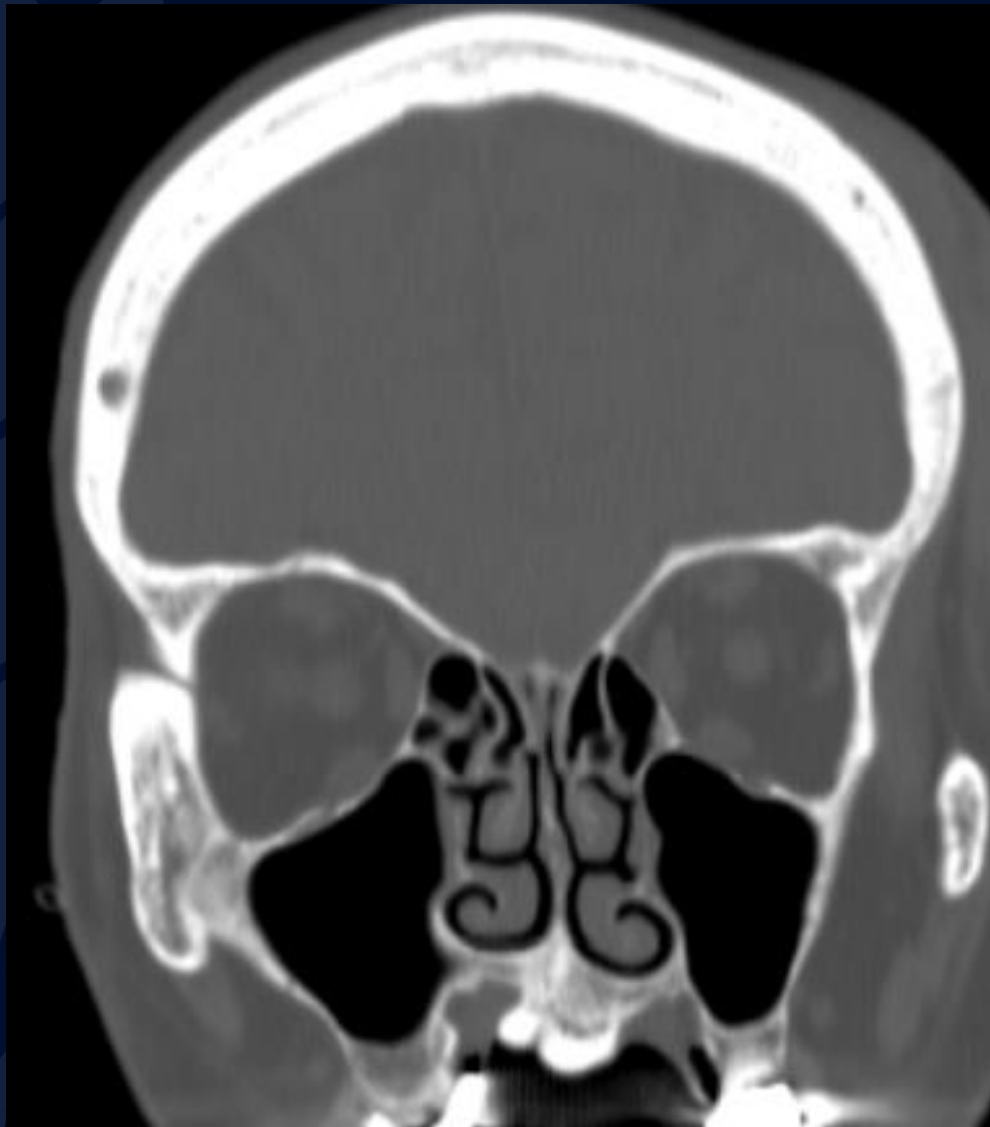
Leo Wolansky, MD



A large, stylized oak leaf graphic in a dark blue color, positioned on the left side of the slide. It features detailed vein patterns and a lobed edge.

?

# Torus palatinus



Coronal NECT image (left), and zoomed view (below) demonstrate a lobulated bony protuberance arising from the hard palate that has both spongiform internal bone and an overlying cortex.



# Torus palatinus

- Exophytic proliferation of cortical and cancellous bone in the midline of the hard palate, possibly arising due to increased mechanical stresses and protective bony proliferation; possible underlying genetic component
- May be very small and nodular or large and multilobulated
- Zero malignant potential; only removed if they interfere with function or are recurrently traumatized
  - Asymptomatic unless traumatized
- Associated with alveolar process exostoses and mandibular tori
- Female > male; increased prevalence in Mongols and Eskimos
- Usually develop before age 30 but may grow over time

# References

- Buccal and palatal exostoses: Prevalence and concurrence with tori. Jai Kittivong, Aree et al. Oral Surgery, Oral Medicine, Oral Pathology, Oral Radiology and Endodontics , Volume 90 , Issue 1 , 48 – 53
- Mandibular Tori Are Associated With Mechanical Stress and Mandibular Shape. Cortes, Arthur Rodriguez Gonzalez et al. Journal of Oral and Maxillofacial Surgery , Volume 72 , Issue 11 , 2115 - 2125