

34M with abdominal pain

Jeffrey Guzelian, MD

Swapnil Bagade, MD

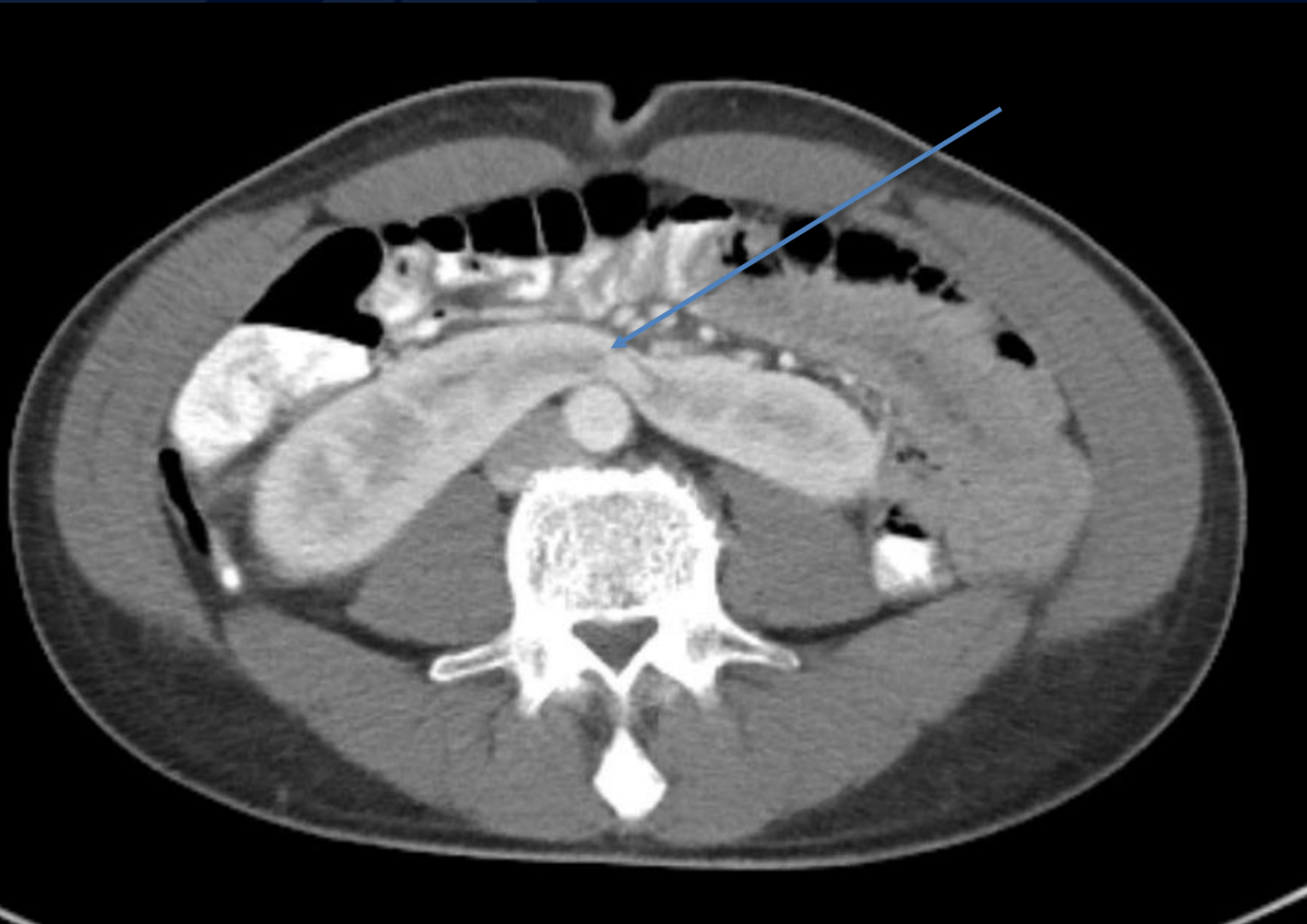


A large, stylized oak leaf graphic in a dark blue color, positioned on the left side of the slide. It features detailed vein patterns and a lobed edge.

?

Horseshoe kidney

Axial CECT abdomen pelvis demonstrates midline fusion of the kidneys at the lower poles (arrow).



Horseshoe Kidney

- Congenital anomaly in which kidneys are fused by isthmus at lower poles
- 90% midline/symmetrical fusion
- Complications:
 - Traumatic injury
 - Recurrent infections: Vesicoureteral reflux and UPJ obstruction
 - Urolithiasis: 75% metabolic calculi, 25% struvite calculi
 - Wilms tumor 2-8x more common in children
 - Primary renal cell carcinoma: Increased prevalence