

# 34M with abdominal pain

Jeffrey Guzelian, MD

Swapnil Bagade, MD

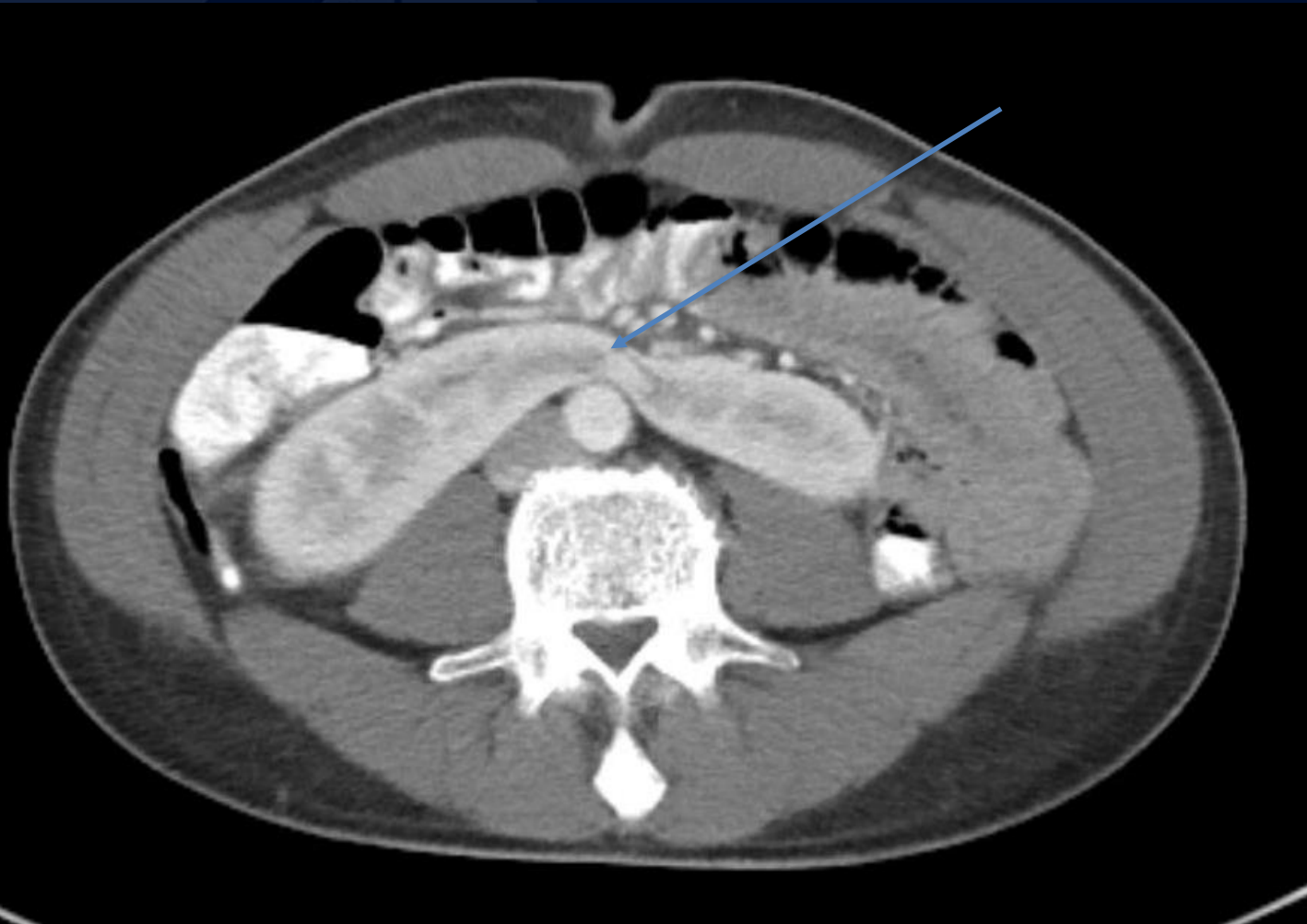


A large, stylized oak leaf graphic in a dark blue color, positioned on the left side of the slide. The leaf has a prominent central vein and several smaller veins branching off it. The leaf's edge is serrated.

?

# Horseshoe kidney

Axial CECT abdomen pelvis demonstrates midline fusion of the kidneys at the lower poles (arrow).



# Horseshoe Kidney

- Congenital anomaly in which kidneys are fused by isthmus at lower poles
- 90% midline/symmetrical fusion
- Complications:
  - Traumatic injury
  - Recurrent infections: Vesicoureteral reflux and UPJ obstruction
  - Urolithiasis: 75% metabolic calculi, 25% struvite calculi
  - Wilms tumor 2-8x more common in children
  - Primary renal cell carcinoma: Increased prevalence