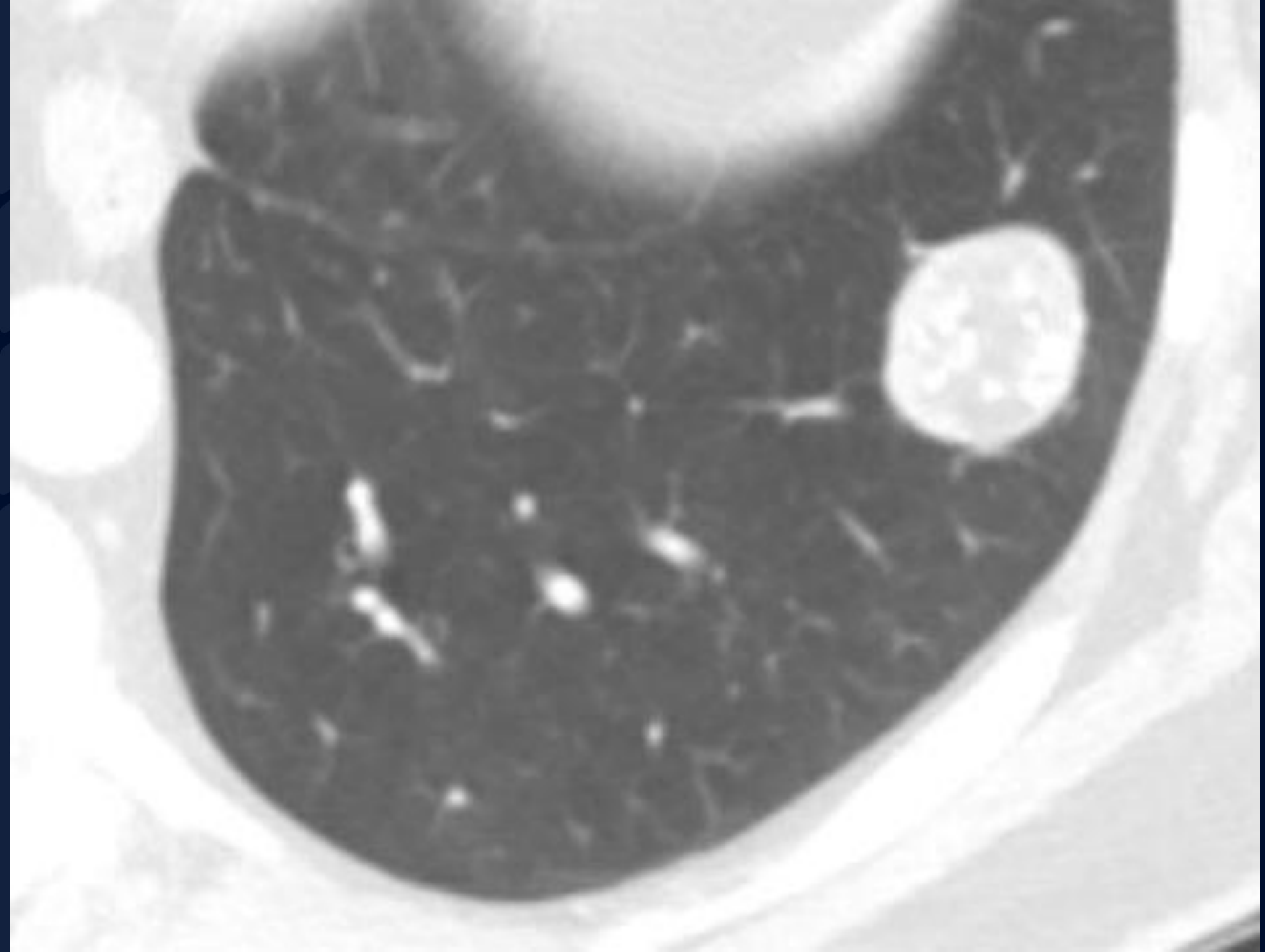
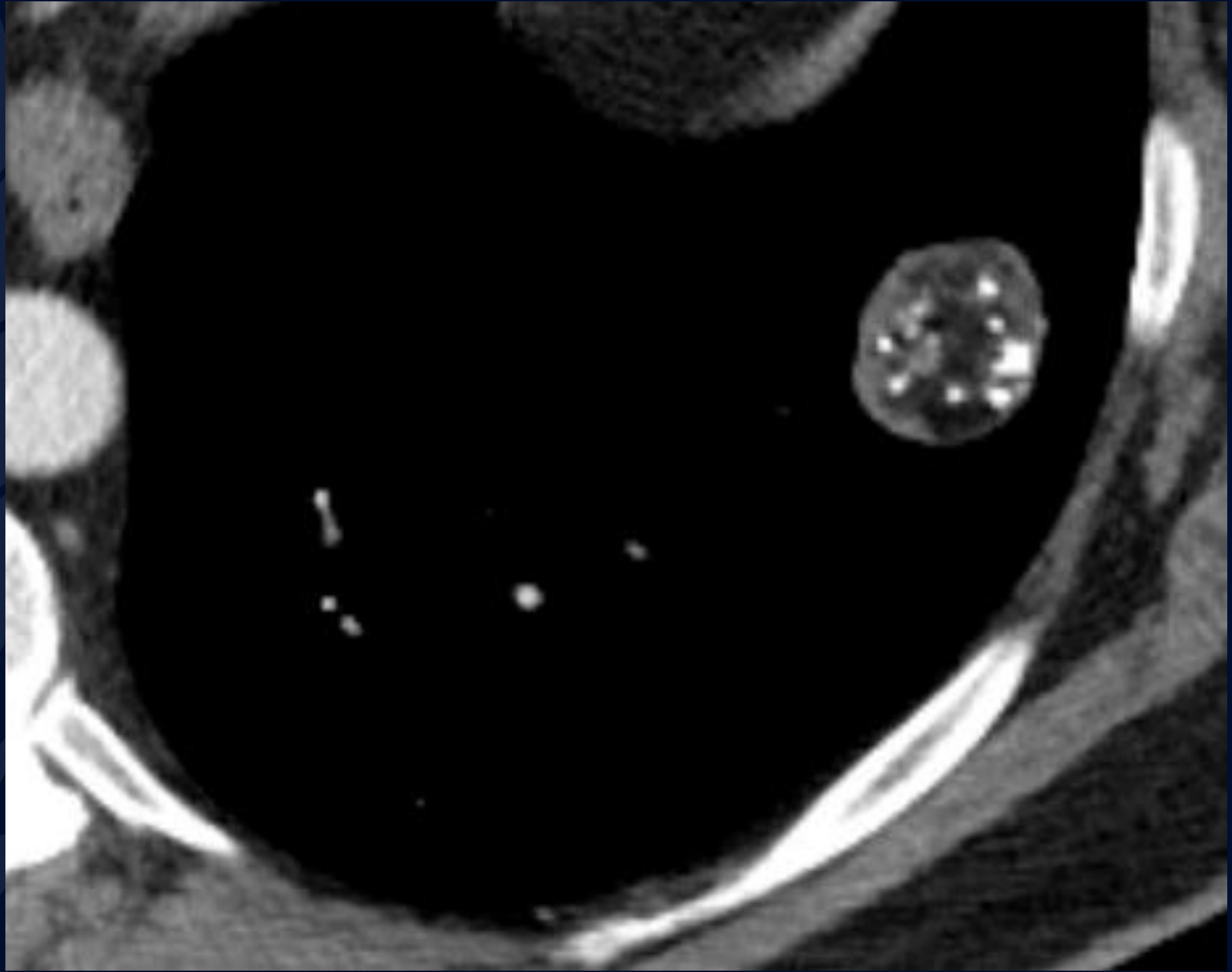


A large, stylized oak leaf graphic in a dark blue color, positioned on the left side of the slide. The leaf has a prominent central vein and several smaller veins branching off it. The background of the slide is a solid dark blue.

# 65M with cough

Jeffrey Guzelian, MD



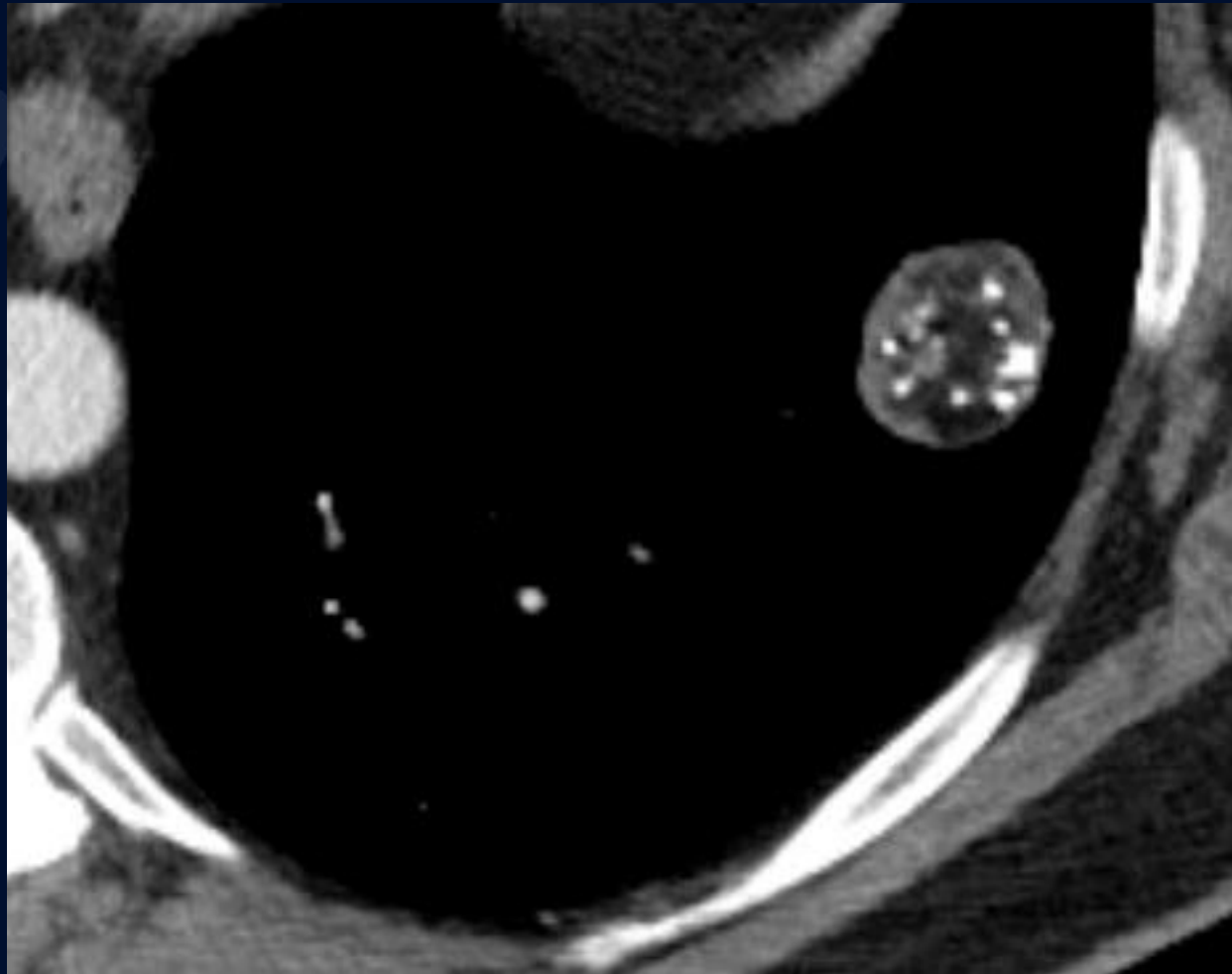


A large, stylized oak leaf graphic in a dark blue color, positioned on the left side of the slide. It features detailed vein patterns and a lobed edge.

?

# Pulmonary hamartoma

CECT of the chest demonstrates a peripheral pulmonary nodule which contains calcifications and fat



# Pulmonary hamartoma

- Benign pulmonary neoplasm composed of cartilage, connective tissue, muscle, fat, bone
- One of the most common benign tumors of lung (8% of all lung neoplasms)
- 90% located peripherally
- Usually found incidentally as solitary pulmonary nodule
- CT findings:
  - Nodule with intralesional fat and calcification
  - Calcification 5-50% (popcorn configuration)
  - Fat > 60%
- DDX: pulmonary mature teratoma, lipoma (rare)

# References

1. Thomas JW, Staerkel GA, Whitman GJ. Pulmonary hamartoma. AJR Am J Roentgenol. 1999;172 (6): 1643