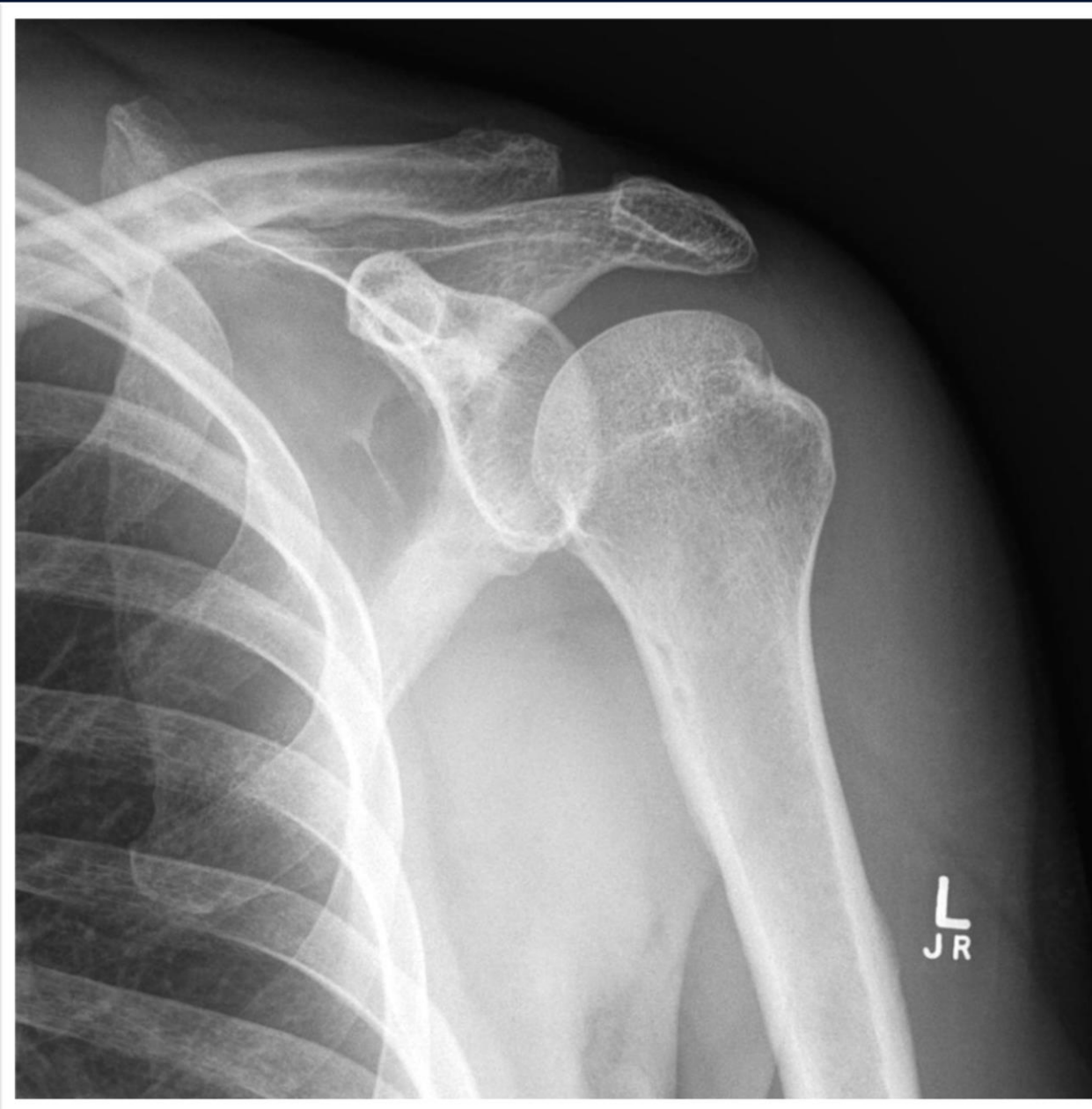


27 y/o male with shoulder pain

Edward Gillis, DO

Additional History

- Injured shoulder lifting weights
- Possible dislocation



UConn
HEALTH

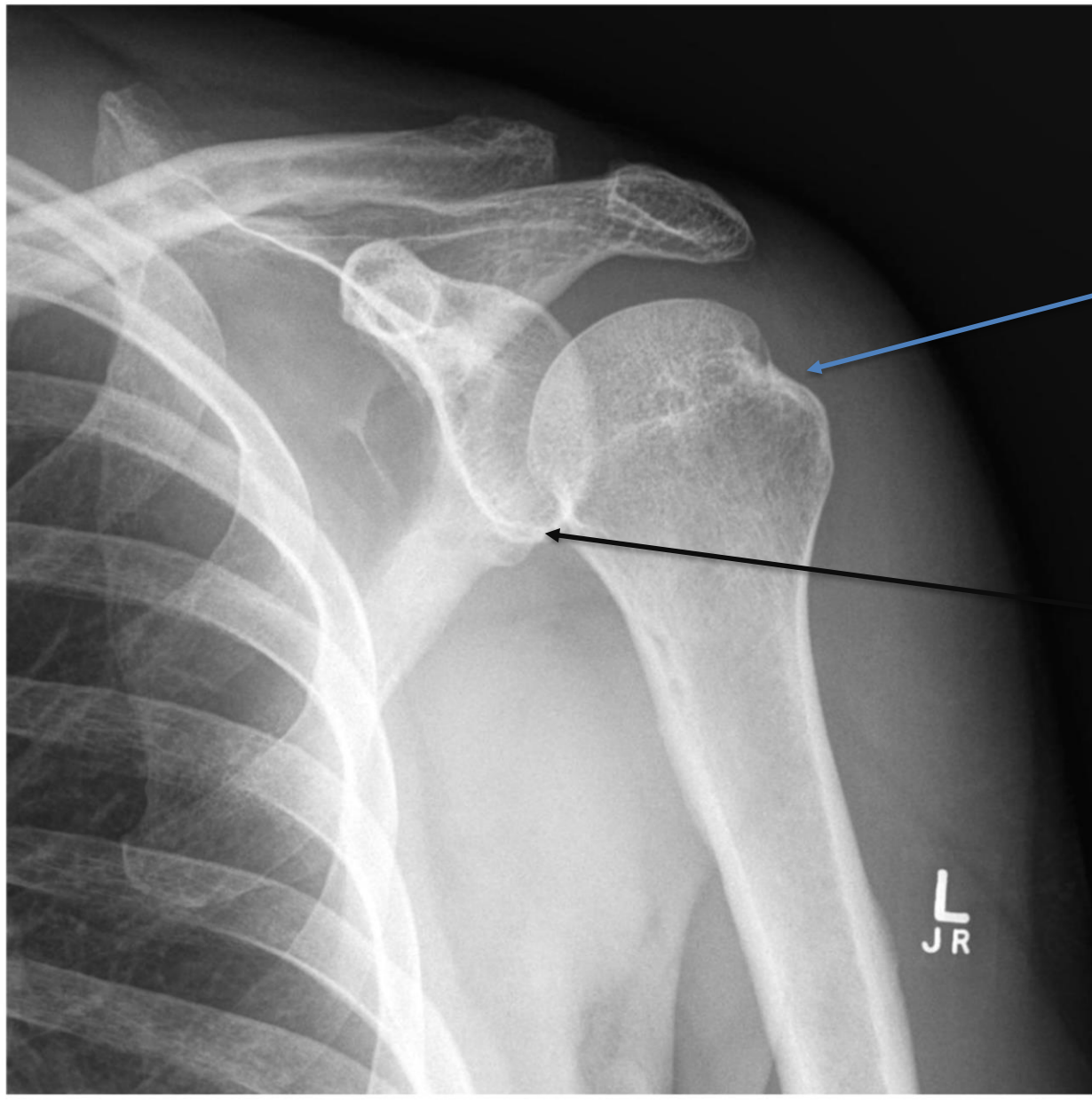
RADIOLOGY





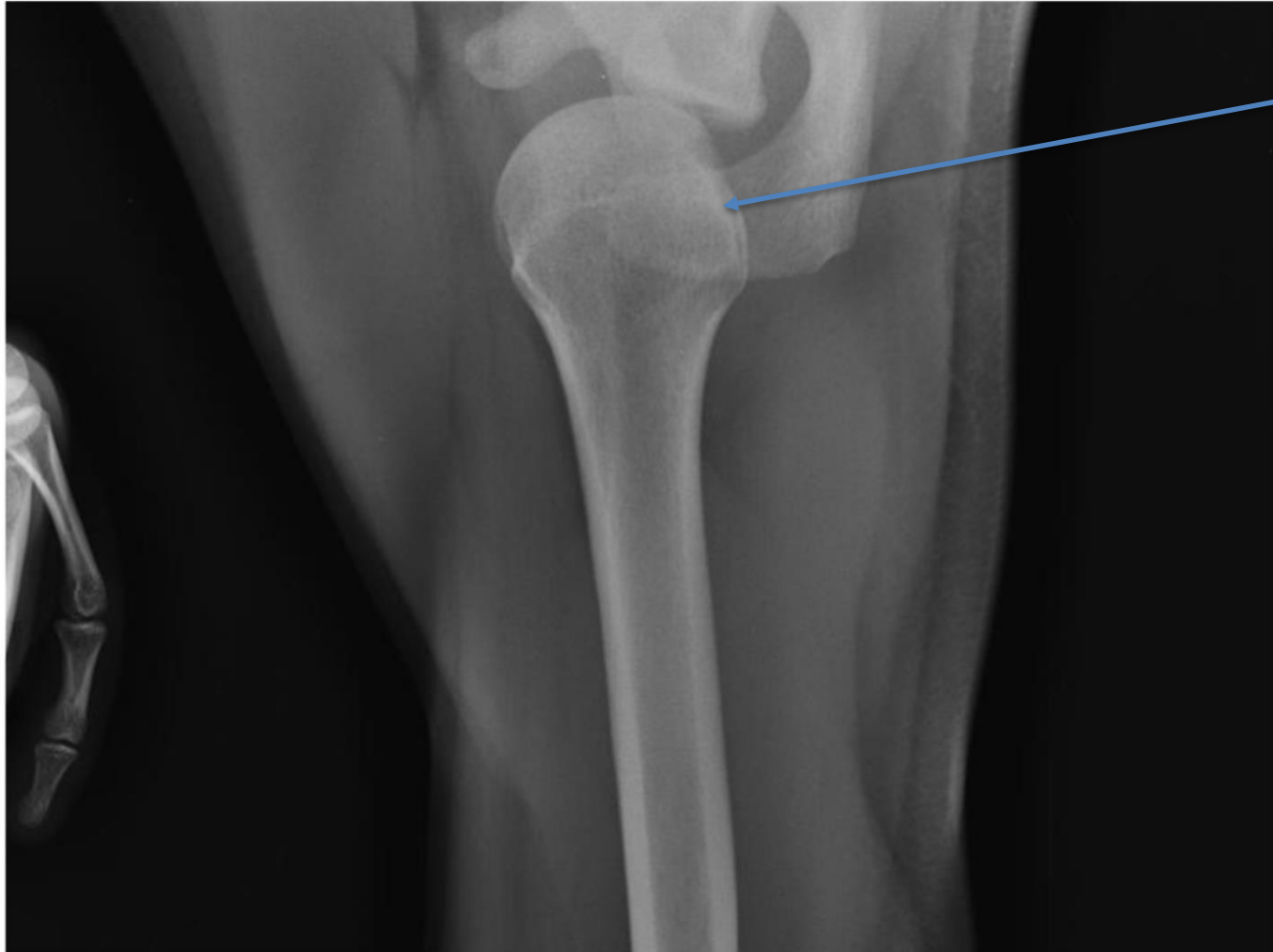
?

Hill-Sachs lesion with bony Bankart fracture



Hill-Sachs lesion

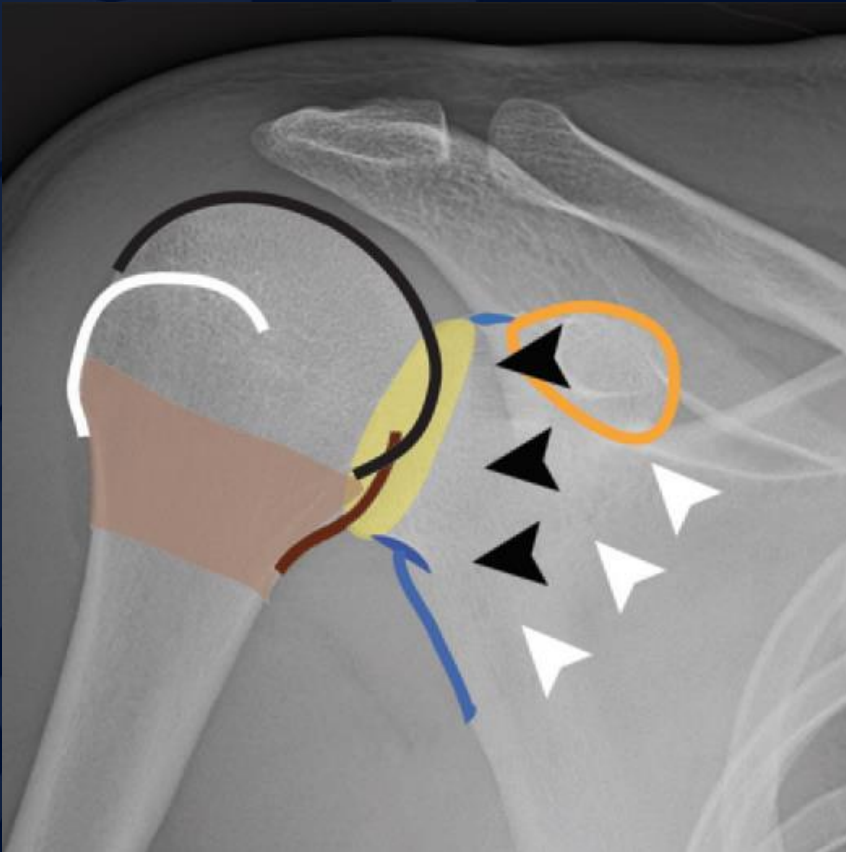
Bony Bankart lesion



Hill-Sachs lesion

Normal Shoulder Anatomy

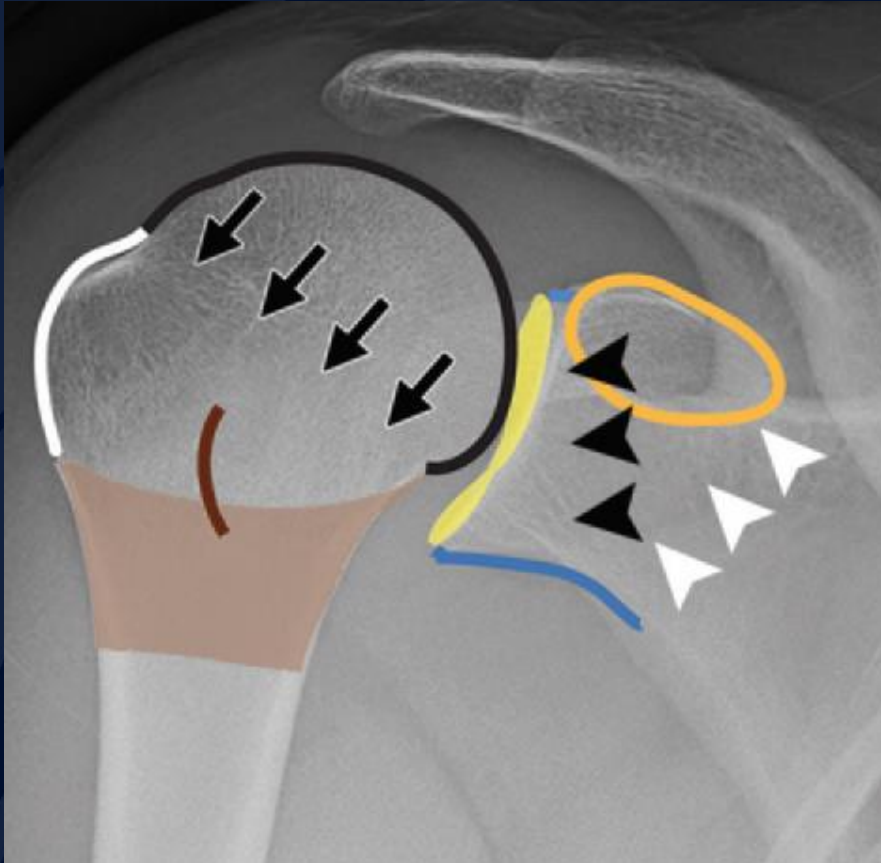
- Humeral head (black line)
- Greater tuberosity (white line)
- Lesser tuberosity (brown line)
- Surgical neck (brown shade)



Sandstrom, Claire K., et al. "Acute Shoulder Trauma: What the Surgeon Wants to Know."

Anteroposterior view

Normal Shoulder anatomy



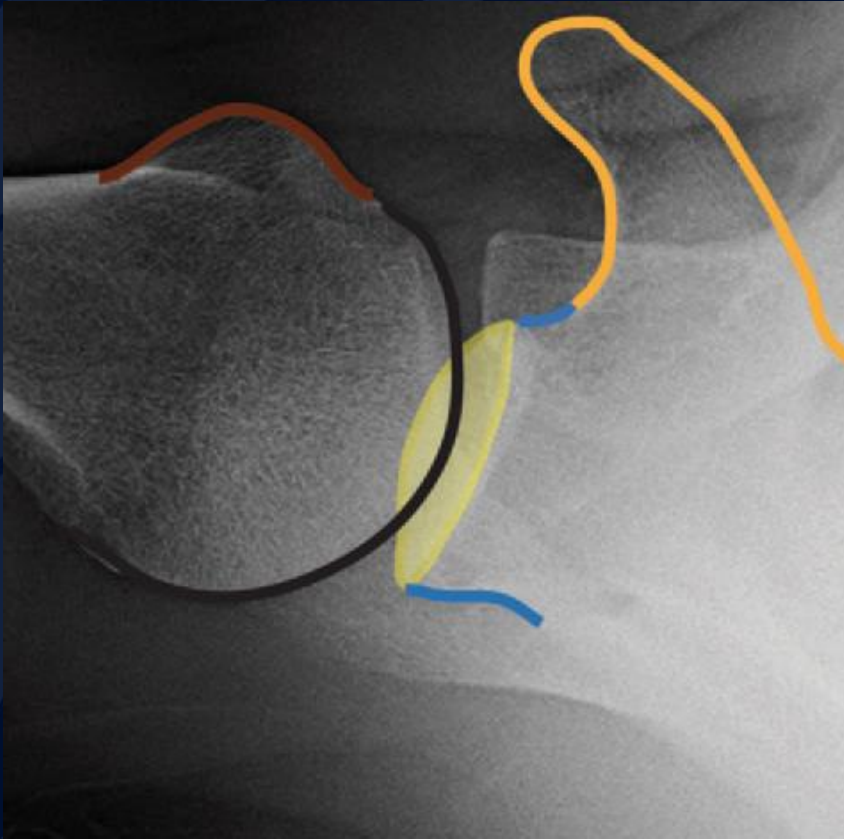
- Joint capsule attaches at the anatomic neck of the humeral head (arrows)
- Glenoid process of the lateral scapula is formed by the glenoid fossa (yellow shadow) and glenoid neck (blue lines)
- Base of coracoid process (gold outline) demarcates the anatomic glenoid neck (black arrowheads)
- Surgical neck (brown shade)

Sandstrom, Claire K., et al. "Acute Shoulder Trauma: What the Surgeon Wants to Know."

Grashey View

Normal Shoulder Anatomy

- Humeral head (black line)
- Lesser tuberosity (brown line)
- Glenoid fossa (yellow shadowing)
- Glenoid neck (blue lines)
- Coracoid process (gold outline)



Sandstrom, Claire K., et al. "Acute Shoulder Trauma: What the Surgeon Wants to Know."

Axillary view

Hill-Sachs lesion

- Occurs during anterior glenohumeral dislocation.
- Strong muscle contraction and ligaments impact posterolateral humeral head against the anteroinferior glenoid
- Wedge-shaped defect on the superior portion of the posterolateral humeral head
 - Posterior and medial to the greater tuberosity
 - Can be identified as a flattening or indentation of the humeral contour close to the contour of the greater tuberosity

Bankart and Bony Bankart Lesion

- A Bankart lesion is detachment of the glenoid labrum and joint capsule from the anterior glenoid rim during anterior glenohumeral dislocation.
 - Bankart Lesion
- Occasionally accompanied by an anterior glenoid fracture
 - Bony Bankart lesion

References

- Sandstrom, Claire K., et al. “Acute Shoulder Trauma: What the Surgeon Wants to Know.” *RadioGraphics*, vol. 35, no. 2, 2015, pp. 475–492., doi:10.1148/rg.352140113.