

# 65 y/o M with shortness of breath and chest pain

Atul Kumar, MD, MS



AP Chest Radiograph



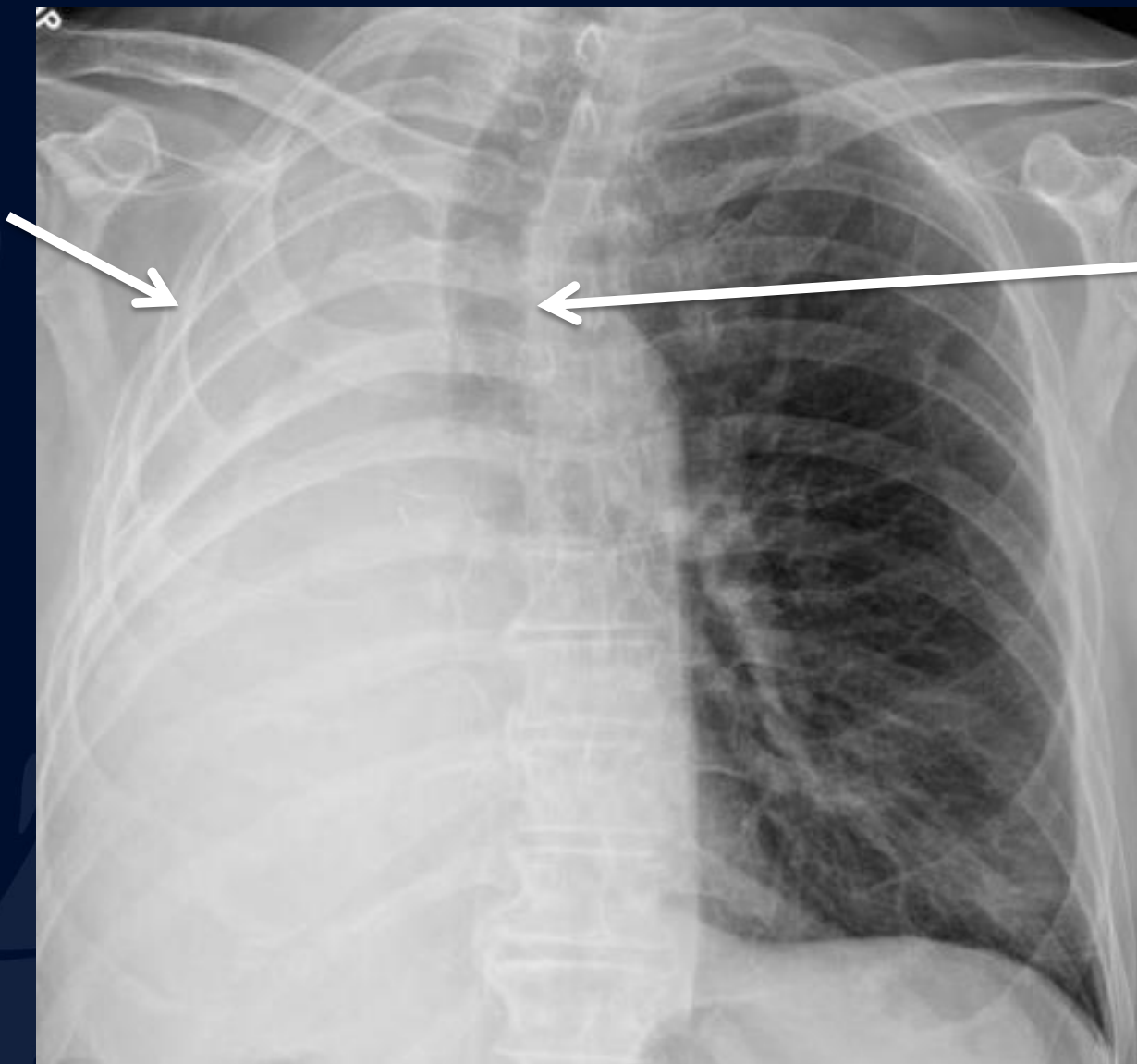
Axial Contrast Enhanced CT

A large, stylized oak leaf graphic in a dark blue color, positioned on the left side of the slide. It features detailed vein patterns and a lobed edge.

?

# Right Pneumonectomy

Total opacification of right hemithorax

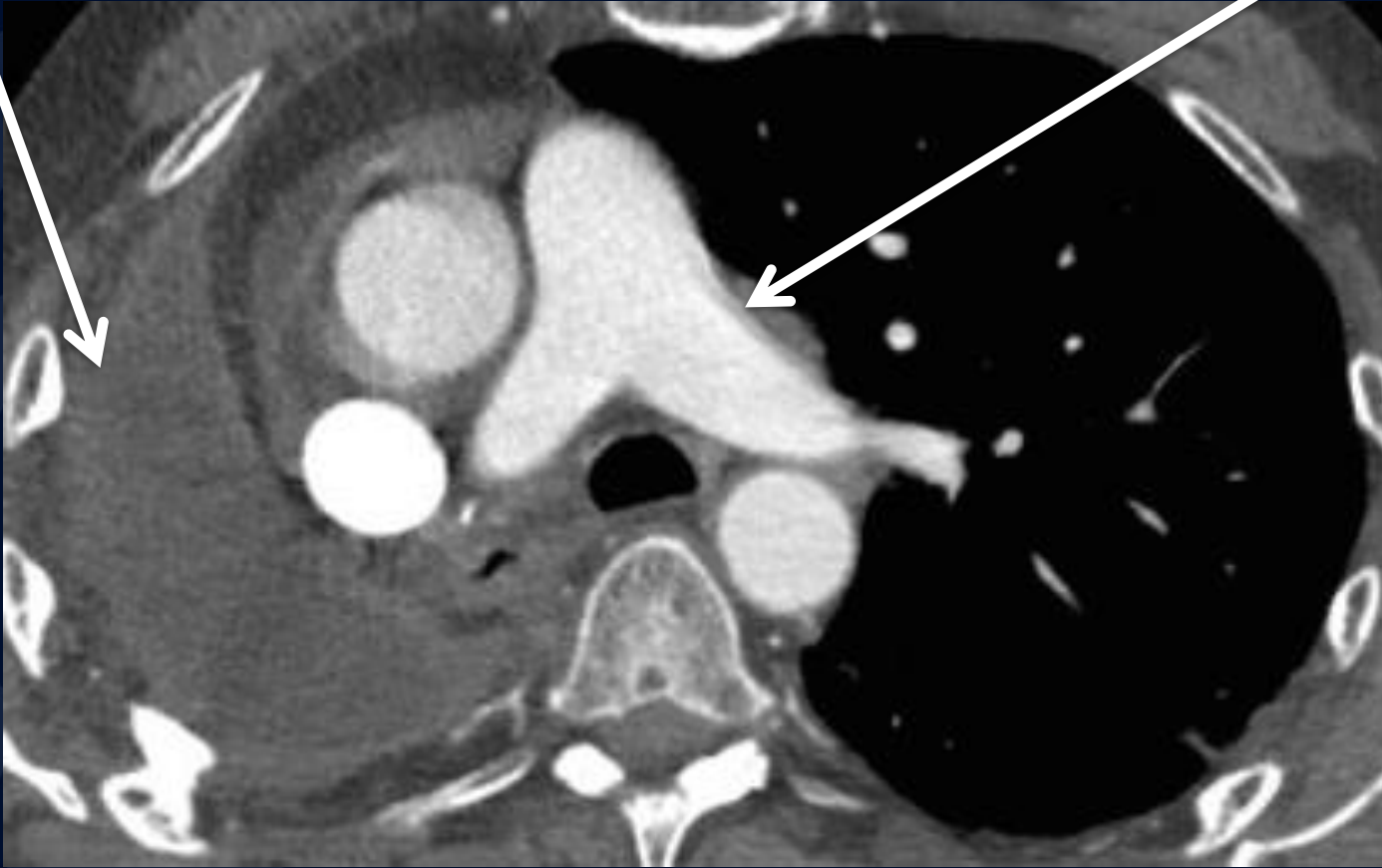


Rightward shift of trachea and mediastinal structures

AP Chest Radiograph

Fluid in  
pneumonectomy  
bed

Rightward shift of  
trachea and  
mediastinal  
structures



Axial Contrast Enhanced CT

# Pneumonectomy

- Surgical resection of lung and visceral pleura
- Treatment of lung cancer, tuberculosis, or bronchiectasis
- Differential Diagnosis
  - Midline shift towards affected side
    - Pneumonectomy
    - Total lung collapse
    - Pulmonary agenesis/hypoplasia
  - Midline shift away from affected side
    - Pleural Effusion
    - Chylothorax
    - Mass
    - Diaphragmatic hernia
  - No shift of midline
    - Consolidation
    - Pulmonary edema
- Early Imaging
  - Lucency in pneumonectomy space
  - Mediastinal structures midline
  - Pneumonectomy space fills gradually
- Late Imaging
  - Hemithorax white-out
  - Mediastinal shift towards pneumonectomy