

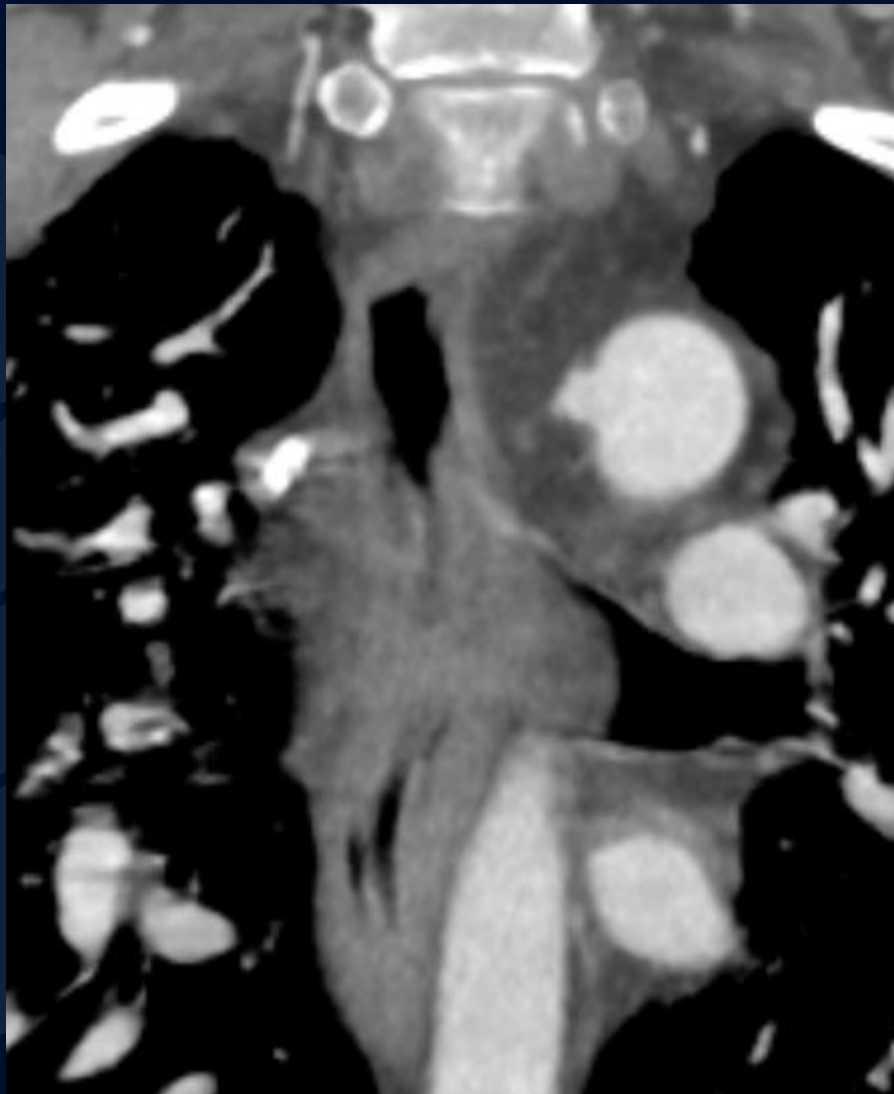
A large, stylized oak leaf graphic in a dark blue color, positioned on the left side of the slide, partially overlapping the text.

50 y/o M with chest pain

Atul Kumar, MD, MS



Axial Contrast Enhanced CT

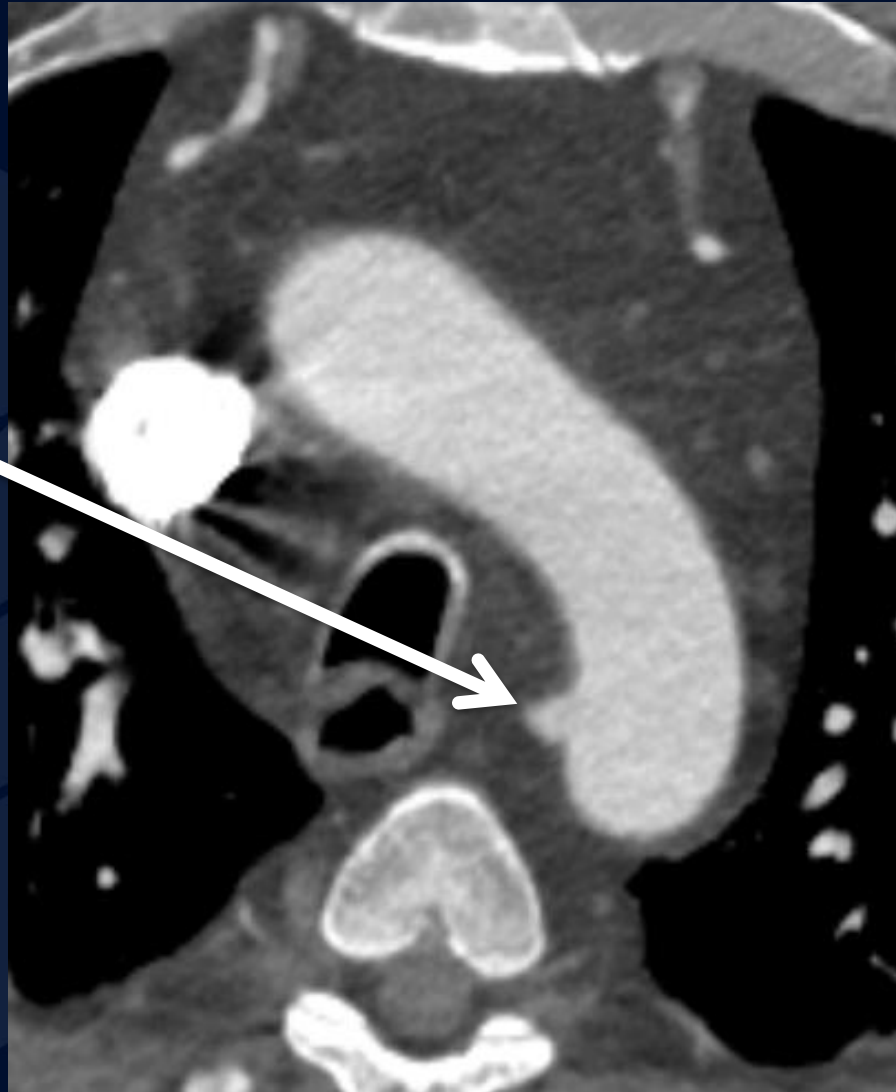


Coronal Contrast
Enhanced CT



Ductus Diverticulum

Ductus
Diverticulum



Axial Contrast Enhanced CT

Ductus
Diverticulum



Coronal Contrast
Enhanced CT

Ductus Diverticulum

- Diverticulum at the anteromedial aspect of the aortic isthmus, where ligamentum arteriosum, ie remnant ductus arteriosus lives
- Incidental finding with most patients asymptomatic
- Smooth out pouching and well defined
- Aorta is often otherwise unremarkable
- If greater than 3 cm, surgical intervention
- Differential
 - Traumatic aortic pseudoaneurysm
 - Penetrating atheromatous ulcer
 - Aortic aneurysm

References

- www.my.statdx.com