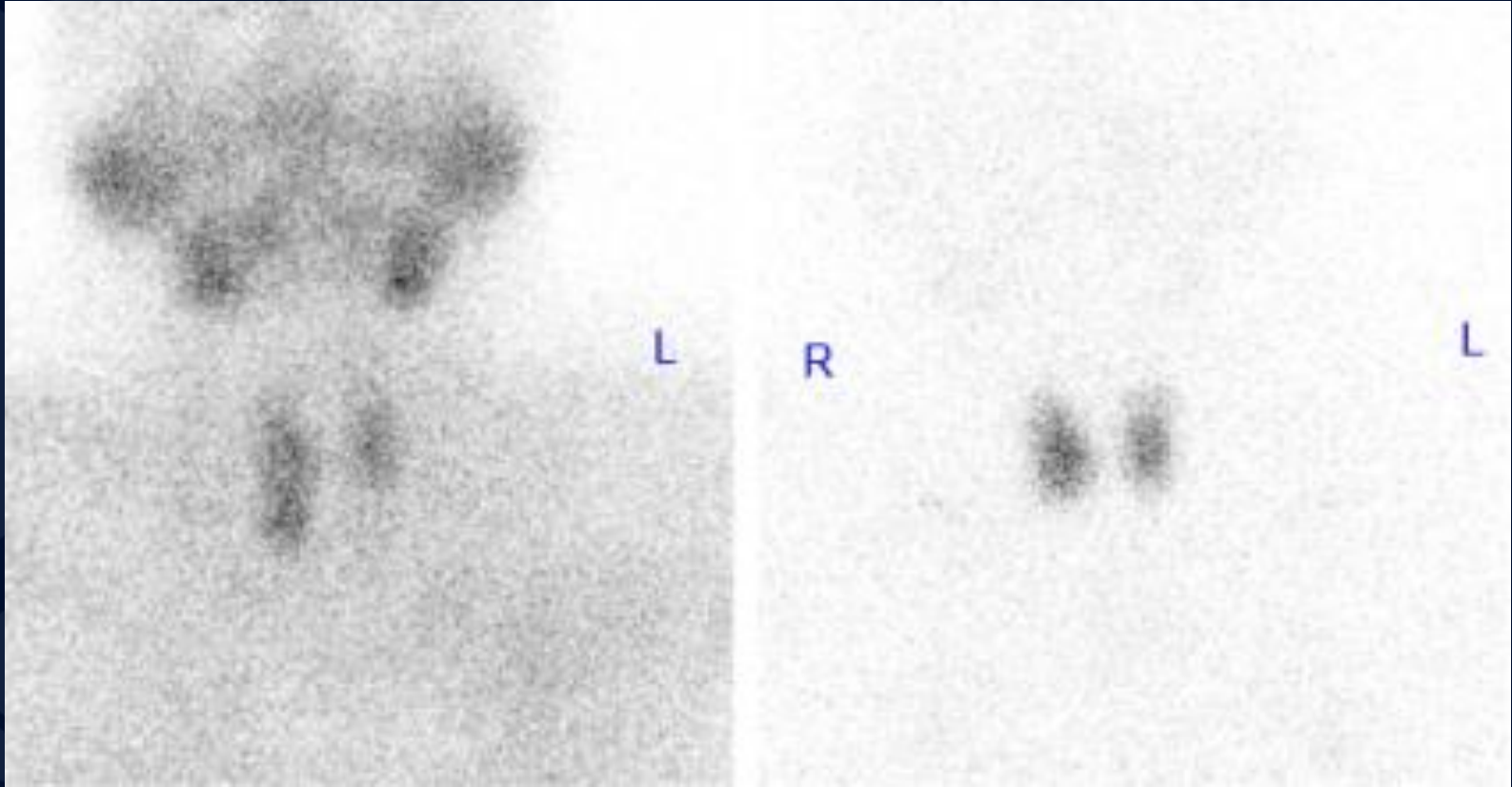


A large, stylized oak leaf graphic in a dark blue color, positioned on the left side of the slide, partially overlapping the text.

# 31 y/o male with hypercalcemia

Atul Kumar, MD, MS

# Planar images of neck



Sestimibi

I-123

A large, stylized oak leaf graphic in a dark blue color, positioned on the left side of the slide. The leaf has a prominent central vein and several smaller veins branching off it. The leaf's edge is serrated.

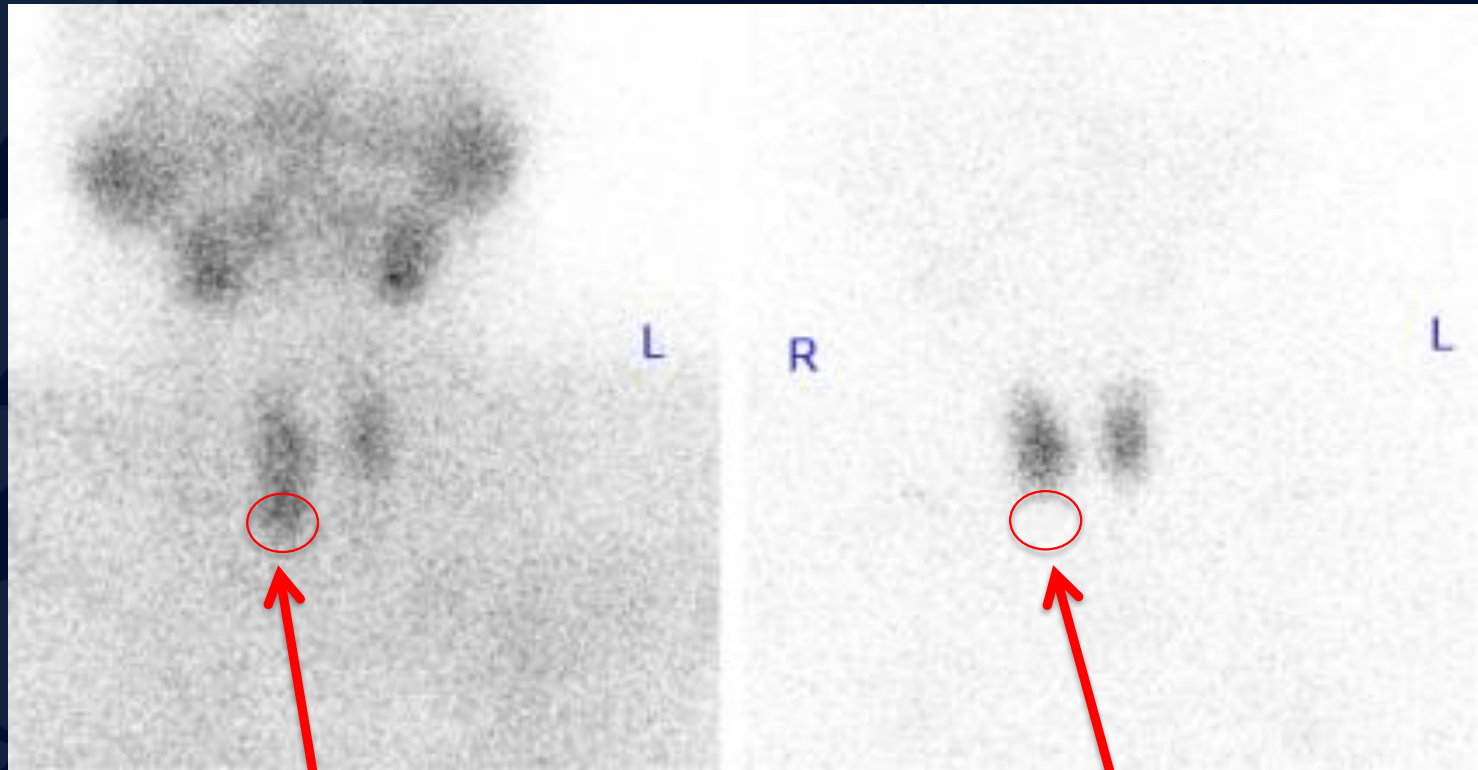
?

# Parathyroid Adenoma

# Planar images of neck

Sestimibi

I-123



Focal radiotracer uptake with Sestimibi

No focal uptake with I-123

# Parathyroid Adenoma

- Enlarged parathyroid gland
- Normal cellular structure
- Causes 75-80% of primary hyperparathyroidism
  - Leads to symptomatic or asymptomatic hypercalcemia
- DDX
  - Thyroid adenoma
  - Parathyroid carcinoma
- Sporadic 95% of time
- Associated with MEN1 or MEN2a 5% of time
- Imaging
  - Ultrasound: can localize approximately 80% of time
  - I-123
    - Taken up by thyroid gland
  - Tc-99m Sestimibi
    - Taken up by thyroid **and** parathyroid tissue
    - Thyroid activity washes out on delayed images
- Treatment: surgery