

33 y/o female with epigastric abdominal pain

Atul Kumar, MD, MS
David Karimeddini, MD

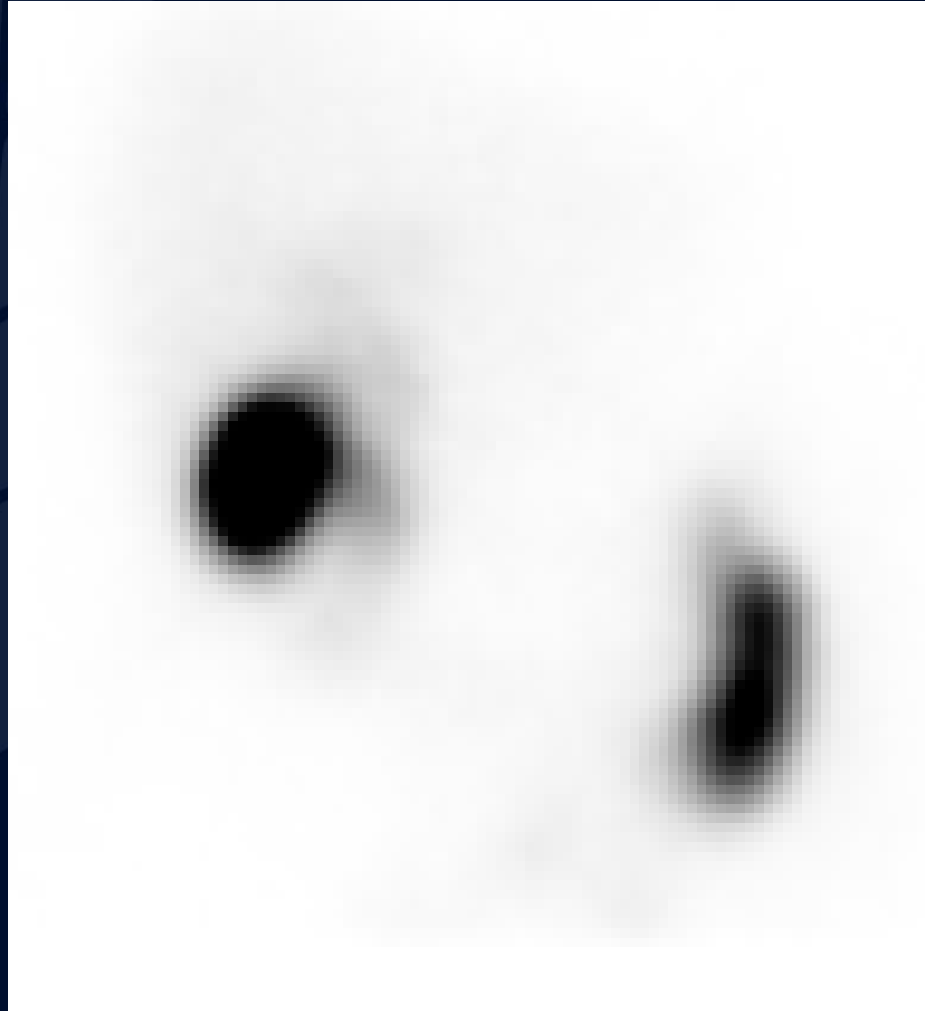
Biliary scintigraphy at 15 min s/p radiotracer injection



Biliary scintigraphy at 39 min s/p radiotracer injection



Biliary scintigraphy at 60 min s/p radiotracer injection



Biliary scintigraphy at 60 min s/p CCK infusion



A large, stylized oak leaf graphic in a dark blue color, positioned on the left side of the slide. It features detailed vein patterns and a lobed edge.

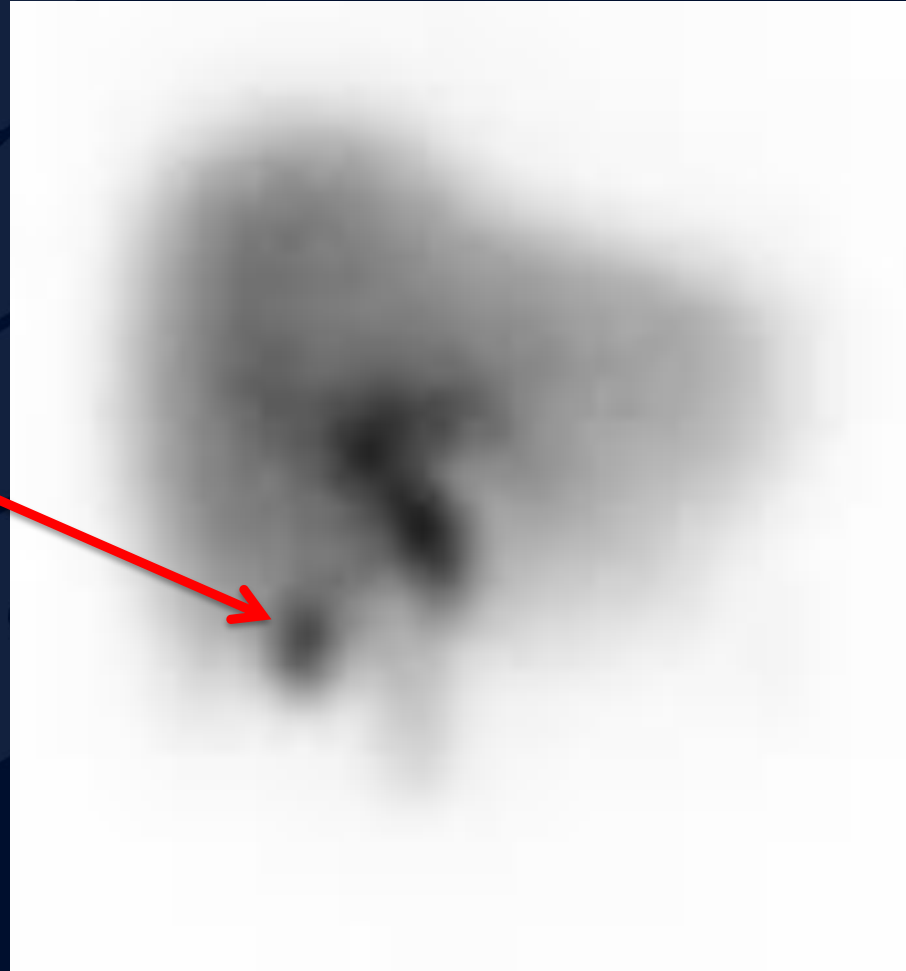
?

The background of the slide features a dark blue color with a subtle, stylized pattern of oak leaves in a slightly lighter shade of blue, primarily on the left side.

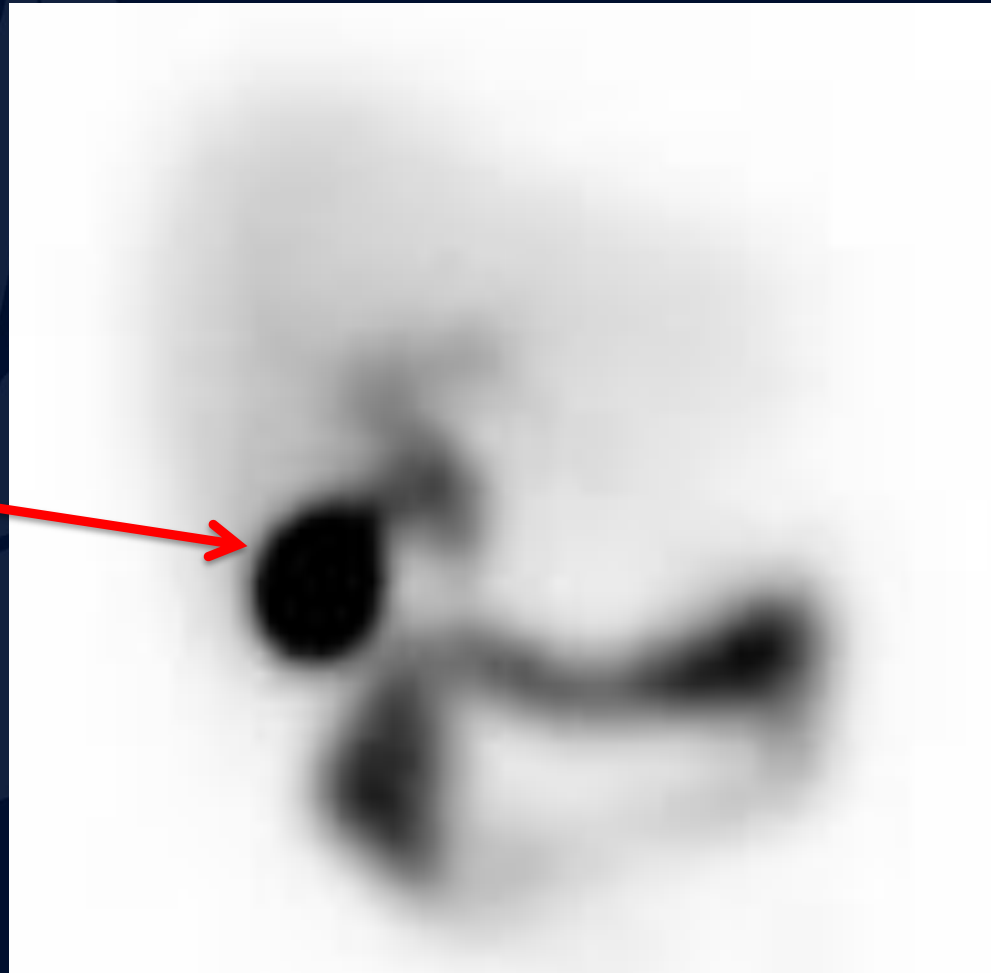
Biliary Dyskinesia

Biliary scintigraphy at 15 min s/p radiotracer injection

Gallbladder initially visualized

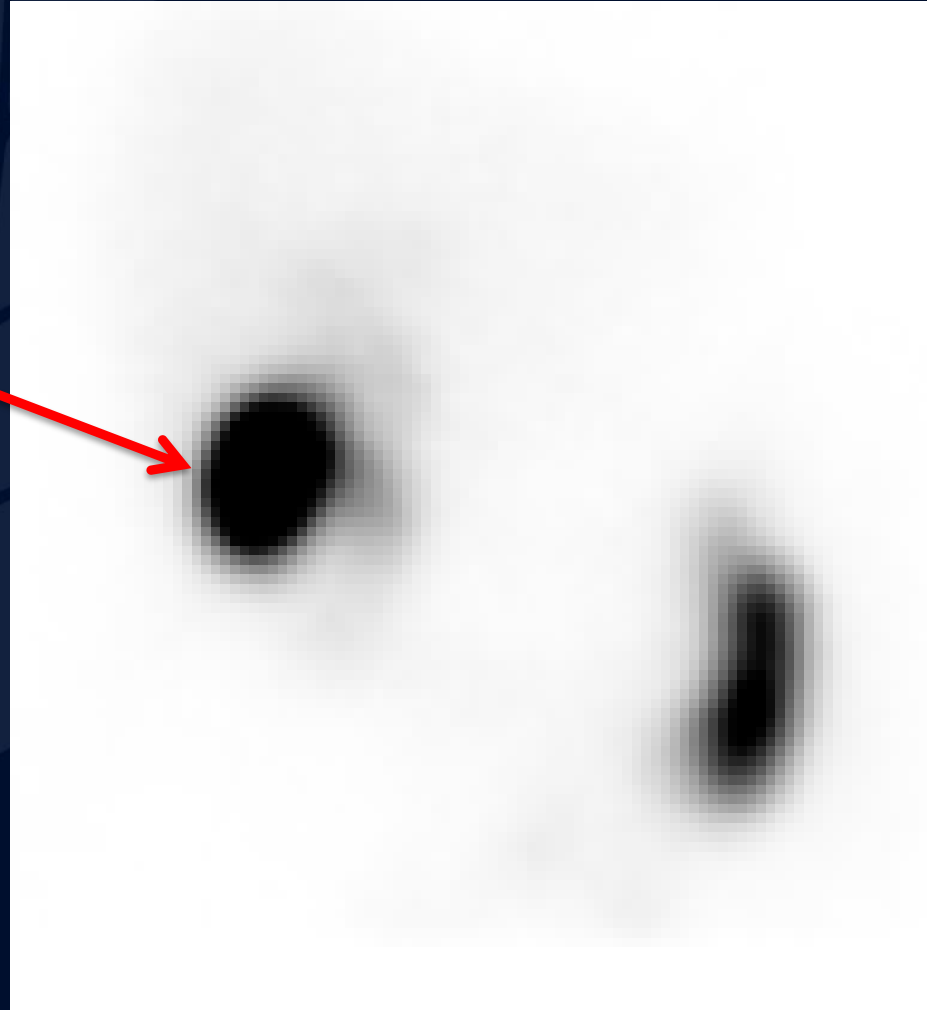


Biliary scintigraphy at 39 min s/p radiotracer injection



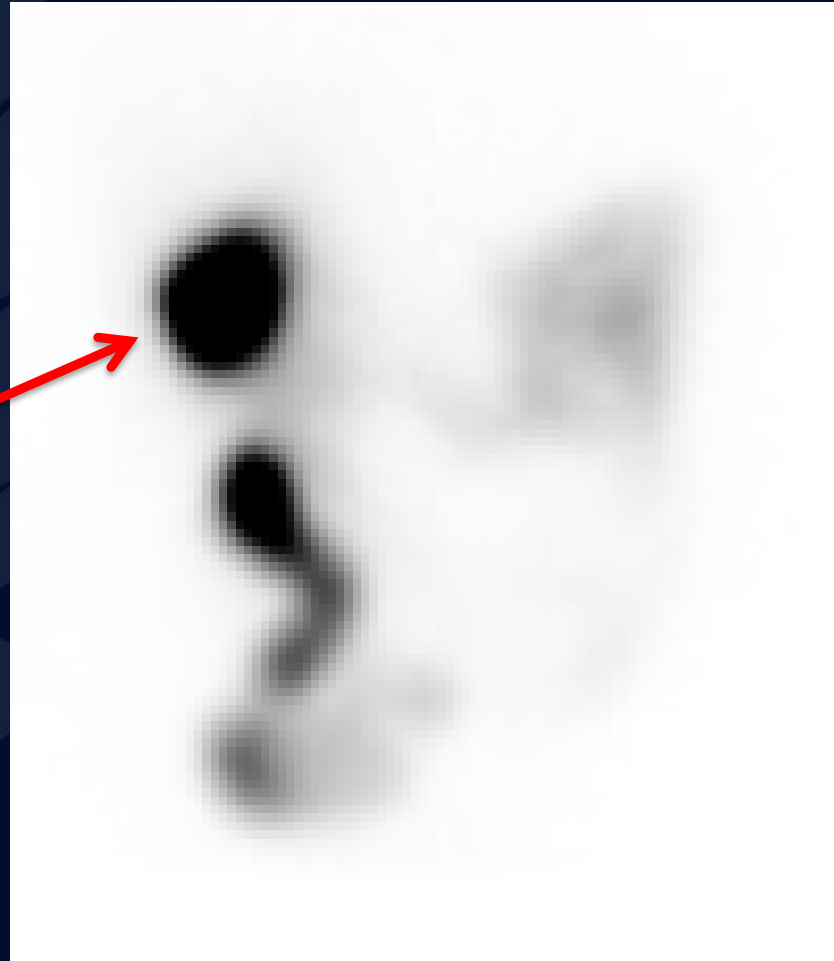
Gallbladder with normal filling

Biliary scintigraphy at 60 min s/p radiotracer injection



Gallbladder with normal filling

Biliary scintigraphy at 60 min s/p CCK infusion



Ejection
fraction of
16% after
CCK infusion

Biliary Dyskinesia

- AKA Gallbladder Dysfunction, Functional Gallbladder Disorder, Gallbladder Dysmotility, and Cystic Duct Syndrome
- Right upper quadrant/biliary pain without evidence of cholelithiasis or sludge
- Diagnosis of exclusion
- Ultrasound exam is first line evaluation
 - Typically unremarkable
 - May show gallbladder inflammation in the absence of stones
- Biliary scintigraphy (HIDA scan) to assess ejection fraction
 - 4-6 mCi Tc-99m mebrofenin
 - 0.02 mcg/kg CCK infused over 20-30 min
 - EF of < 35% is abnormal (up to 40% depending on institution protocol)
- Treatment is surgery