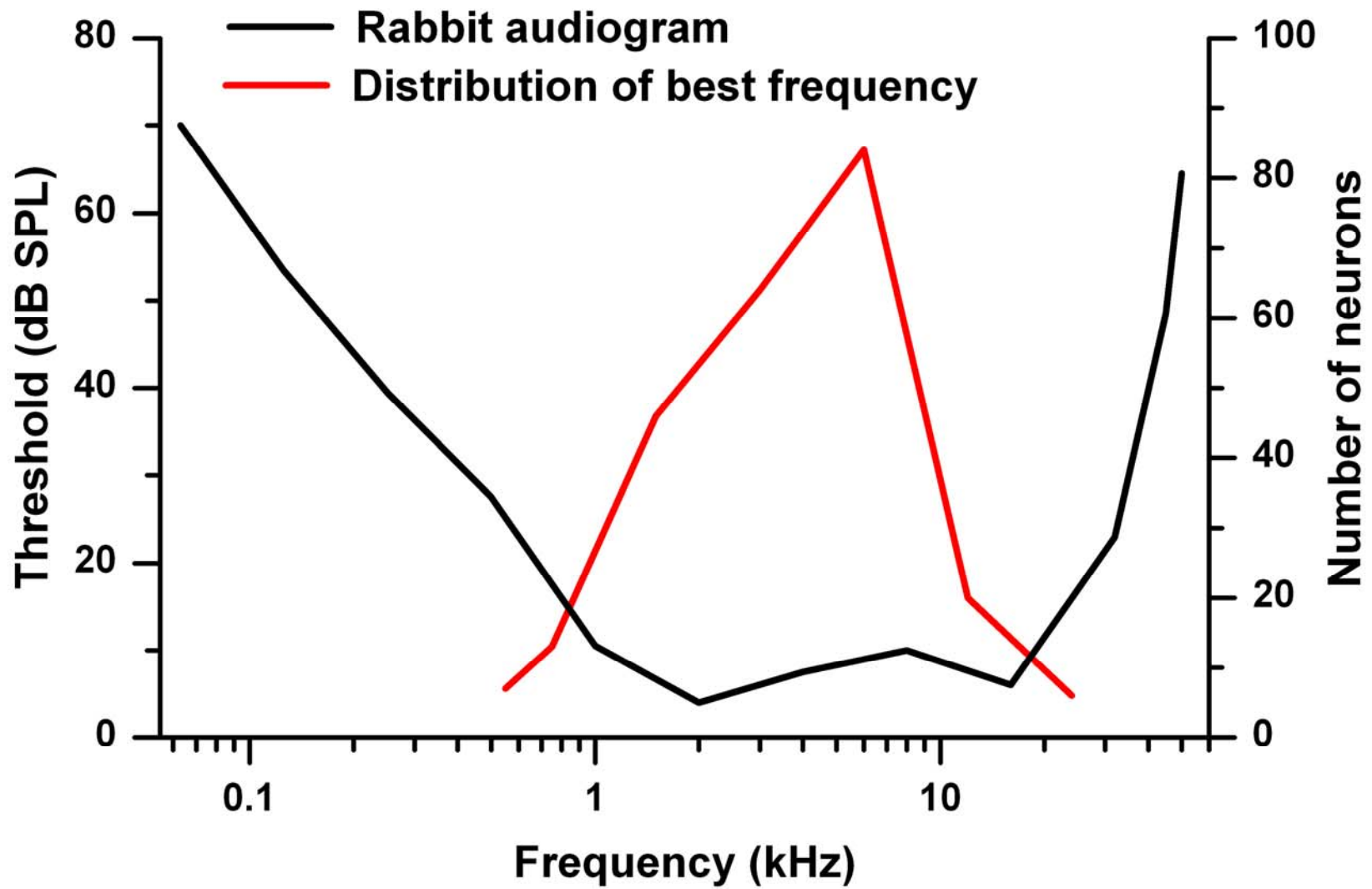
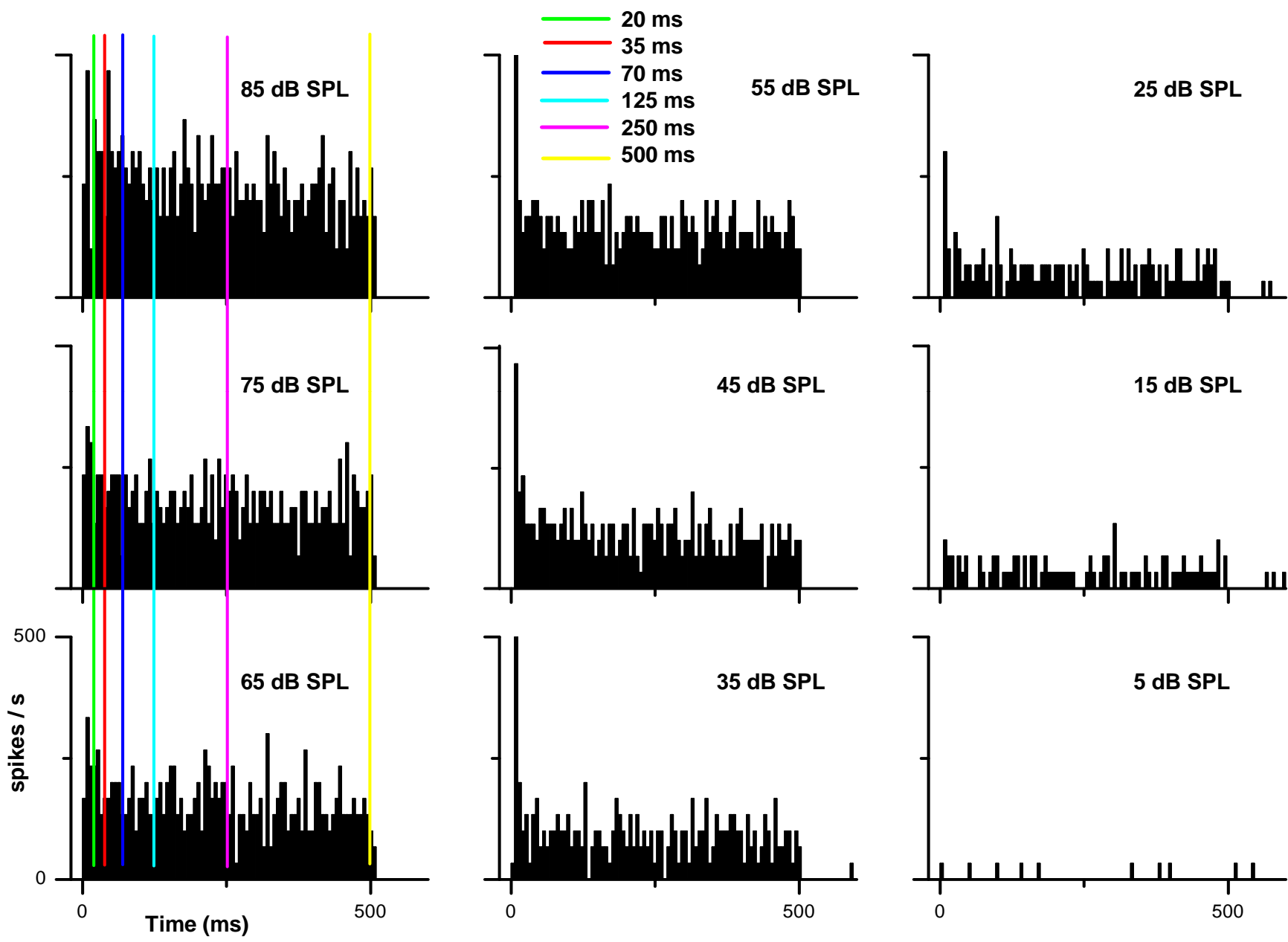
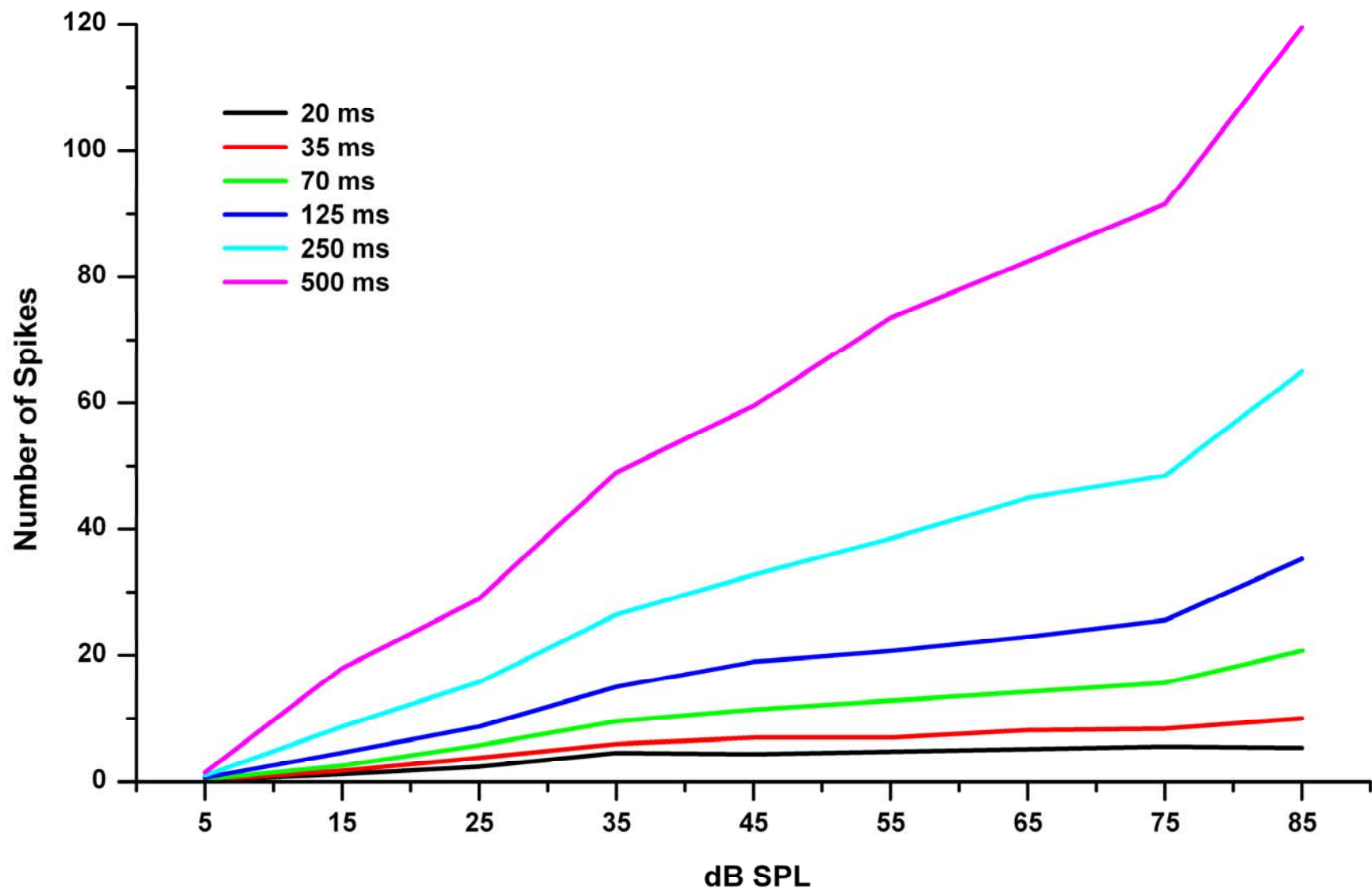


Neural Correlates of Tonal Loudness and Duration

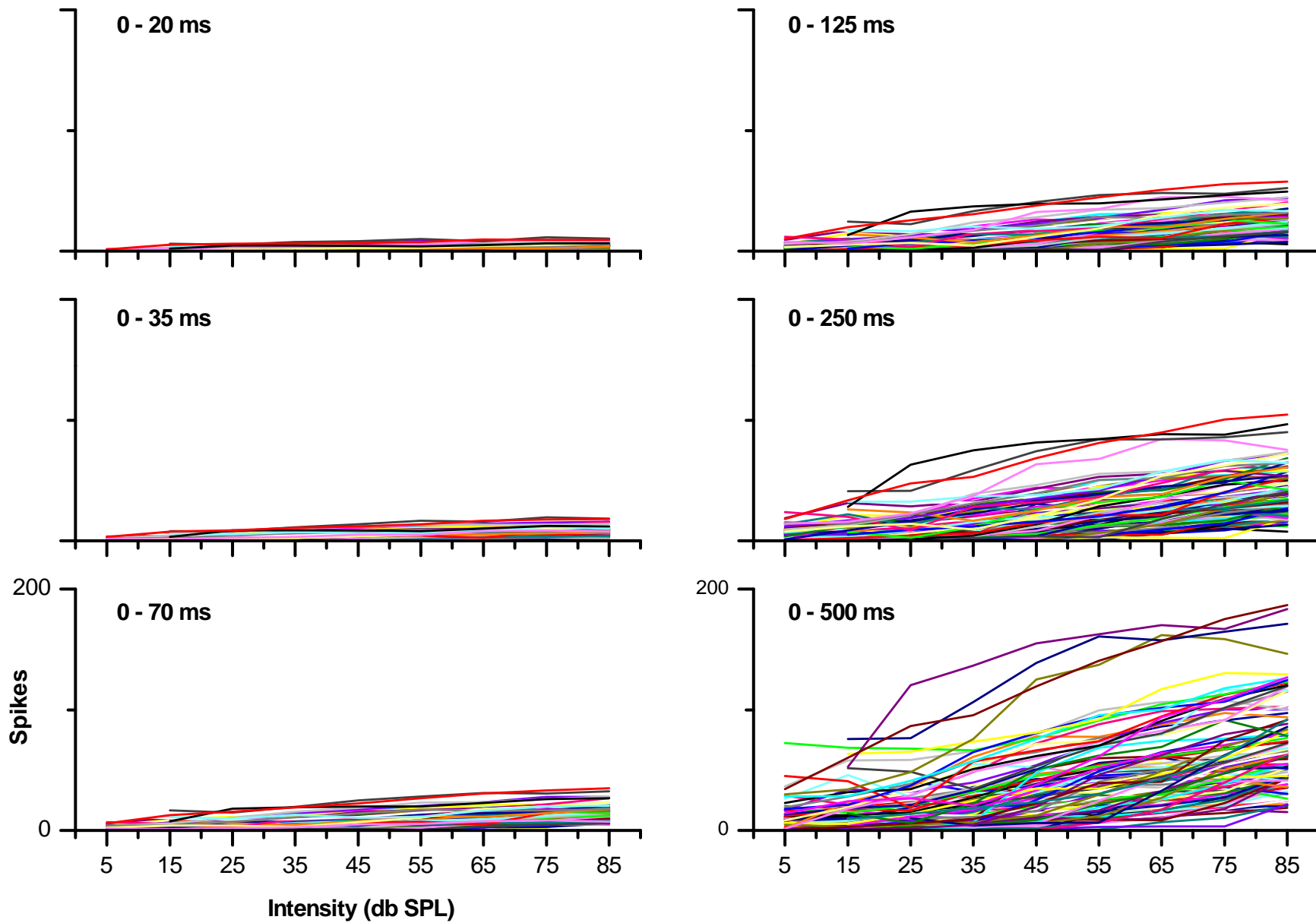
A spontaneous and at times a combustible collaboration



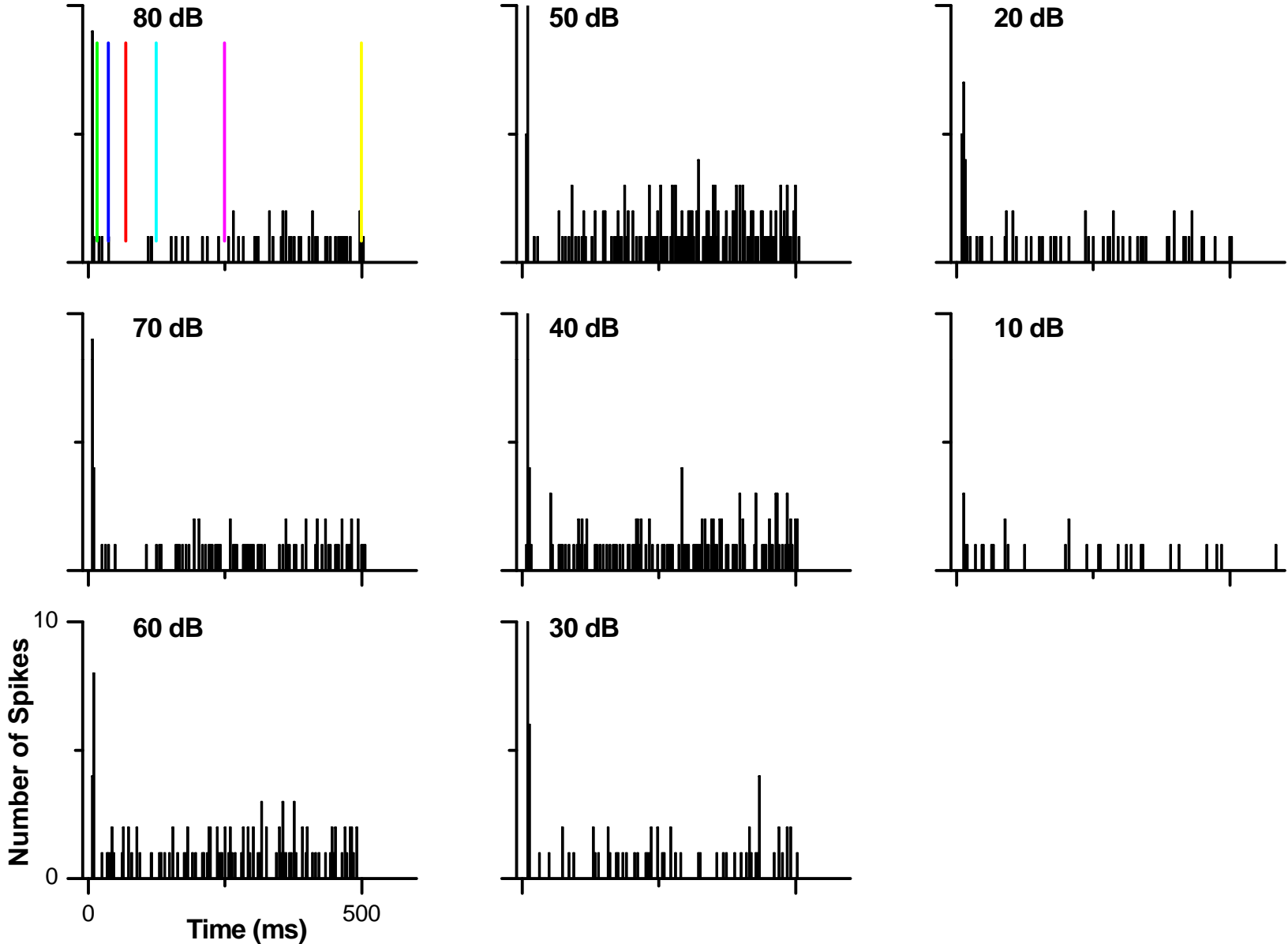


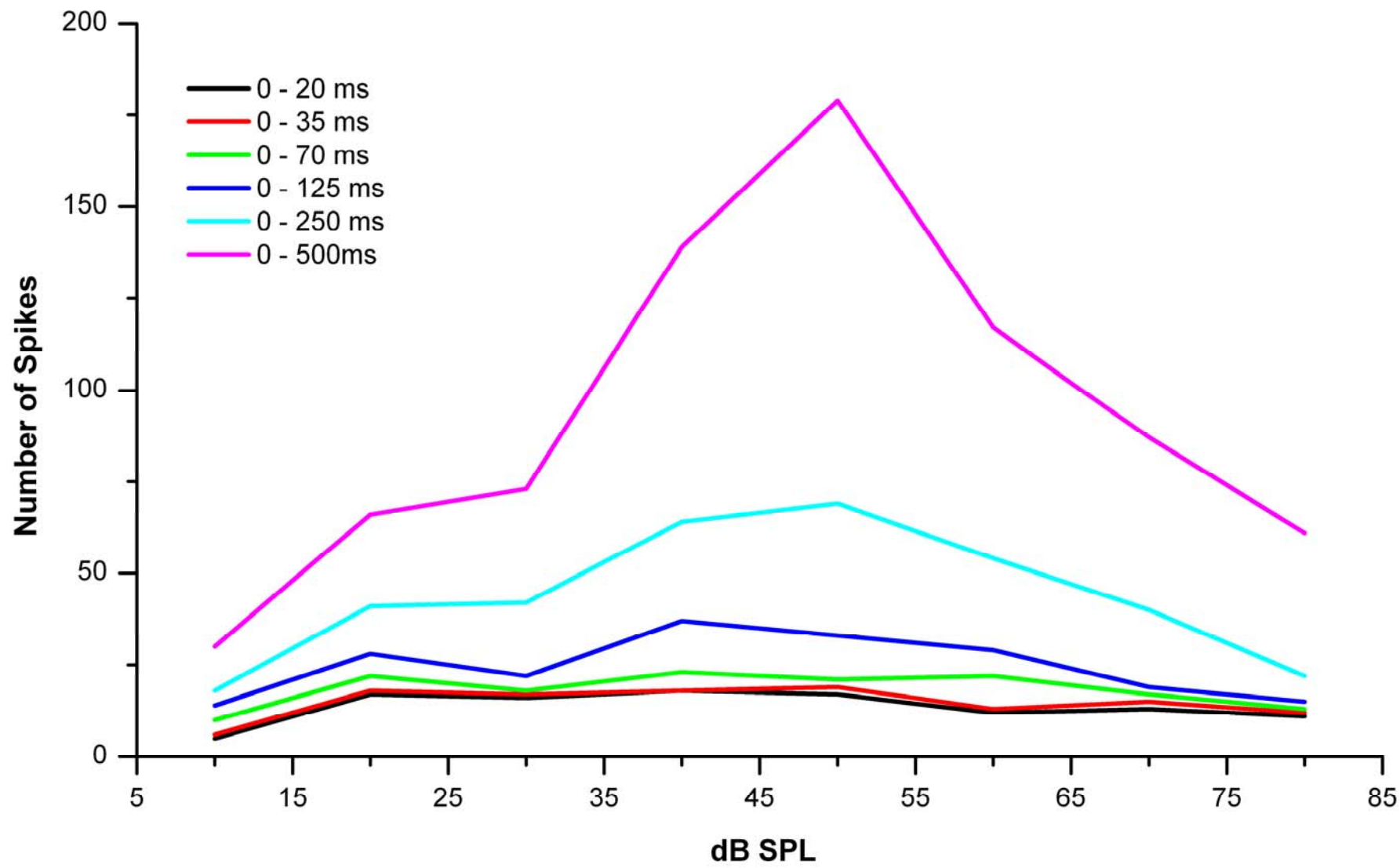


Monotonic Rate-Level functions

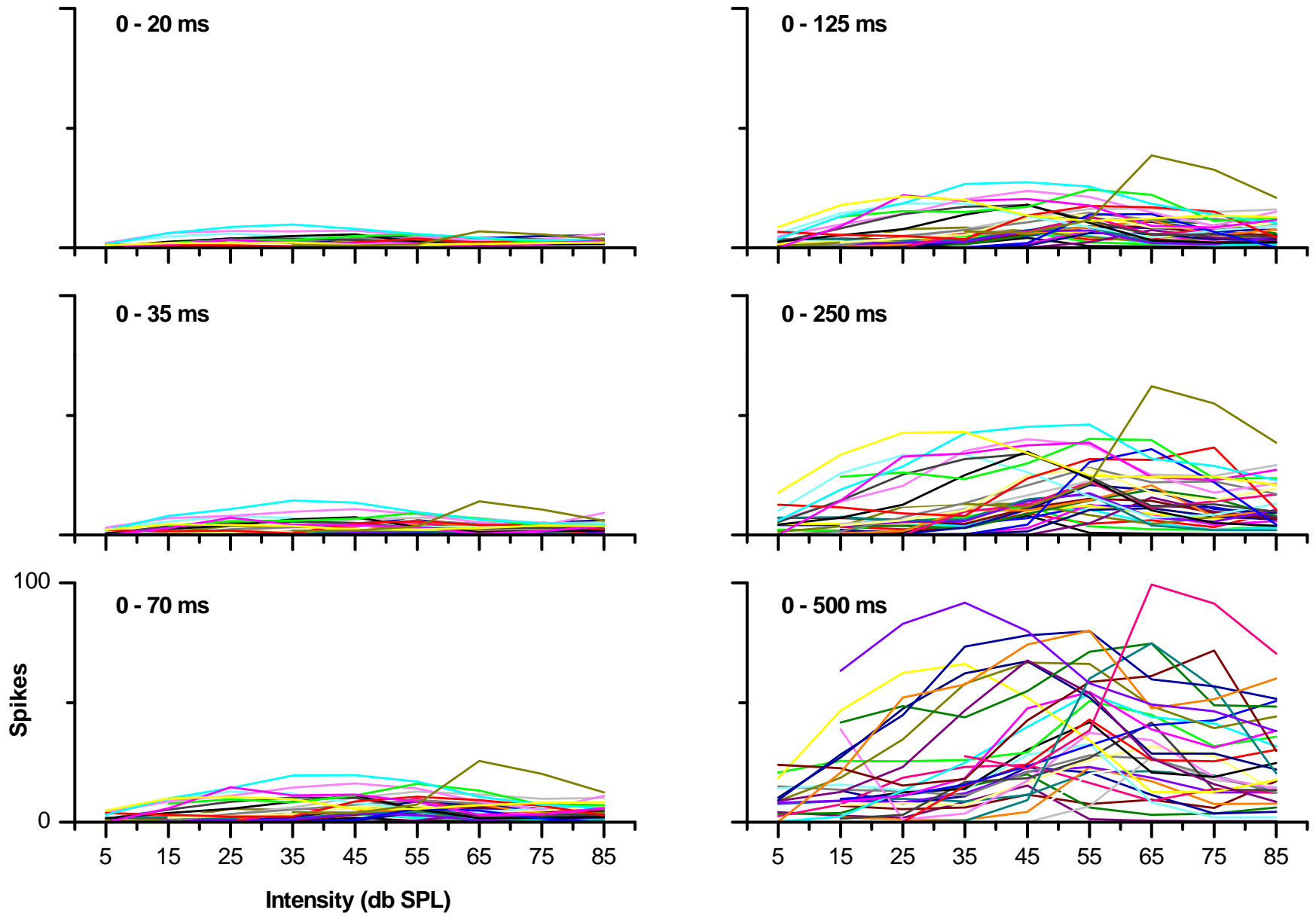


Neuron with a Non-Monotonic Spike-Level Function

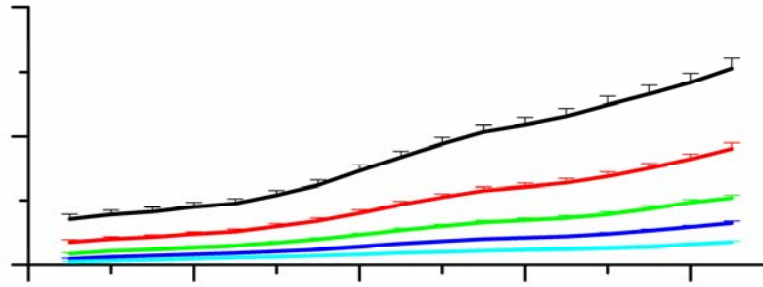




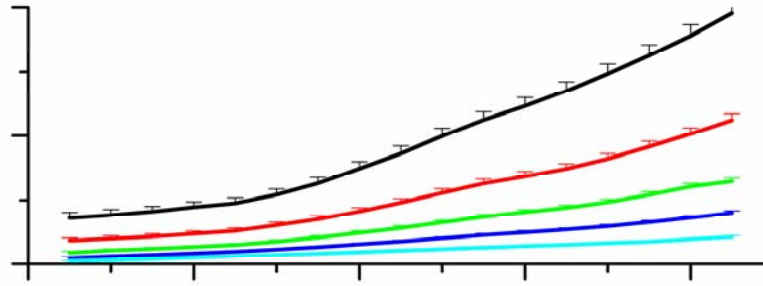
Non-monotonic Rate-level Functions



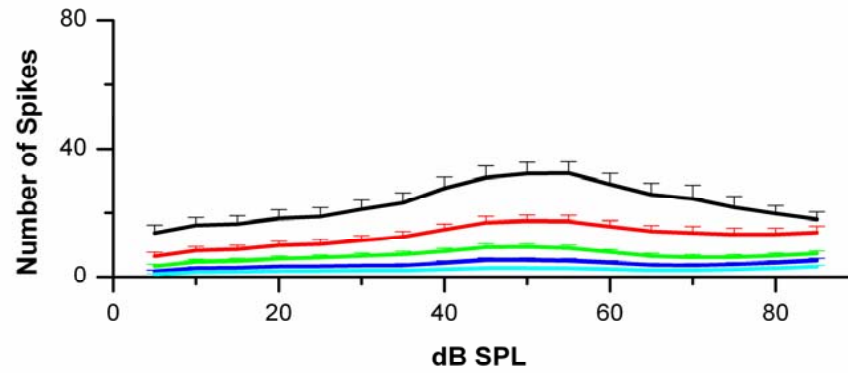
Monotonic, saturating & non-monotonic



Monotonic & saturating

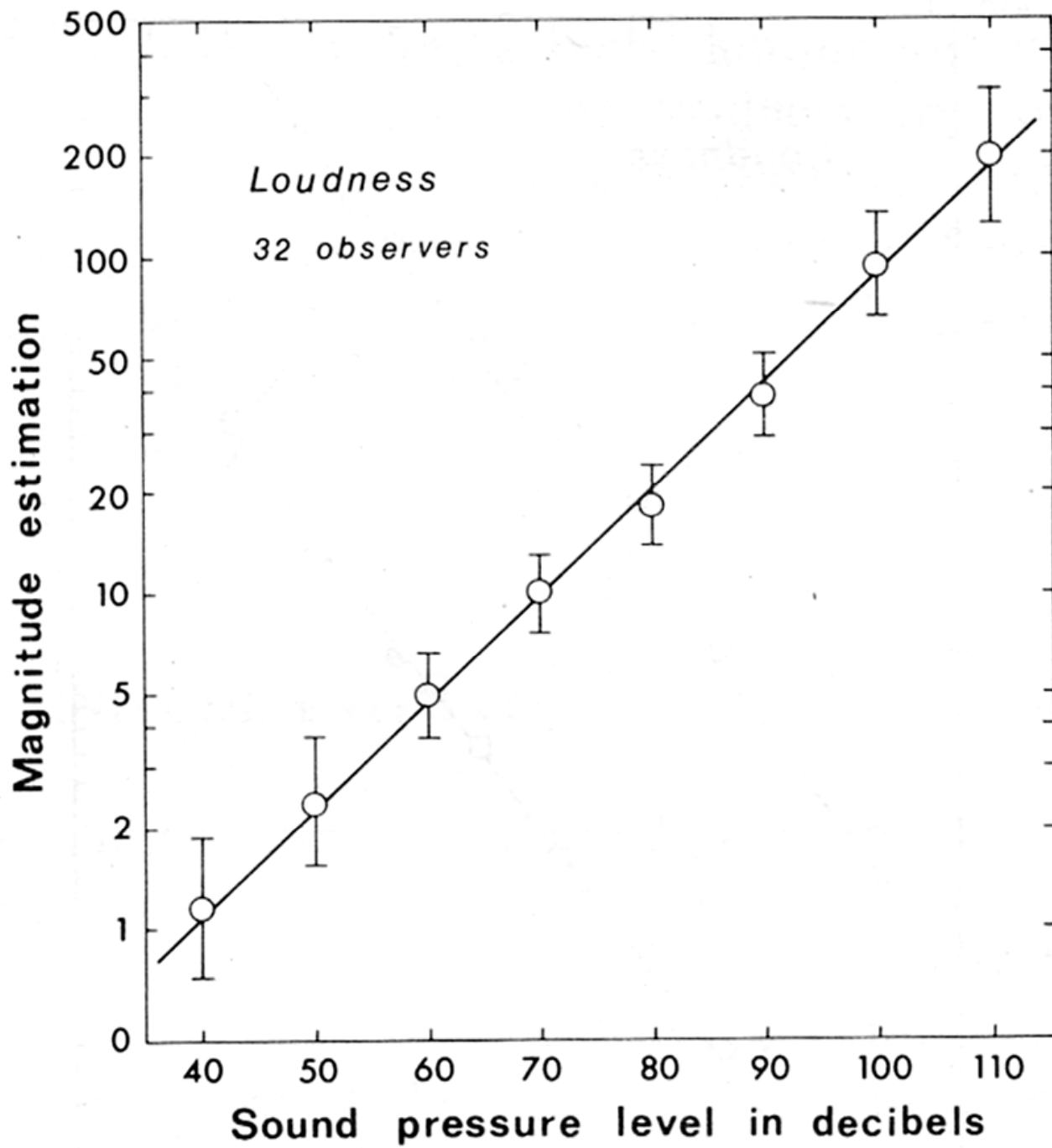


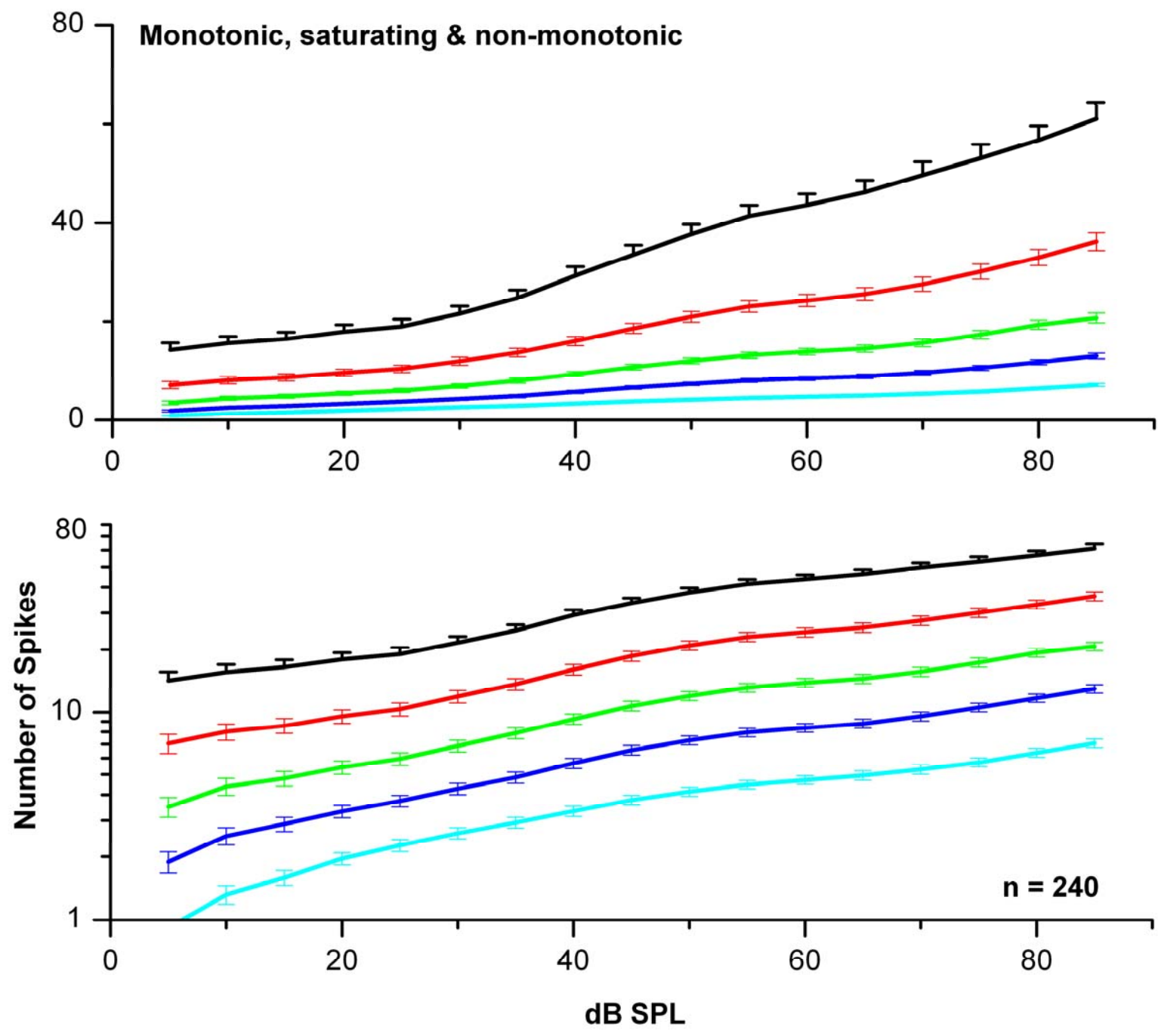
Non-monotonic

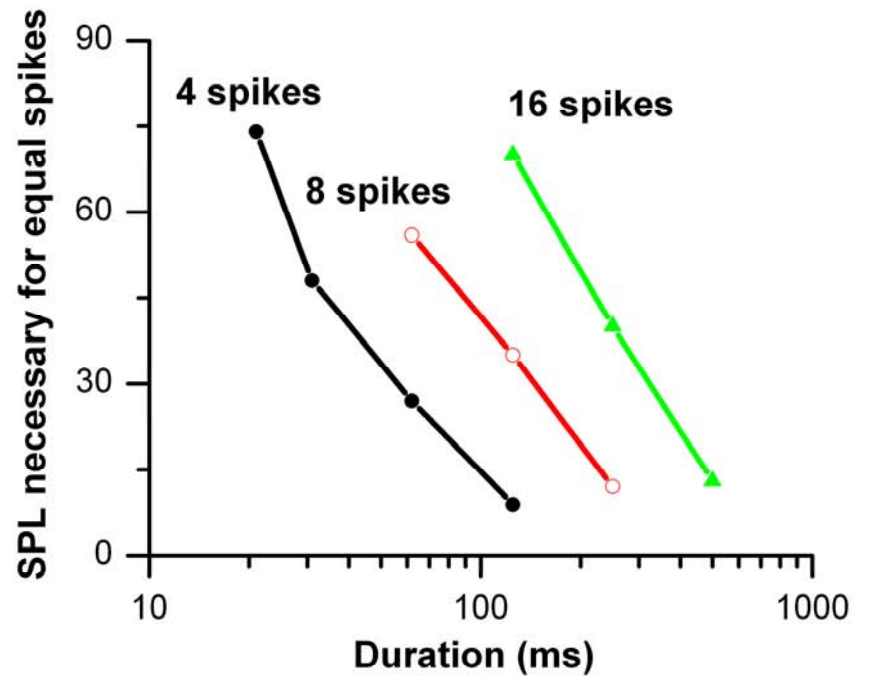
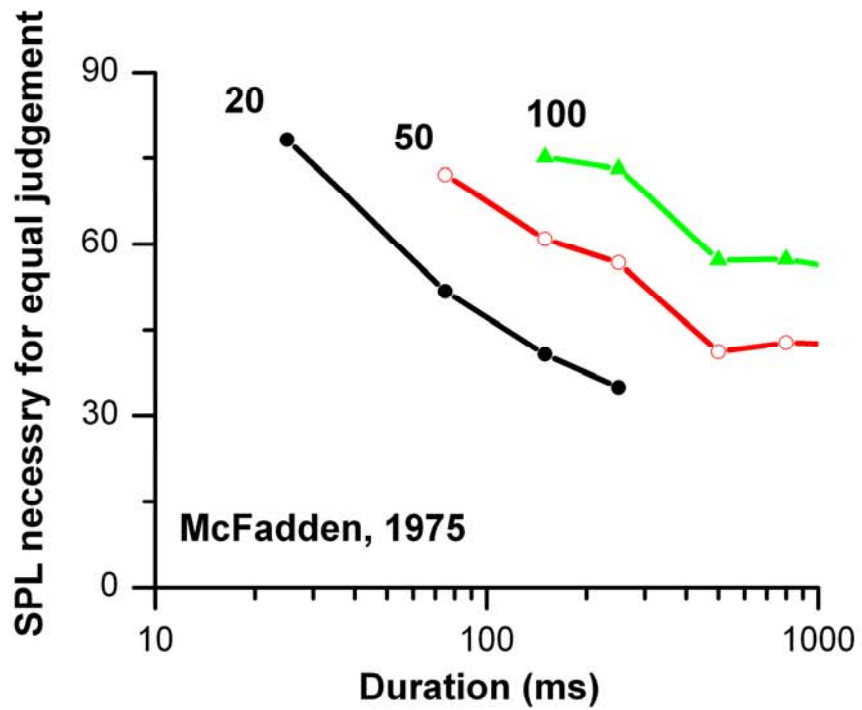


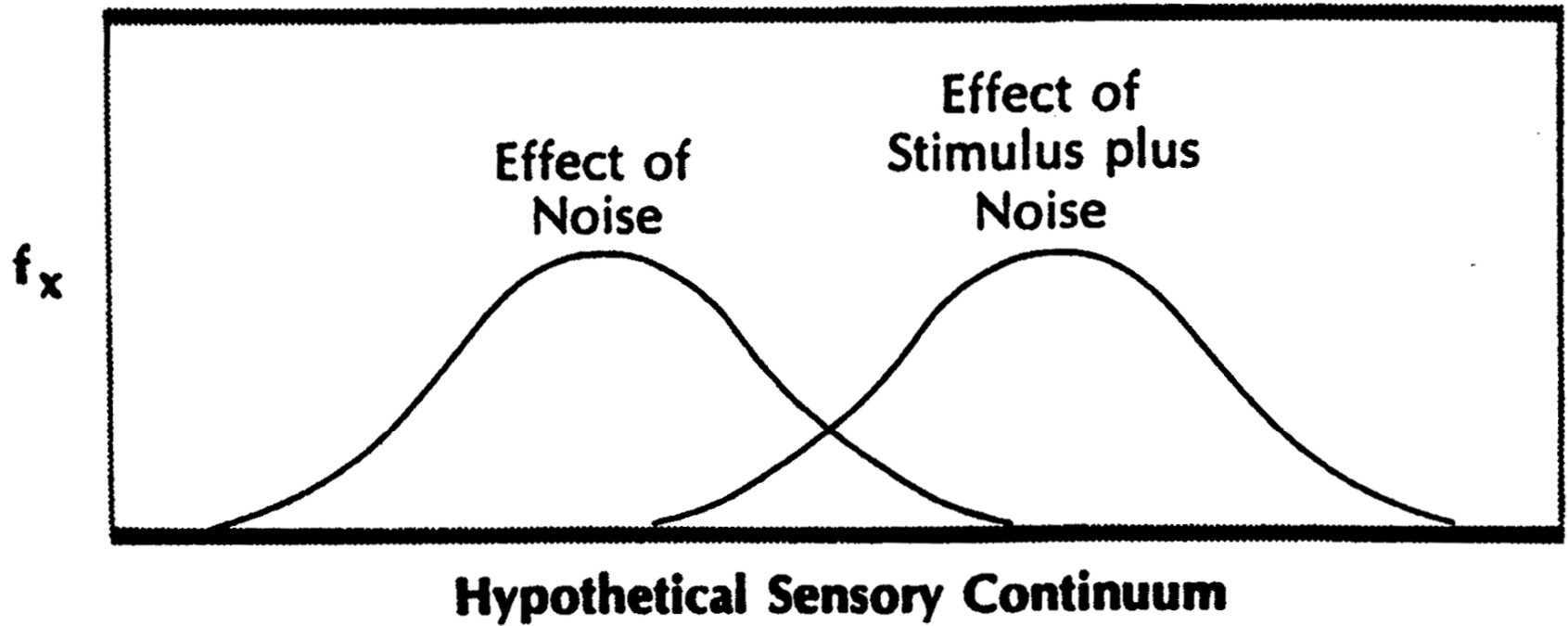
Recently invented procedures have shown that whenever the stimulus increases, the intensity of the sensation grows in accordance with a common basic principle...equal stimulus ratios produce equal sensation ratios.

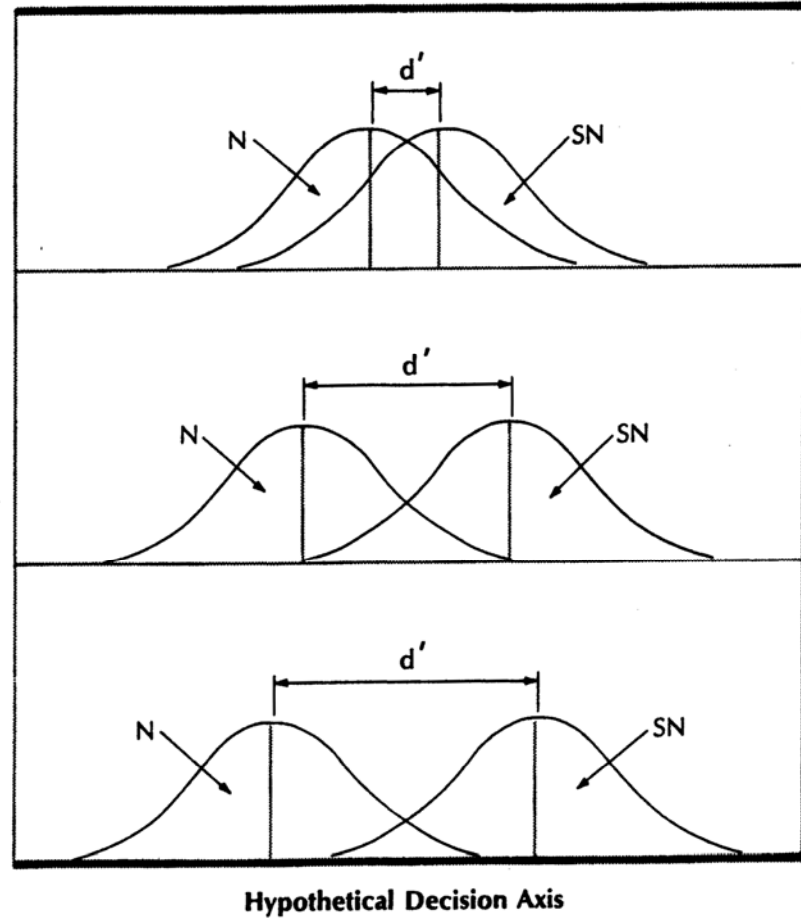
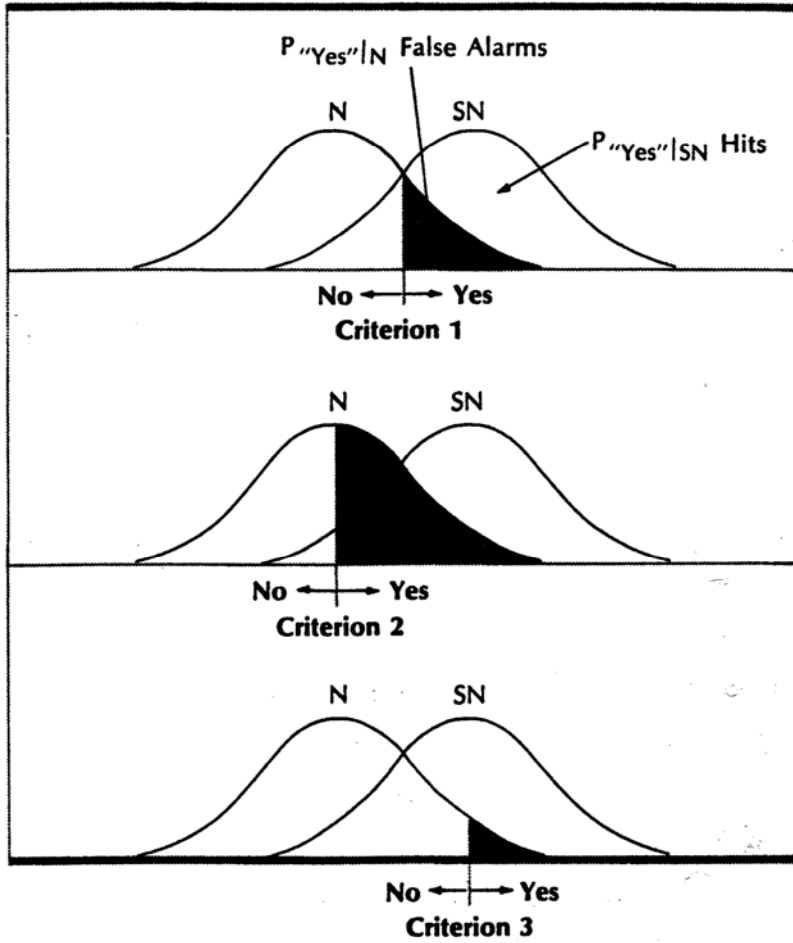
S.S. Stevens, 1974, chapter 1, page 1, paragraph 1.



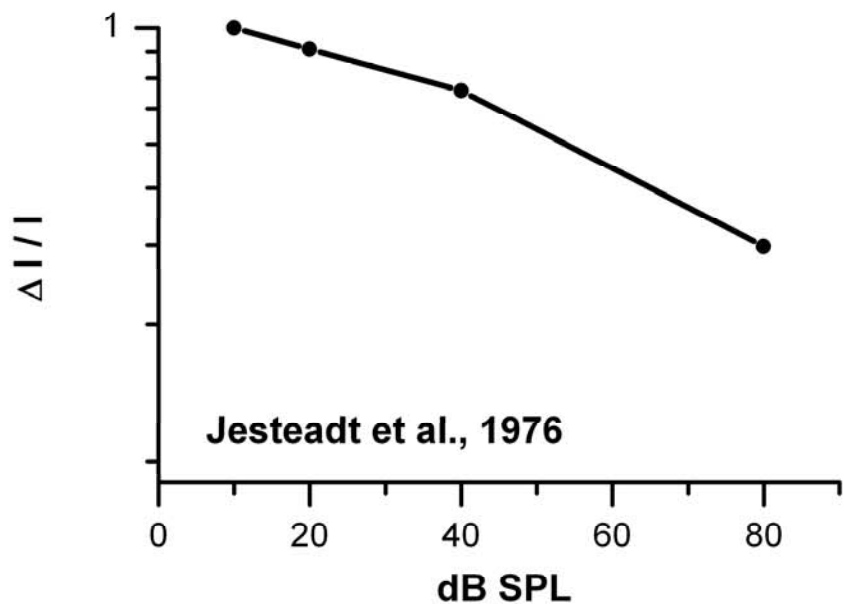




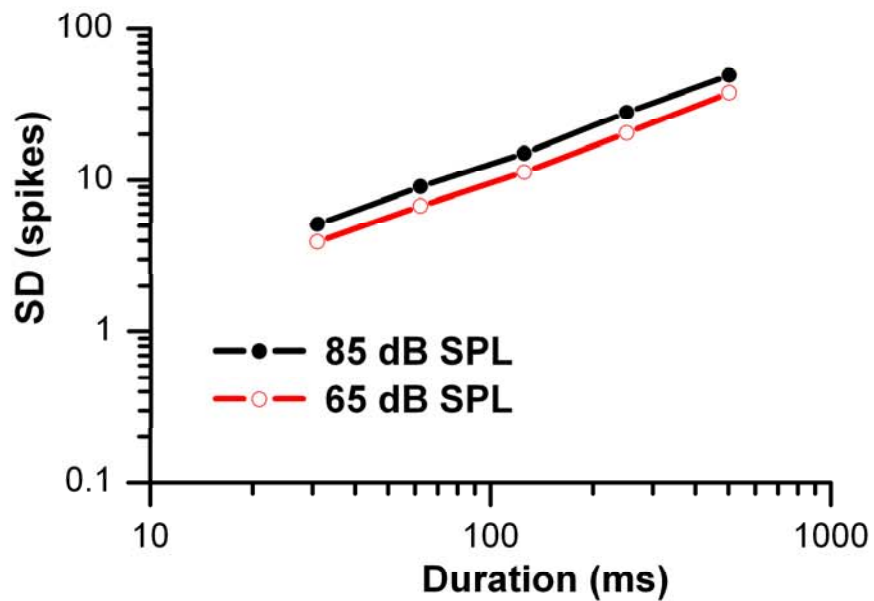
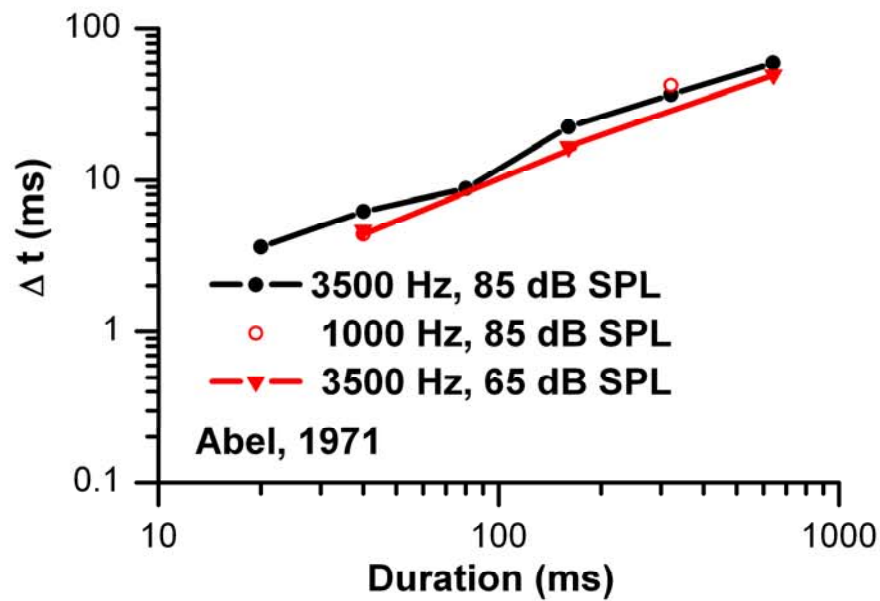
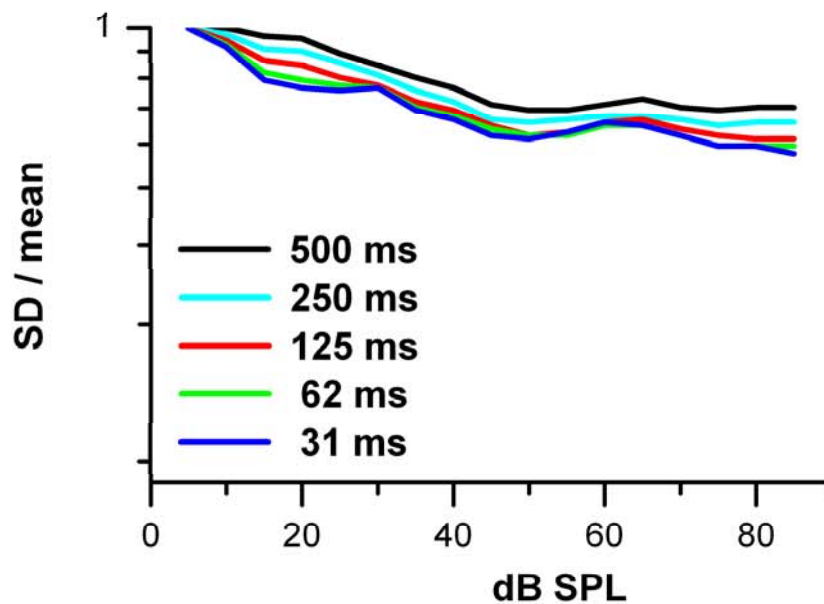




Psychophysics



Neural



Much to our surprise,
we are still together