

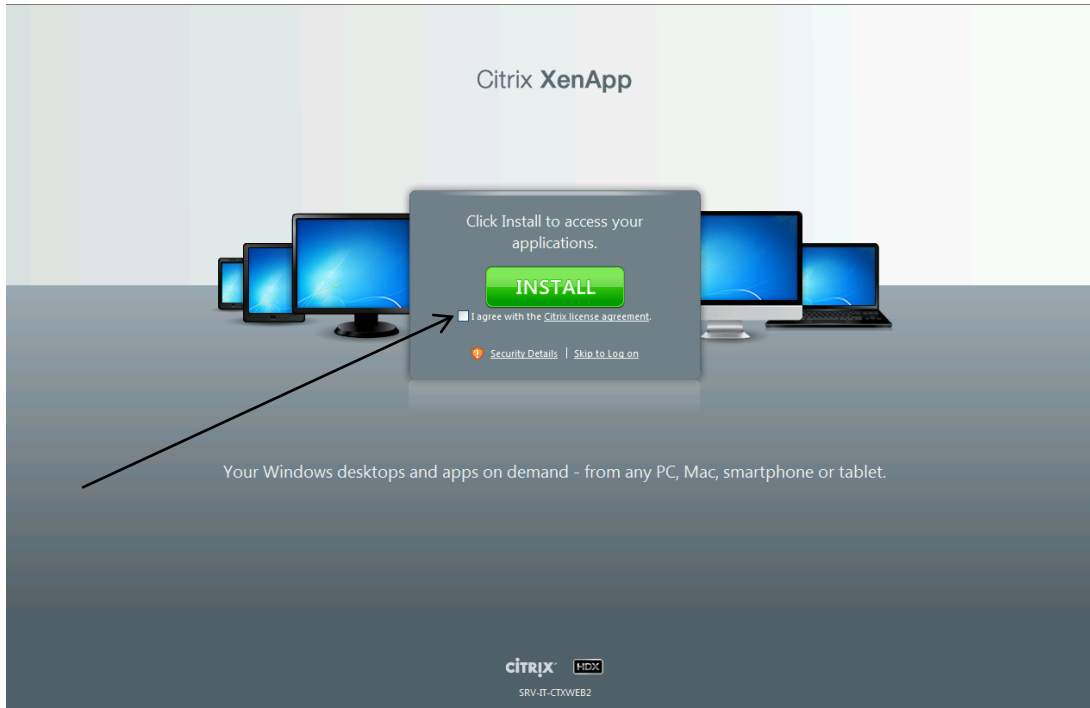
# UCONN Health Center Remote Access Instructions

1. Please click on the following URL: <https://remote.uchc.edu>. One of the following windows will appear:

If you see this window, the Citrix client is installed. .You can login and launch whichever app you need to launch.

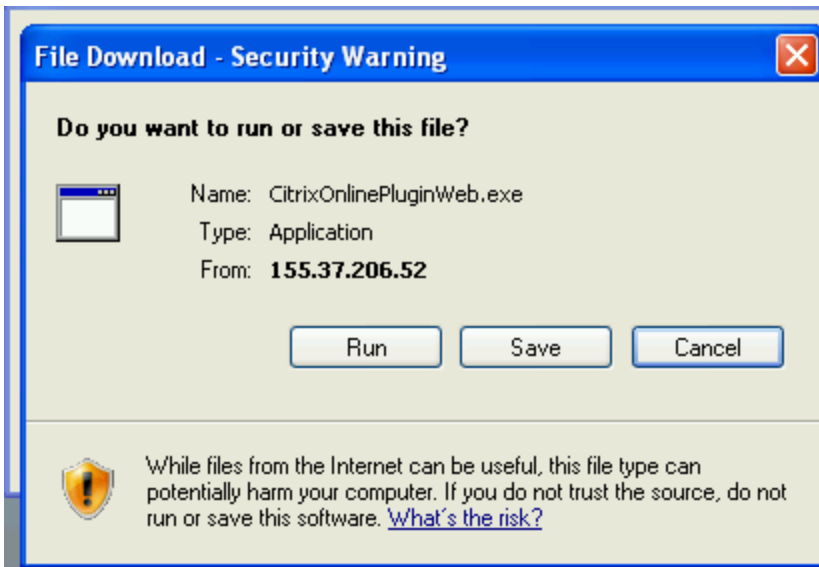


If you see this window, the Citrix client is not installed, please proceed to step 2.



2. Click the 'I agree' box and then click Install.

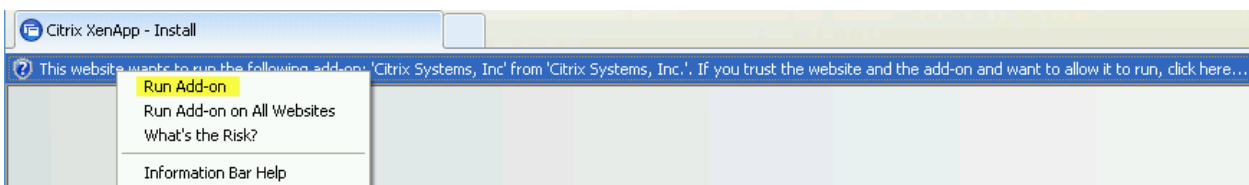
3. Click Run.



4. Click Run again.



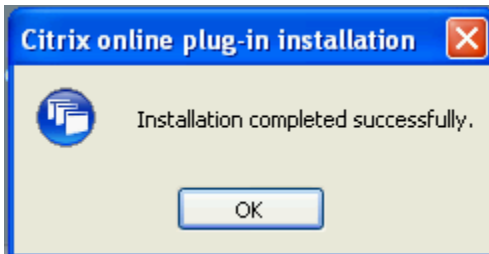
5. The Internet Explorer Information Bar will appear at the top of the window. Click it and choose Run Add-on.



6. Click Run once again.



7. Click OK. This may be hidden behind the main windows.



8. The Citrix client installation is now finished and you can login.



## 9. Logged in and available applications.

The screenshot displays the UConn Health Center application server interface. At the top, a dark blue header contains a search bar, a user profile for 'mshannon', and navigation links for Messages, Settings, and Log Off. The UConn Health Center logo is prominently displayed on the right side of the header. Below the header, a navigation bar offers 'Applications', 'Desktops', and 'Content' options. The main content area features a 'Main' section with a 'Select view:' dropdown menu. A grid of application icons is presented, including Access Management Console, CFAR, Citrix AppCenter, Citrix Remote Desktop Manager, DameWare NT Utilities, DameWare Remote Control, Granite Enterprise, Health Center Express, IDX, IPMS, KeePass, LUMINIS - Banner Remote Access, Netaccess - LCR - POE, OAS Gold, Perfusion, Remote Desktop, Track It Technician Client, UCHC Directory, UCHC Saba Learning Center, and VisionApp. A hint at the bottom of the grid explains the 'Select view:' control. The Citrix logo and server identifier 'SRV-IT-CTXWEB2' are visible at the bottom of the interface. The browser's address bar shows 'Internet' and a zoom level of '100%'.

Search Logged on as: mshannon Messages Settings Log Off

UCONN HEALTH CENTER

Applications Desktops Content

To log in to the UCHC Application Server, enter the credentials required and then click Log On.  
If you do not know your login information, please contact the Help Desk at (860)-679-4400

Main Select view: ▾

- Access Management Console
- CFAR
- Citrix AppCenter
- Citrix Remote Desktop Manager
- DameWare NT Utilities
- DameWare Remote Control
- Granite Enterprise
- Health Center Express
- IDX
- IPMS
- KeePass
- LUMINIS - Banner Remote Access
- Netaccess - LCR - POE
- OAS Gold
- Perfusion
- Remote Desktop
- Track It Technician Client
- UCHC Directory
- UCHC Saba Learning Center
- VisionApp

Hint: You can view your resources in several different ways. Use the Select view control to change the way that your resources are displayed. ✕

CITRIX  
SRV-IT-CTXWEB2

Internet 100%