

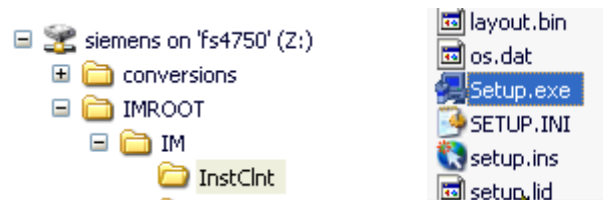
Implementation Methodology Software Installation Guide


Note: MS Project is a requirement for IM - If needed, download/install [MS Project 2000](#))

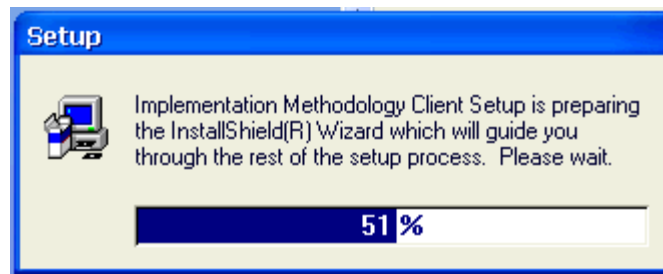
- [IBM Books Download](#)
- [IE links to OAS/Gold](#)

Note: When mapping the drive, if you receive a message that Access is denied, please call the Help Desk at x4400.

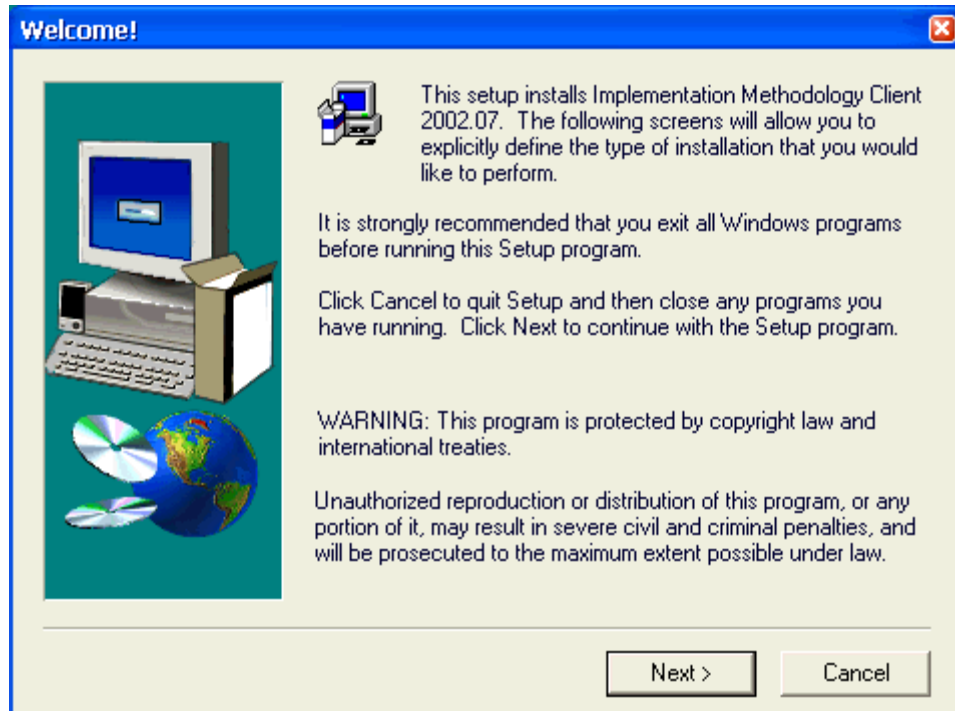
- Close all programs, including Microsoft Office Shortcut bar.
- Map a drive to **\\fs4750\siemens** Make sure **Reconnect at Logon** is checked.
- From the drive just mapped, locate **\\IMROOT\IM\InstClnt** Then locate Setup.exe in the folder.



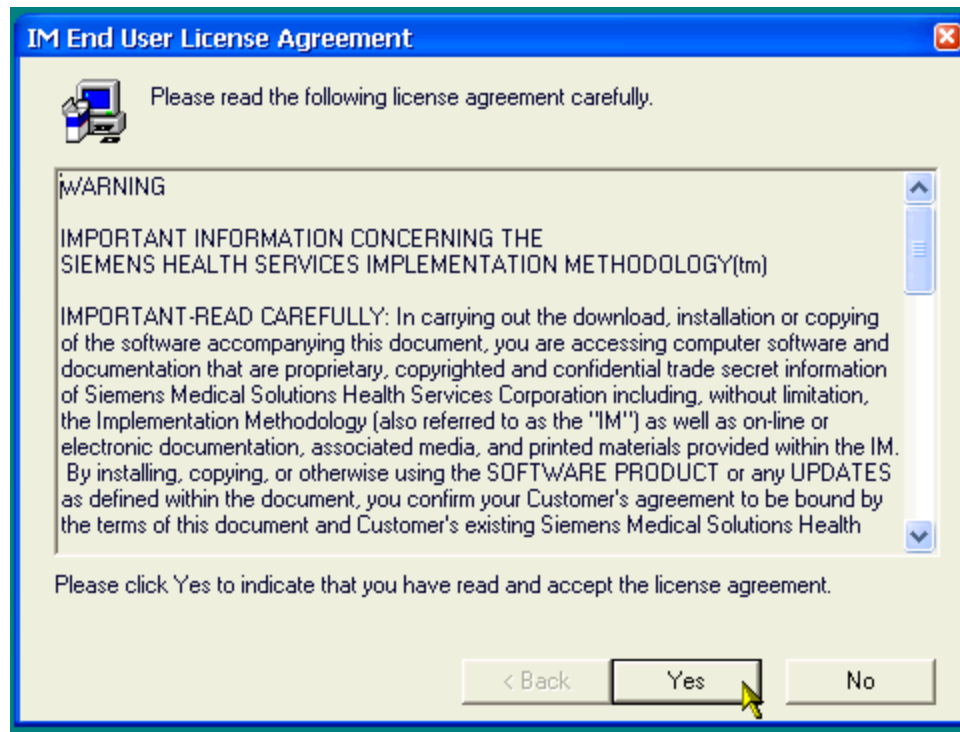
- Click on **setup.exe** to launch. 
- IM Client Setup prepares the Install Shield Wizard



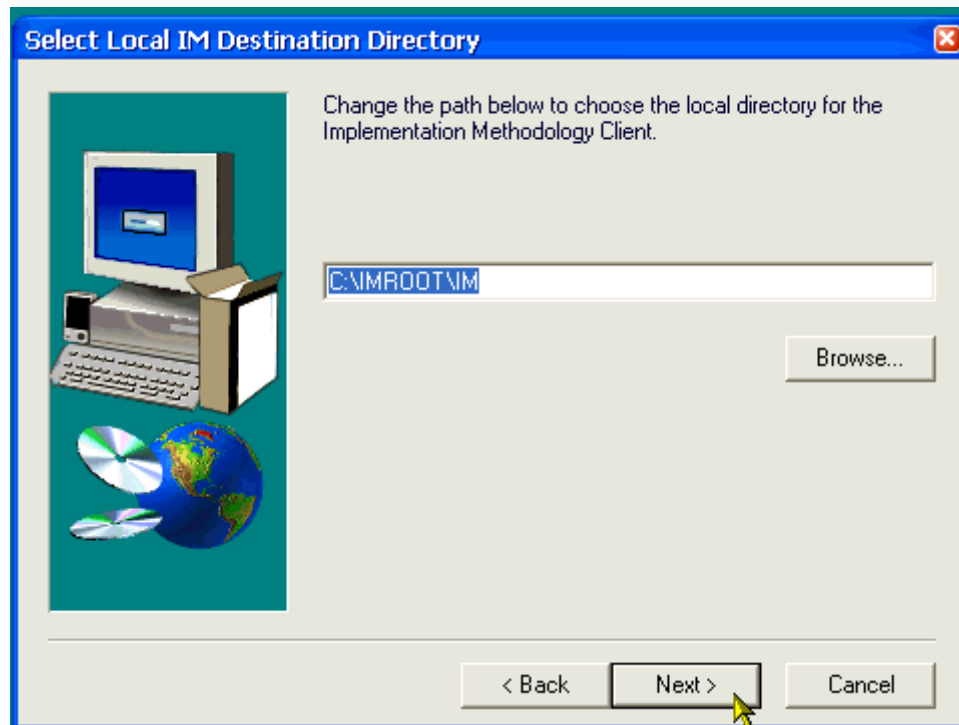
- On the **Welcome Screen** click **NEXT** to Continue, or **CANCEL** to exit. Be sure all Windows programs are closed.



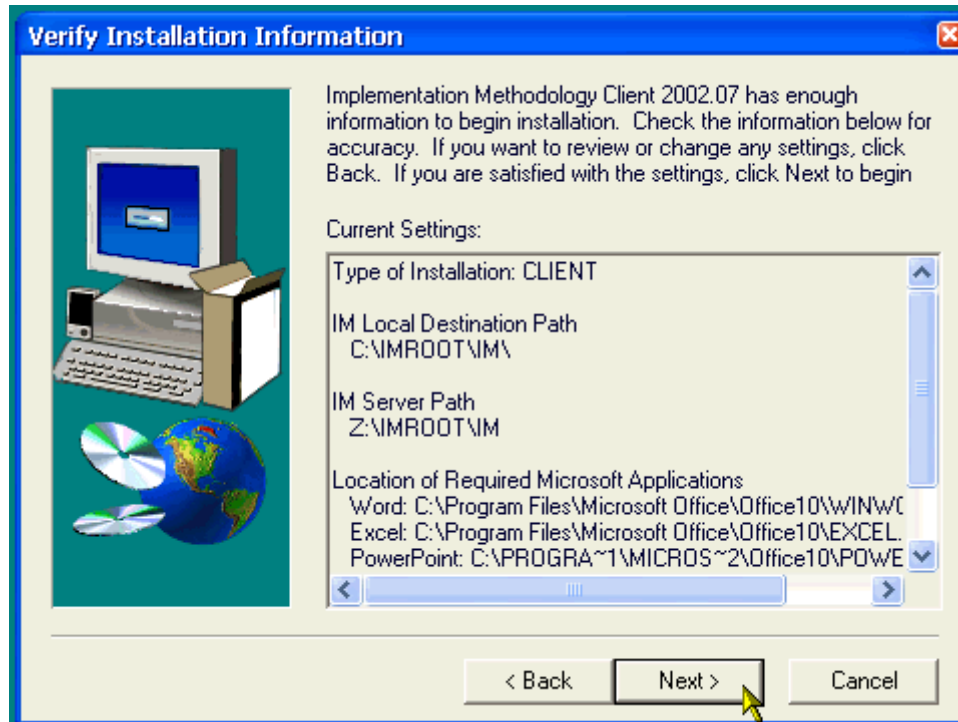
- Click **Yes** on the License Agreement Screen



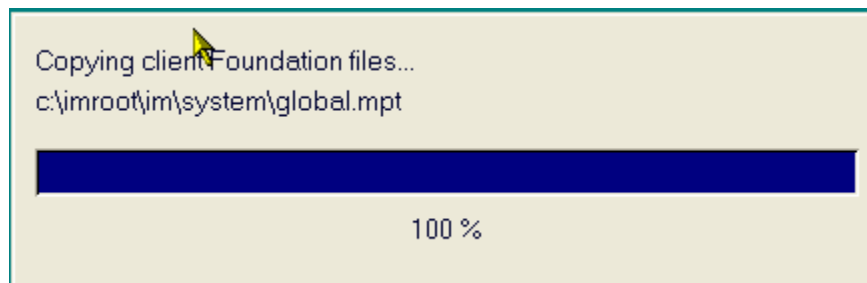
- On the **Select Local IM Destination Directory** screen, accept the local destination of the IM Client files, as "C:\IMROOT\IM". (software must be installed to this directory) Click on **NEXT** to continue.



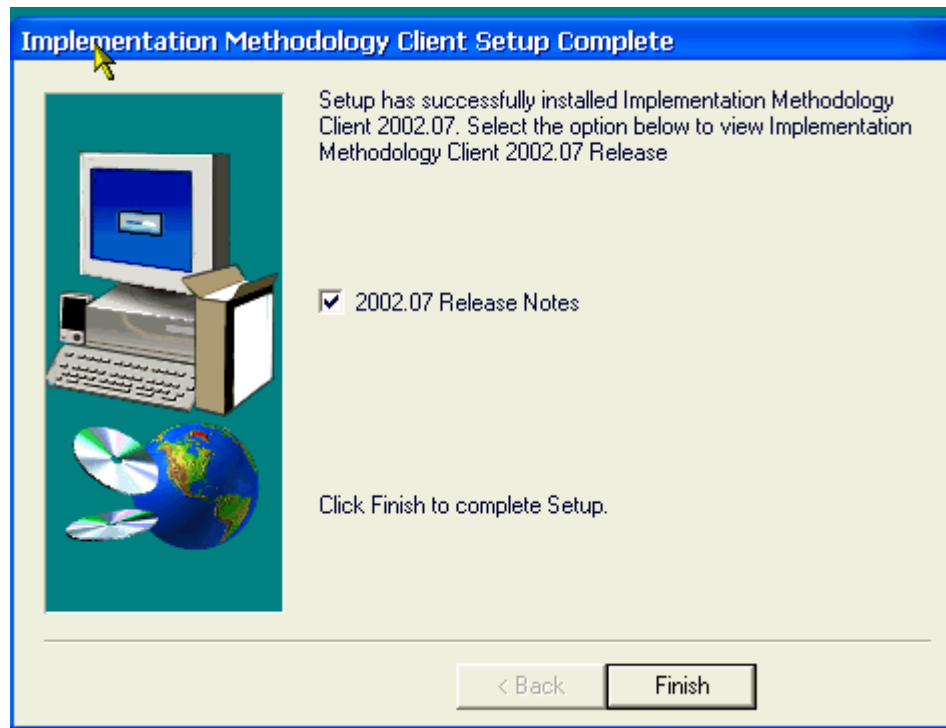
- On the **Verify Installation Information** screen, verify your installation information and click **NEXT** to begin installing files - or click **BACK** to return to the previous screen to make corrections.



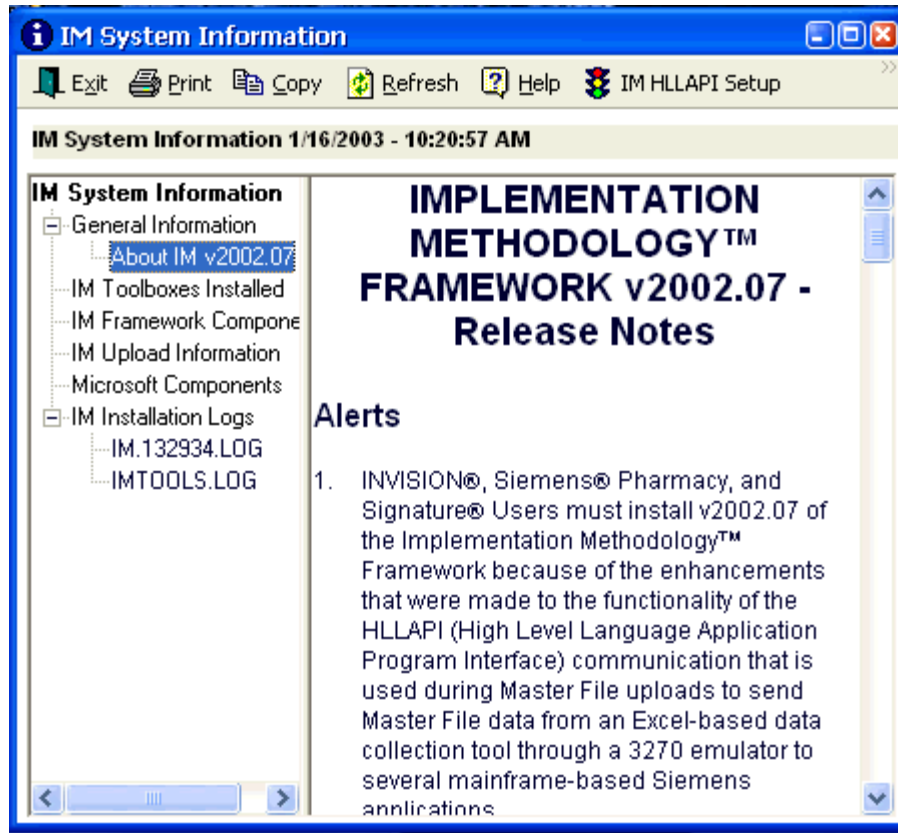
- The IM will now install to your destination path.



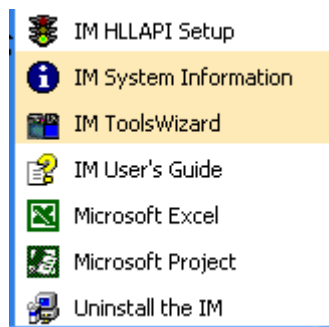
- When completed, two different FINISH screens could appear:
 - If PC system modules are updated, a screen will display requesting that you restart your system. If so, choose Yes, then click Finish to re-boot.
 - If the **Implementation Methodology Setup Complete** screen displays, Click **FINISH** to close the installation program and, if checked, display the Release Notes.



- The Release Notes will display upon completion, unless you unchecked the box 2002.07 Release Notes. Click on **EXIT** to close the Window.



- Click on the **START** Button, go to Programs and locate :
- Click on the Implementation Methodology to display the submenu:



- The Installation is complete.