
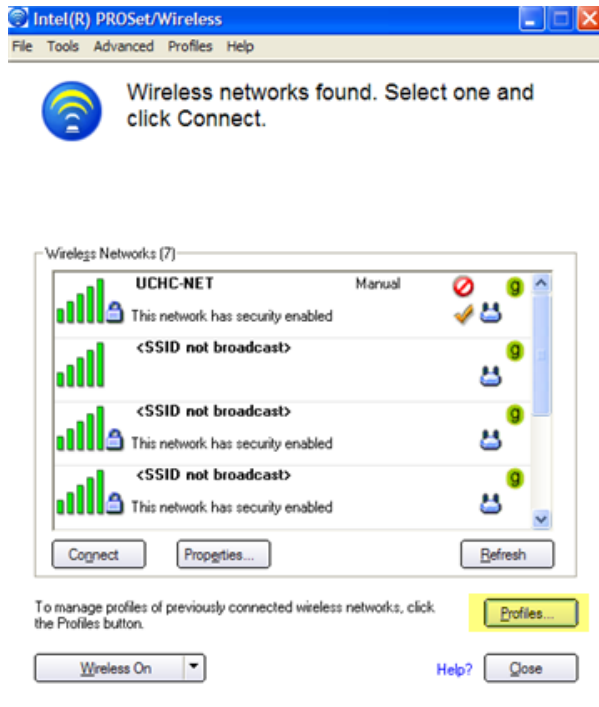
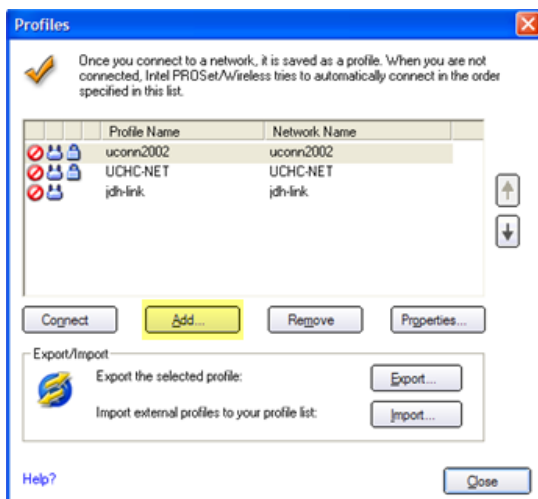


Intel PROSET Profile Setup for SSID : UCHC-WIFI

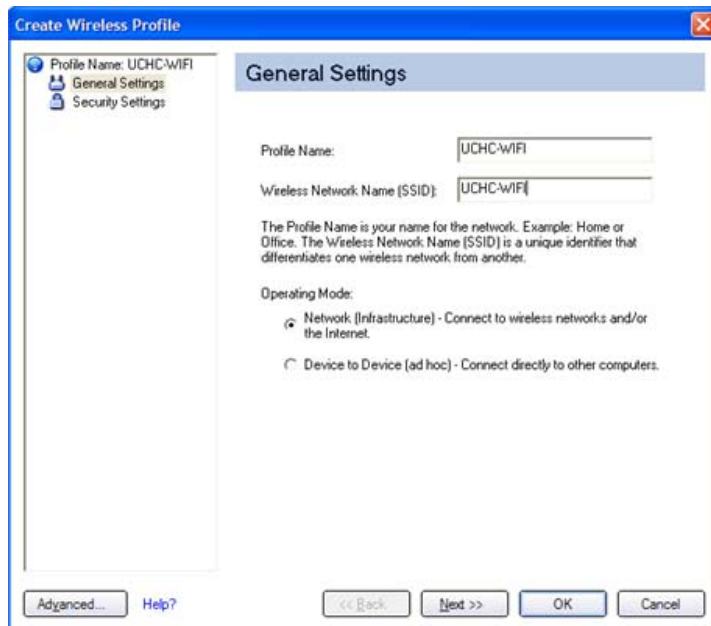
1. Click on the Wireless icon  in the Taskbar to open Intel Proset
2. In the Intel Proset Wireless Window: Click on the PROFILES button



3. Click on the ADD button :



4. Enter: UCHC-WIFI in the Name and SSID text boxes. Click NEXT.



5. Enter or Select Information as shown below:

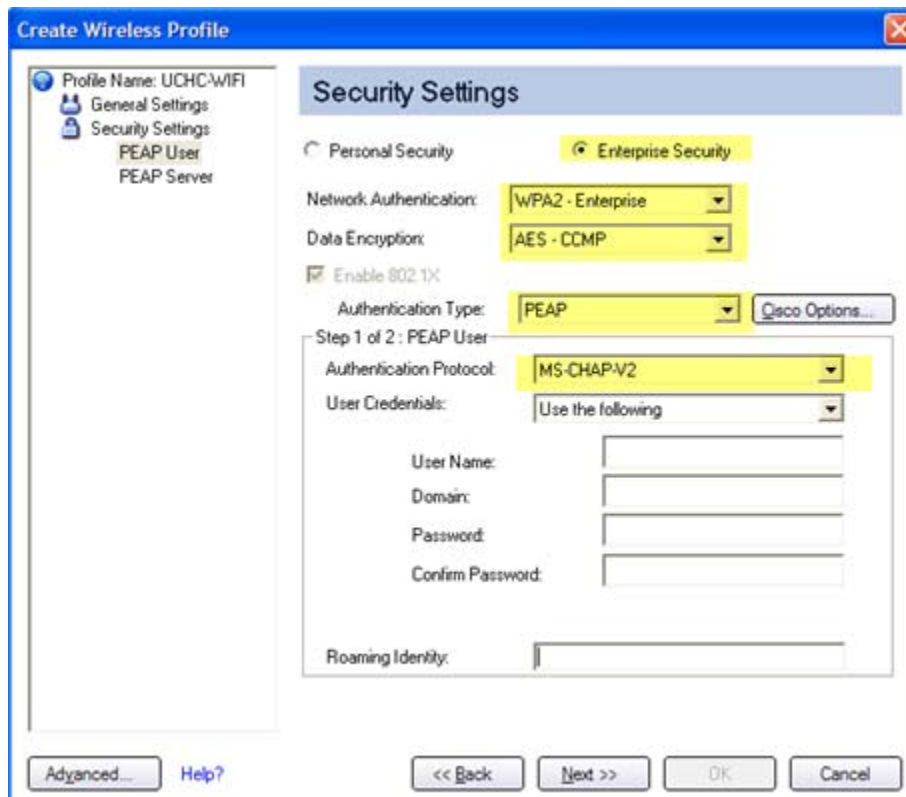
Enterprise Security

WPA2 Enterprise

AES CCMP

PEAP

MS-CHAP-V2



You can choose to Enter your USERNAME, DOMAIN and PASSWORD information here or Select the option to

User Credentials:

User Name:

Domain:

Password:

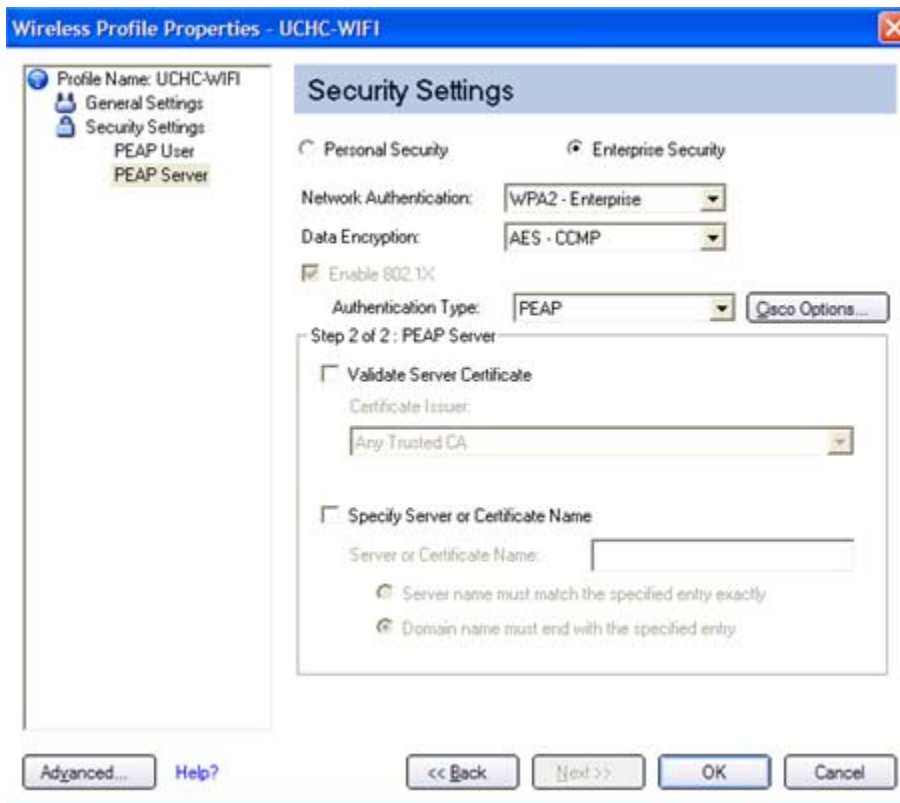
Confirm Password:

Use the following
 Use Windows logon
 Prompt each time I connect
 Use the following

Prompt for the information each time connect.

Your roaming identify may display in text box as UCHC\USERNAME.
 Then click NEXT.

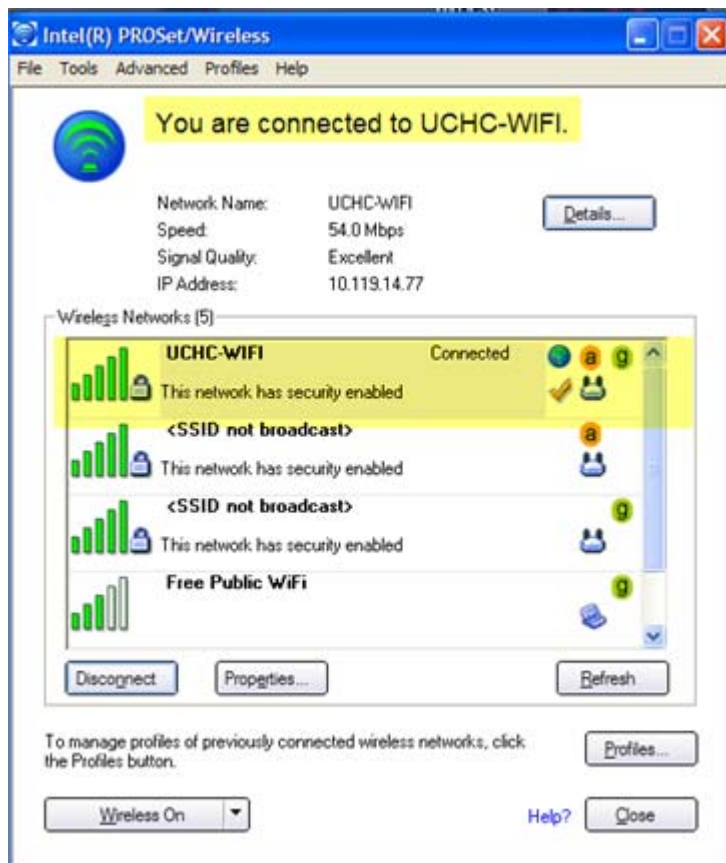
6. Uncheck VALIDATE Server Certificate. Click OK to close.



7. If you opted prompted for Username and password, the logon screen will display. Enter your logon credentials.



8. UCHC-WIFI will display in the Profiles window. If your logon credentials were entered correctly, "You are connected to UCHC-WIFI" will display.



9. The wireless icon in the Taskbar will be green. 