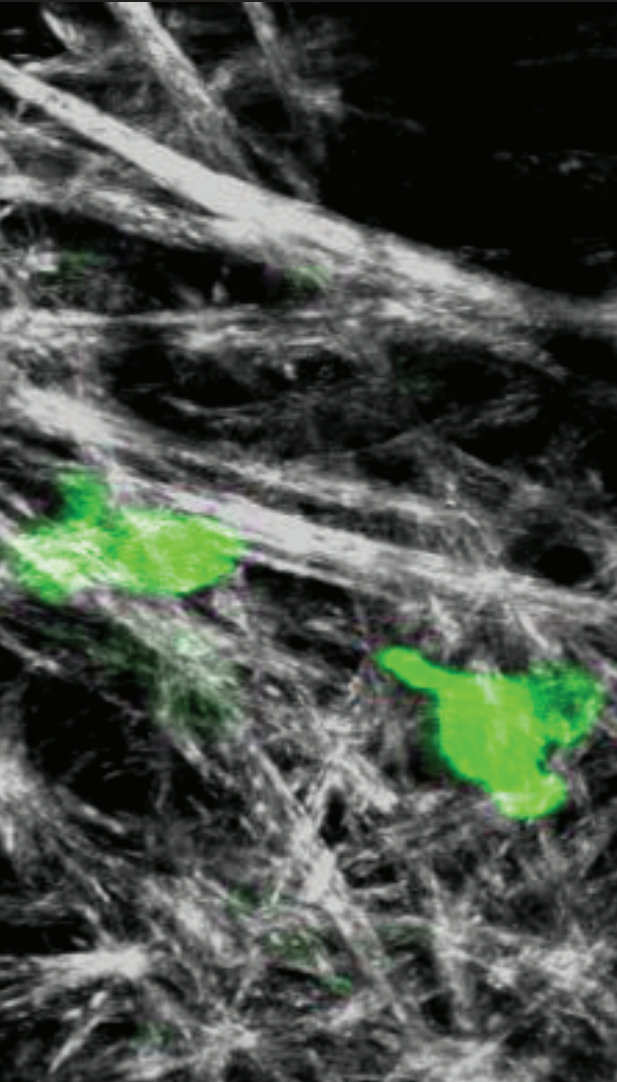


1st Annual Immune Imaging Symposium

Hosted by: the Program for Advanced Immune Bioimaging



November 7, 2015
University of Rochester, NY

immuneimagingsymposium.urmc.edu

Featured Speakers

Ronen Alon, PhD

Weizmann Institute of Science, Israel

How do neutrophils and T cells translate chemokine signals to squeeze their nuclei through endothelial barriers?

Jason Cyster, PhD

UCSF

Cellular Dynamics of the Antibody Response

Kamal Khanna, PhD

UConn

*Sentinel IL-17A-producing resident memory $\gamma\delta$ T cells orchestrate the innate immune response to secondary oral *Lm* infection*

Martin Meier Schellersheim, PhD

NIAID

Computational analysis and simulation of cellular motion

Dorian McGavern, PhD

NINDS

Imaging CNS immunity to infection and injury

Minsoo Kim, PhD

University of Rochester

Visualizing and manipulating immunity with light

Short talks selected from posters

Poster session

Saunders Research Building, URMC

265 Crittenden Blvd, Rochester, NY 14620

8:00 am - 5:00 pm

Registration FREE

but registration is required at:
immuneimagingsymposium.urmc.edu

**Opportunities for Poster
and Oral Presentations**

Lunch and refreshments

For more information:

[immuneimagingsymposium@
urmc.rochester.edu](mailto:immuneimagingsymposium@urmc.rochester.edu)



SCHOOL OF MEDICINE & DENTISTRY
UNIVERSITY of ROCHESTER MEDICAL CENTER

1st Annual Immune Imaging Symposium

University of Rochester

8:00 - 8:45 am

REGISTRATION, Poster set-up, Continental Breakfast

8:45 - 9:00 am

DEBORAH FOWELL, University of Rochester - *WELCOME AND INTRODUCTION*

9:00 - 9:40 am

RONEN ALON, Weizmann Institute of Science

How do neutrophils & T cells translate chemokine signals to squeeze their nuclei through endothelial barriers?

9:40 - 9:55 am

SHORT TALK: **AMY KU**, Roswell Park Cancer Institute

Negative impact of myeloid-derived suppressor cells on CD8 T cell trafficking in the tumor microenvironment

9:55 - 10:35 am

JASON CYSTER, UCSF

Cellular dynamics of the antibody response

10:35 - 10:50 am

SHORT TALK: **ALISON GAYLO**, University of Rochester

Effector CD4+ T cell subsets employ distinct programs for interstitial motility in the inflamed dermis

10:50 - 11:20 am

Coffee Break

11:20 - 12:00

KAMAL KHANNA, UConn

Sentinal IL-17A+ resident memory $\gamma\delta$ T cells orchestrate the innate response to secondary oral Lm infection

12:00 - 12:15 pm

SHORT TALK: **TARA CAPECE**, University of Rochester

Asymmetric segregation of LFA-1 during T cell activation and division

12:15 - 12:55 pm

MARTIN MEIER SCHELLERSHEIM, NIAID

Computational analysis and simulation of cellular motion

1:00 - 3:00 pm

LUNCH & POSTER VIEWING and 'Peoples Choice Award'

3:00 - 3:15 pm

SHORT TALK: **ELIZABETH SORENSEN**, Harvard Med School

Imaging the role of CXCR3 and its ligands in T cell interactions with the brain vasculature in cerebral malaria

3:15 - 3:55 pm

DORIAN MCGAVERN, NINDS

Imaging CNS immunity to infection and injury

3:55 - 4:10 pm

SHORT TALK: **ORIANA PEREZ**, UConn

Splenic CD169+ macrophages orchestrate innate immune responses to bacterial infection

4:10 - 4:50 pm

MINSOO KIM, University of Rochester

Visualizing and manipulating immunity with light

4:50 - 5:00 pm Meeting Wrap-up and Awards

5:00 - 6:30 pm WINE & CHEESE RECEPTION