



Emergency Medical Services *Partners*

August/September 2021, Issue 127

health.uconn.edu/ems

COVID Watch

COVID cases in Connecticut are rising, particularly in those under 50 due to the highly infectious delta variant. EMS providers should remain vigilant, being sure to wear masks at all times, and to properly gown up when dealing with patients suspected to be COVID positive.



Stroke Alerts

EMS is reminded to call in a possible stroke alert for any patient demonstrating neurological symptoms consistent with stroke/TIA. This includes patients who may be 0 on the Cincinnati scale but who are suffering from sudden altered mental status, vision disturbances and/or altered equilibrium/vertigo.



Remember the stroke window is now 24 hours thanks to advanced imaging available at UConn JDH. Transport all possible stroke patients on a priority and call in a **STROKE ALERT. Time is Brain.**

Report Opioid Overdoses to SWORD

Remember to report all suspected opioid overdoses to the **Connecticut Poison Control Center** at **1-800-222-1222**

as part of the SWORD Directive. The data collected and mapped is vitally important to state and local health departments as they surveil the epidemic and plan prevention and intervention initiatives to help mitigate the crisis.

Epinephrine in Anaphylaxis

Epinephrine is life-saving in anaphylaxis, but if used improperly, it can be fatal.



Epinephrine 1:1000 should be given Intramuscularly (IM) when used for anaphylaxis as opposed to Subcutaneously (SQ). Years ago, we gave it SQ, but IM results in more rapid absorption and higher plasma concentrations than SQ in patients suffering shock.

Never give epinephrine 1:1000 IV. This will likely put the patient into VT or VF and can obviously be fatal. This has happened in our system and has been broadly documented nationwide both in the in-hospital and prehospital environments.

For anaphylaxis refractory to 3 or more doses of IM epinephrine, (e.g. persistent hemodynamic compromise, bronchospasm), consider: Epinephrine infusion 2-10 micrograms/minute until symptoms resolve.

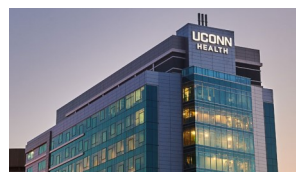
To establish an epi drip, mix 1 mg epi 1:1000 in a 500 cc bag. This will give a concentration of 2 mcg/ml. Use a 10 drip set and a flow restricting device. 2 mcg/min will be 10 drops a minute. Start at 2 mcgs/min and slowly titrate up (to a maximum of 10/mcgs/min) until symptoms resolve.

Don't hesitate to give a patient in anaphylaxis epinephrine. It can be life-saving Just be certain to use proper dosing and never ever, administer epi 1:1000 IV unless diluted into an infusion.



**American Heart Association
ACCREDITATION**
Meets standards for
Heart Attack Receiving Center

**Mission:
Lifeline®**



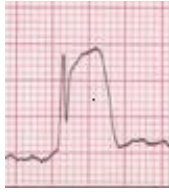
**PRIMARY STROKE
CENTER CERTIFICATION**



American Heart Association
CERTIFICATION
Meets standards for
Primary Stroke Center

STEMI Kudos

Thanks to EMS crews from Bristol EMS, American Medical Response, West Hartford Fire Department, Granby EMS, Trinity EMS, New Hartford EMS, New Britain EMS and Burlington EMS for their excellent STEMI care in 2021. Of the STEMIs UConn John Dempsey Hospital has received this year, 97% were activated prehospitally with an average 19 minutes prenotification time.



This has enabled us to meet our 90 minute door-to-balloon time benchmark in 100% of cases (excludes patients requiring ED resuscitation and those with delayed consent issues). The 19 minute prenotification time directly translates into saved heart tissue and decreased morbidity for patients from our community. Keep up the great work and remember

1. Perform rapid 12-lead ECG at first contact and transmit ASAP if showing possible STEMI
2. Call medical control with STEMI Alert, preferably from scene

EARLY NOTIFICATION SAVES LIVES!

UConn EMS CONTINUING ED 2021

September 15, 2021

October 20, 2021

November 17, 2021

December 15, 2021



8:30-11:30 A.M. (Wednesdays)

**All CMEs until further notice
will be virtual CMES.**

3 Hours CME

ALL EMS RESPONDERS WELCOME

Use this link:

<https://uconn-cmr.webex.com/uconn-cmr/j.php?MTID=m916b5a3cf93a7d9c98d2570e49cbb29f>

UConn EMS CONTINUING EDUCATION

COVID-19 Update
David Banach, M.D.

Eye and Dental Injuries
Amanda Irish, M.D.

Case Reviews
Richard Kamin, M.D.

Medical Errors:
5 Ways to Avoid Harming Your Patient
Peter Canning, Paramedic, R.N.

(3 Hours CME)
For Questions:
email Peter Canning at canning@uchc.edu

ALL EMS RESPONDERS WELCOME

Online Virtual CME

September 15, 2021

8:30-11:30 A.M.

3rd Wednesday!

<https://uconn-cmr.webex.com/uconn-cmr/j.php?MTID=m916b5a3cf93a7d9c98d2570e49cbb29f>

Attention EMS- No Smoking

Smoking is **prohibited** on the ambulance deck, as well as all parts of the UConn Health campus.

UConn Health is committed to providing a safe and healthy environment by promoting a campus that is free of tobacco products, environmental tobacco smoke, and other smoking related byproducts.



“Tobacco use or smoking of any kind including e-cigarettes is prohibited inside or on the grounds of the UConn Health campus and its properties. “

-UConn HEALTH SMOKE AND TOBACCO-FREE ENVIRONMENT POLICY

UConn Health JDH EMS Website

For news, educational information, CME schedule and past copies of our newsletter *Partners*, check out our website at:

health.uconn.edu/ems

CONTACT US:

Any questions or suggestions about EMS?
Looking for patient follow-up?

Contact EMS Coordinator Peter Canning at canning@uchc.edu or call (860) 679-3485.

