



Emergency Medical Services *Partners*

March 2018, Issue 94

health.uconn.edu/ems

Fall on Blood Thinners American Medical Response

paramedic Eric Toll and his partner Richard Berberena responded for a man in Newington under the influence of alcohol who had fallen and hit his head and was exhibiting altered mental status. Toll called UConn



John Dempsey Hospital medical control for patient acceptance, which was granted. The patient who was on Xarelto turned out to have a left frontoparietal intraparenchymal hemorrhage as well as a posterior parietal subarachnoid hemorrhage. The patient received excellent care here from our ED, Neurology, ICU and floor staff, and was discharged to short term rehab without deficits.

Patients on blood thinners who fall are at high risk for brain bleeding. Always ask your patients if they are on blood thinners and include this information in your radio patches to UConn JDH. We have 24/7 CT scan and Neurosurgical coverage, and routinely take care of these high risk patients.

UConn Neurosurgery

Dr. Ketan Bulsara leads the UConn John Dempsey Hospital

neurosurgical staff. Our staff has a wealth of knowledge and experience in treating skull based injuries, neurological disorders, complex tumors, aneurysms, brain hemorrhages, hemorrhagic stroke and ischemic stroke. We have the ability to care for stroke patients in need of endovascular large vessel clot retrieval as well as trauma patients with severe brain bleeds.



EMS/JDH Stroke Care

Great job by **West Hartford Fire Department** paramedic Peter O'Hara, EMTs James Mathews, Branden Bohan and Russell Duffy from Station 1, and **American Medical Response** EMTs Florin Testa and Melissa Baril for their care of a man with facial droop, slurred speech and right-sided arm drift. O'Hara called in a **Stroke Alert**. The patient was brought right to CT scan and subsequently given the clot buster drug tPA. The patient had an excellent recovery thanks to our EMS/hospital stroke partnership and was discharged home on a new medication regime and without the need for stroke rehabilitation. Great job all!

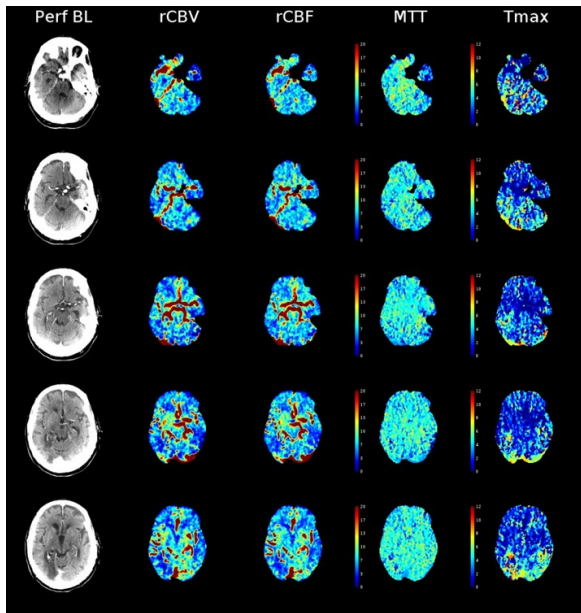


Beware March Winds: Hold on to Your Patient's Papers

All EMS Personnel: Please use caution when carrying your patient's medical papers both went entering and exiting your ambulance outside the **UConn John Dempsey ED**. We recently had a case where the patient's papers were swept up by high winds and blown off the hill, unable to be recovered. To protect your patient's private medical information, please secure the papers. For our part, our ED will soon be providing you with a manila envelope to store the papers during transit.



The Future is Now: Up to 24 Hour Stroke Window at UConn Health John Dempsey



Call in a Stroke Alert for any patient suspected of an acute stroke (up to 24 Hours).

UConn EMS CONTINUING EDUCATION 2018

- March 21, 2018
- April 18, 2018
- May 16, 2018
- June 20, 2018
- July, August – No CME
- September 19, 2018
- October 17, 2018
- November 21, 2018
- December 19, 2018



8:30-11:30 A.M.

Cell and Genome Building
400 Farmington Avenue, Farmington, CT

3 Hours CME
ALL EMS RESPONDERS WELCOME

UConn EMS CONTINUING EDUCATION



Shock
TBA

Geriatric Emergencies
TBA

Case Reviews
Richard Kamin, M.D.

Stroke/STEMI Review
Peter Canning, Paramedic, R.N.

March 21, 2018
8:30-11:30 A.M.

Cell and Genome Building
400 Farmington Avenue, Farmington, CT

ALL EMS RESPONDERS WELCOME

STEMI Honor Role

Canton EMS paramedic John Bunnell and his partners Greg Hayes, Jacqueline Tolpin, and John Malentacchi responded for a female with substernal chest pain for an hour. Bunnell did an immediate 12-Lead ECG which revealed the patient was having an inferior ST Elevation Myocardial Infarction (STEMI). He called in a **STEMI ALERT** to **UConn John Dempsey Hospital**, where Dr. Matt Barr activated the cardiac cath lab 21 minutes prior to the patient's arrival. In the lab, Dr. JuYong Lee and team found a 95% occlusion of the patient's Right Coronary Artery (RCA) which they successfully cleared and stented, restoring perfusion.



34 Minute Door- to-Balloon.
63 Minute First Medical Contact-to-Balloon Time.

UConn Health JDH EMS Website

For news, educational information, CME schedule and past copies of our newsletter *Partners*, check out our website at:

health.uconn.edu/ems

CONTACT US:

Any questions or suggestions about EMS?
Looking for patient follow-up?



Contact EMS Coordinator Peter Canning at canning@uchc.edu or call (860) 679-3485.