



Emergency Medical Services
Partners

September 2014, Issue 52

uconnems.uhc.edu

Dr. Mittal on Stroke at Sept EMS CME



Dr. Sanjay Mittal, **Director of the UCONN Stroke Program** will speak at the September UCONN EMS CME held September 17 at the East Farms Fire Department. Along with new stroke program coordinator, Jen Sposito, he will review stroke care and answer questions on topics including the

importance of stroke alerts, stroke assessment, the stroke window, who gets TPA and advanced interventions. Dr. Mittal will speak at 8:30 AM. Open to all EMS providers. Coffee and bagels will be provided. The CME runs from 8:30-11:30 and will include other topics. 3 hours CME will be given. East Farms Fire is at 94 South Road in Farmington. Plenty of free parking in the back of the building.

Stroke Care Checklist

When transporting stroke patients to John Dempsey Hospital, please include the following key points in your radio patches and documentation.

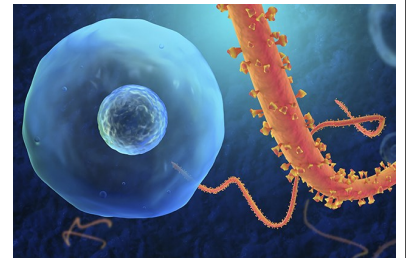


1. Last Known Time Without Symptoms
2. Cincinnati Stroke Scale
3. Blood Glucose Tested
4. Acute Stroke Alert Called to Hospital*

* Early Notification Saves Lives. Call from the scene if possible rather than from 2-3 minutes out.

Ebola: Just in Case

Healthcare providers should be alert for and evaluate suspected patients for Ebola virus infection who have both consistent symptoms and



risk factors as follows: 1) Clinical criteria, which includes fever of greater than 38.6 degrees Celsius or 101.5 degrees Fahrenheit, and additional symptoms such as severe headache, muscle pain, vomiting, diarrhea, abdominal pain, or unexplained hemorrhage; AND 2) Epidemiologic risk factors within the past 3 weeks before the onset of symptoms, such as contact with blood or other body fluids of a patient known to have or suspected to have EVD; residence in—or travel to—an area where EVD transmission is active; or direct handling of bats, rodents, or primates from disease-endemic areas.

Healthcare provider protection: Healthcare providers should wear: gloves, gown (fluid resistant or impermeable), shoe covers, eye protection (goggles or face shield), and a facemask. Additional PPE might be required in certain situations (e.g., copious amounts of blood, other body fluids, vomit, or feces present in the environment), including but not limited to double gloving, disposable shoe covers, and leg coverings.

To learn more about Ebola, attend our September 17 EMS CME at East Farms Fire at 94 South Road, Farmington (minutes from the Health Center) from 8:30 -11:30 A.M. or read the CDC Ebola Advisory posted on the state OEMS web site.

—Source: CDC Ebola Advisory

STEMI Kudos

Local paramedics continue to do an outstanding job with their STEMI Care.

Serial 12-Leads

UCONN Fire Department paramedic Thomas Paranzino responded in Farmington for a 40 year old male with sudden onset of chest pain. The patient was pale and extremely anxious. Paranzino did two 12-lead ECGs and, noting increasing ST elevation between the two versions, quickly called **John Dempsey Hospital** ED with a STEMI Alert.



Granby Ambulance paramedic Laura Nolan responded for a 31-year old male in a car who pulled to the side of the road with nonradiating chest pain. Nolan did a 12-lead ECG which showed peaked T waves. She continued doing serial 12-leads on the way to John Dempsey Hospital. 5 minutes out, a new 12-lead ECG revealed developing widespread T wave depression to accompany elevation in aVR. She reported this in a med con patch, enabling the hospital's cardiology team to prepare for the patient's arrival.



Early Notification

American Medical Response paramedic Richard Bergen responded on a Saturday afternoon for a 68 year old man with chest pain. Bergin did a 12-lead ECG which revealed massive ST elevation in the anterior leads with reciprocal changes in the inferior leads. He immediately transmitted the ECG to John Dempsey Hospital and called in STEMI alert, activating the cath lab team.

Bristol EMS paramedic Matthew Hebert responded for a 56 year old male with substernal chest pain. Hebert did a 12-lead ECG which revealed ST elevation in the inferior leads with reciprocal changes. Hebert immediately transmitted the ECG to a PCI center, and began transport. En route in contact with the center, he was diverted to John Dempsey Hospital. He called in a STEMI Alert, and the cath lab here was preactivated based on his patch. By providing early notification to the first PCI center, his patient was able to be safely diverted to an open PCI center.



STEMI Kudos (continued)

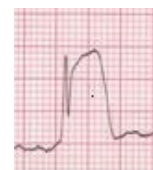
Sharp Recognition Skills



American Medical Response paramedic John Balint responded for a 56 year old man with substernal chest pain. Balint did a 12-lead ECG which revealed subtle ST elevation in V1-V3 with T wave inversion in Leads II, III, and aVF. He called in an alert with medical control to John Dempsey Hospital.

Bottom Line

All five of these patients had their occlusions cleared and perfusion restored with excellent outcomes. The actions of the paramedics saved valuable heart muscle and will lead to a better quality of life for these citizens of our local communities. Great job all!



UCONN EMS CONTINUING EDUCATION

Acute Stroke Care

Dr. Sanjay Mittal

Ebola: Just in Case:

Dr. Charles Johndro

Case Reviews:

Eclampsia/STEMI

Richard Kamin, M.D.

Research Review

Dextrose 10% for Hypoglycemia

Peter Canning, Paramedic, R.N.

September 17, 2014

8:30-11:30 A.M.

East Farms Fire, 94 South Road, Farmington CT

All EMS Providers Welcome



UCONN EMS CONTINUING EDUCATION

2014 Wednesday Morning CMEs

September 17, 2014

October 15, 2014

November 19, 2014

December 17, 2014

8:30-11:30 A.M.

East Farms Fire, 94 South Road, Farmington CT



CONTACT US:

Any questions or suggestions about EMS? Looking for patient follow-up?



Contact EMS Coordinator Peter Canning at canning@uchc.edu or call (860) 679-3485.

UConn Health Center EMS Website

For news, educational information, CME schedule and past copies of our newsletter *Partners*, check out our website at:

uconnems.uchc.edu