



Emergency Medical Services *Partners*

June 2014, Issue 49

uconnems.uhc.edu

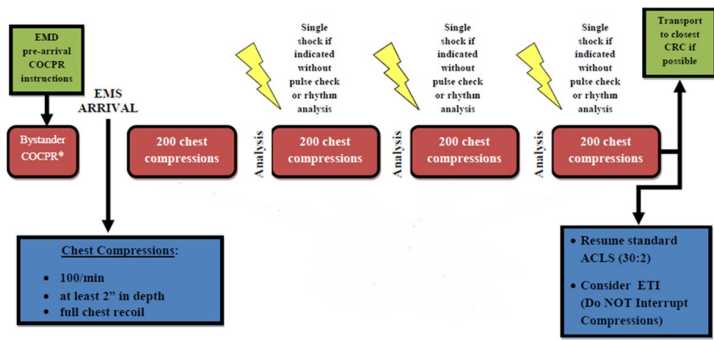
Are You Ready for CCR?

July 1, 2014, the NorthCentral EMS Region will implement Cardiocerebral Resuscitation for all arrests of suspected cardiac origin. Here are the basics:

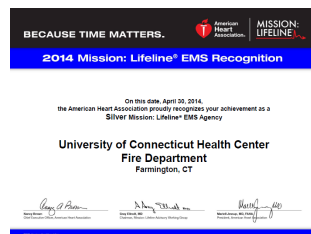
Start immediate compressions. After 200 compressions, analyze rhythm, and shock if indicated.

Insert oral airway, apply O2 NRB at 15 lpm. After 8 minutes, resume standard resuscitation with 30:2 compressions to ventilation rate.

Provide resuscitation on scene for at least 20 minutes.



UCONN Fire Department Wins 2014 Mission Lifeline EMS Silver Award for STEMI Care

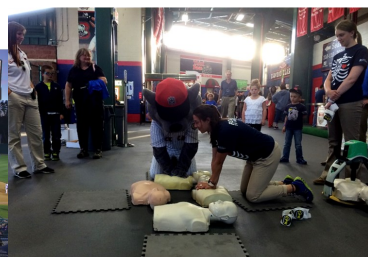


UCONN Fire Department received the prestigious **Mission Lifeline EMS Recognition Silver Award** for STEMI Care. They were one of only 3 EMS services in the Northeast Region (NE, NY, NJ) to win the award, which is the highest AHA award for EMS. In 2013, 100% of the STEMIs the UCONN FD brought to John Dempsey Hospital were preactivated with STEMI Alerts. The medics provided an average of 11 minutes advance notification. Congratulations also to **Bristol Hospital EMS** and **New Britain EMS** for winning the **Mission Lifeline EMS Recognition Bronze Awards**. They were 2 of only 7 EMS services in the Northeast region to achieve bronze. Great job all!

EMS Night at the Rock Cats

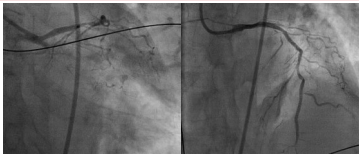
UCONN Health celebrated EMS Week with **EMS Night at the Rock Cats**, providing free tickets to EMS providers and recognizing local EMS services for their stellar prehospital care. UCONN Health, which has been notified that it will win the **Mission Lifeline Receiving Center Silver Award** for outstanding STEMI care, thanked local EMS services for their efforts during an on-field ceremony. "Our patients' care begins with EMS. We could not provide the high level of care we do without the contributions of our prehospital providers," the hospital spokesman said. 74% of UCONN's STEMIs in 2013 were activated

prehospitally. The hospital's average door to balloon times decreased by 21.5 minutes over 2012 thanks to EMS STEMI Alerts. Recognized EMS agencies included **UCONN Fire, American Medical Response/Hartford, American Medical Response/Waterbury, Bristol Hospital EMS, New Britain EMS, Bloomfield Ambulance, Aetna Ambulance** and **Simsbury Ambulance**.



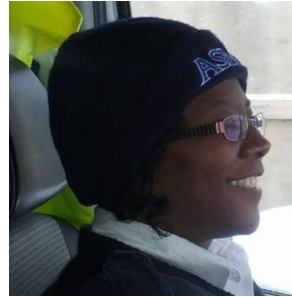
STEMI Kudos Campion Ambulance

Paramedic Steve York
and his partner Rafael



Cruz were transporting a patient from Sharon Hospital to a hospital in Hartford for periodic chest pain and elevated troponins when York discovered the patient's blood pressure was falling. He did an immediate 12-lead ECG and noticed the patient now had ST elevation in the anterior leads that were not present when the transport started. Recognizing the patient was deteriorating, he made the decision to divert to the closest PCI hospital. He called in a STEMI alert to John Dempsey Hospital, and based on his patch, Dr. Robert Fuller activated the hospital's cath lab 16 minutes before the patient's arrival. Our cardiology team met them in the ED and after obtaining consent from the patient's family, brought the patient, who was now severely hypotensive, up to the cath lab still on the EMS stretcher. Dr. JuYong Lee and team discovered widespread cardiac disease including three separate 99% occlusions in the patient's Left Anterior Descending Artery (LAD). The occlusions were cleared, and stented, restoring perfusion. 41-Minute Door-to-Balloon Time! 61-Minute EMS ECG-to-Balloon Time! Great job team!

Support Carolyn Strong



As many of you know, ASM EMT Carolyn Strong was recently badly injured in a motorcycle accident. She is currently recovering at Gaylord Hospital. Carolyn with her quick broad smile and everything is alright manner has always exemplified the

best of us and made us proud to have such a spirit in our profession. Her coworkers and friends have started a web site to provide updates on her progress and coordinate fundraising activities to help Carolyn and her family out as she is nurtured back to health. Go to:

www.carolynstrong.org

Get well soon, Carolyn! We are all thinking about you!

UCONN EMS CONTINUING EDUCATION June Morning EMS CME



Sepsis

Tia Little, M.D.



Bundle Branch Block:

Richard Kamin, M.D.

Protocol Updates:

Kamin/Canning

Journal Review:

Prehospital Anaphylaxis, Obese Patients

Paramedic Stroke Diagnosis

Peter Canning, Paramedic, R.N.

June 18, 2014 (Wednesday)

8:30 A.M.

East Farms Fire Department

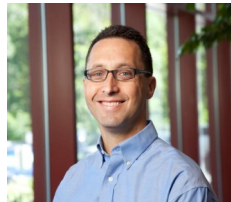
94 South Road, Farmington, CT

For Questions, email Peter Canning at canning@uchc.edu

**ALL EMS RESPONDERS AND GENERAL PUBLIC
WELCOME**

Kamin Wins Quigley Award

UCONN Health EMS Medical Director Richard Kamin received the 2014 Mark Quigley Award for *"a physician who demonstrates exemplary qualities as a teacher, visionary, and executor of highest quality emergency medical care."* The awards ceremony was held at the state capitol as part of 2014 EMS Week.



Other award winners included: Commissioner's Award – Dr. C. Steven Wolf, Gillhooly/Lawton Award – John Spencer, Paul Winfield Smith Award – Michael Zacchera, Distinguished Service Award – Windsor EMS. Congratulations all!

UCONN Health Center EMS Web Site

For news, educational information, CME schedule and past copies of our newsletter *Partners*, check out our web site at:

uconnems.uchc.edu

CONTACT US:

Any questions or suggestions about EMS? Looking for patient follow-up?



Contact EMS Coordinator Peter Canning at canning@uchc.edu or call (860) 679-3485.