



**Emergency Medical Services**  
*Partners*

January 2015, Issue 56

[uconnems.uhc.edu](http://uconnems.uhc.edu)

**QA Corner— Strive for Excellence**

**Stroke Care**—Here's our first 5 months of EMS stroke data.

- 71.4% Strokes Dispatched on Priority One**
- 48.5% Response within 8 Minutes
- 82.8% Receive Paramedic Care
- 62.8% Recognized as Strokes by EMS**
- 74.2% Had EMS Cincinnati Scale
- 80% Had EMS Blood Glucose
- 60% Stroke Alerts
- 37.1% Transported on Priority to Hospital**
- 14.2% Received TPA

When EMS recognized the stroke, we had a high compliance with Cincinnati Scale (95.4%), Blood Glucose (95.4%), Last Known Well-time (100%), and Stroke Alerts (95.4%). Additionally **100% of Stroke Alerts went directly to CAT Scan** when the last known well-time was within 4.5 hours.

Areas for Improvement: Review Dispatch Protocols (underway), Improve Stroke Recognition (CMEs planned), Increase Safe, Rapid Transport.

**Hip Fracture Treatment-We Can Do Better**

In November there were 6 hip fracture patients brought in by EMS. 3 had documented pain scales. 4 had ALS response. 2 received analgesia. Great job by **UCONN Fire Department** Paramedics Josh Levin and **American Medical Response** paramedic Cyrus Thomas-Walker.



\*\*\*

Remember: **Untreated pain is destructive.** Failure to properly treat pain can hinder recovery, increase inflammation and lead to chronic pain.

**Happy Holidays**

The staff at John Dempsey Hospital wishes all of our EMS partners and their



families a happy holiday season. We thank you for all your dedicated and professional service and look forward to working with you in the coming year. It is good to know that you are all out there looking out for the people of our communities. They are well served. Please — all of you — stay safe.

**UCONN Fire Department's New Ambulance**



The **UCONN Fire Department's** new ambulance is on line and serving the Health Center, responding to emergencies on campus and providing interfacility critical care transport.

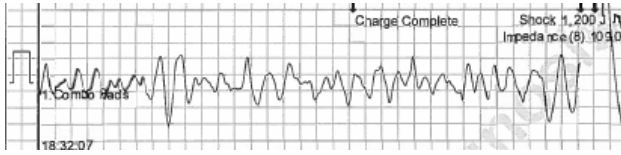
**UCONN Registration Process Changes**

From the hours of midnight to 7:00 A.M., please bring your patients directly to our triage desk. Registration will be done at bedside. No need to stop at registration.

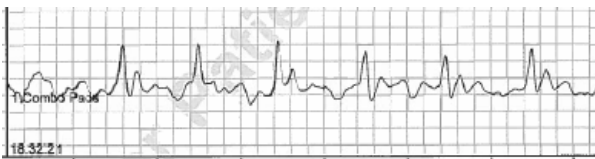
From 7:00 A.M. to midnight, unless patient is critical, please stop at registration. Be prepared to give registration patient's, name, date of birth, social security number and reason for visit. Thanks!

## Cardiac Arrest Save

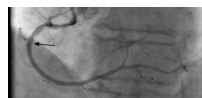
An 87 year old female felt substernal chest pain after eating dinner. She called 911. **Farmington Fire Department** responders Capt. P. Krause, FF/EMT McCalmont, and FF/EMT D'Addabbo arrived first. They gave the patient ASA on scene. While being wheeled to the ambulance, the patient went into cardiac arrest.



**American Medical Response** EMTs Michael Messenger and Michael Drake, performed CPR and the patient received one defibrillation from the Farmington responders, restoring her pulse and breathing.



Serial 12-leads done by **UCONN Fire Department** paramedics Mathew Kellick and John Martinez failed to show any ST elevation. The patient was transported on priority to **John Dempsey Hospital**. An immediate 12-lead on arrival also was nondiagnostic. A half hour later the patient developed Tombstone ST elevations in the inferolateral leads. The cardiac cath lab was immediately activated. The patient was found to have a 99% blockage in the Right Coronary Artery (RCA) in the mid portion, which was cleared and stented. The patient did quite well and was discharged home three days later with a normal ejection fraction. Great job all!



## STEMI Kudos—Symptom Onset to Balloon

The standard for Door to Balloon (D2B) times in STEMI is 90 Minutes. Recently we extended that time to 90 minutes from First Medical Contact (FMC) or paramedic arrival at patient side. In December, we saw three STEMI's that had first symptom to balloon times of less than 90 Minutes!

\*\*\*

**Bristol—Bristol Ambulance** paramedic Clinton Chaput and his partner Enis Mara arrived at night, arriving at a patient's side within 10 minutes of the man feeling chest pain. Chaput did an immediate 12-lead ECG that revealed an inferior ST-Elevation Myocardial Infarction. Chaput transmitted the ECG to **John Dempsey Hospital** and called in a STEMI Alert, activating the cardiac cath lab. **45 Minute D2B/ 78 Minute FMC/ 88 Minute Symptom Onset-to-Balloon.**

\*\*\*

**Simsbury- Simsbury Ambulance** paramedic Greg Shovak and his EMT partners Ann O'Donnell and Dave Harriman responded on a Sunday morning for a 68 year old male with chest pain. Shovak did an immediate 12-lead ECG which showed an Anterior STEMI. He immediately transmitted the ECG and called in a STEMI Alert to John Dempsey Hospital from the patient's house. **33 Minute D2B/66 Minute FMC/85 Minute Symptom Onset to Balloon.**

\*\*\*

**Farmington -UCONN Fire Department** paramedics David Demarest and John Pickert and **American Medical Response** Paramedic Adam Slivinski and his partner Timothy Sikorsky responded for a male with chest pressure. Demarest did an immediate 12-lead ECG, which showed ST elevation in the anterior leads. He called in a STEMI alert to John Dempsey Hospital. **25 Minute D2B/ 45 Minute FMC/ 66 Minute Symptom Onset to Balloon Time.** Great work all!

## UCONN EMS CONTINUING EDUCATION



2015 Schedule to Be Announced Soon



No General Morning CME in January or February  
UCONN FD will have closed CME

Look for UCONN Health EMS Stroke Conference  
to Be Held in Early 2015

## Paramedic Transition Material

The North Central EMS Regional Medical Advisory Committee has adopted the policy of requiring all North Central sponsored paramedics to complete paramedic transition material to the new national standard by **March 31, 2016**. This applies only to paramedics who did not get the new material in their original paramedic course. The transition material may be covered in an in-person refresher class or through an on-line class.

## UConn Health Center EMS Website

For news, educational information, CME schedule and past copies of our newsletter *Partners*, check out our website at:

[uconnems.uhc.edu](http://uconnems.uhc.edu)

## CONTACT US:

Any questions or suggestions about EMS? Looking for patient follow-up?



Contact EMS Coordinator Peter Canning at [canning@uhc.edu](mailto:canning@uhc.edu) or call (860) 679-3485.