



## Emergency Medical Services

# Partners

January 2012, Issue 18

[uconnems.uhc.edu](http://uconnems.uhc.edu)

### 2011 in Review

2011 was an exciting year with many highlights. Whether resuscitating a premature infant or providing pain relief to an elderly woman with a hip fracture, EMS providers once again proved to be an essential partner in providing health care to our community.

#### Storms

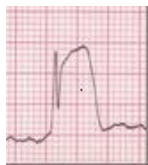


While many were safe inside, EMS braved the elements, battling Hurricane Irene in August, and then the once in a century October Nor'easter whose powerful winds and snow knocked over trees, branches and power lines, leaving many of our

towns in cold and darkness for over a week. Throughout both disasters EMS was there to rescue those in need, providing quality medical care and safe transportation through the storm.



#### STEMI Success



Thanks to EMS's ability to quickly assess patients with suspected cardiac issues, apply and interpret 12-lead ECGs and provide our staff with early notification of incoming patients with ST-Elevation MIs, we were able to significantly decrease our door-to-balloon times, saving our patients heart muscle and significantly improving their resulting quality of life.

#### Pain and Comfort Management

EMS is responding well to our increased emphasis on pain management and comfort care of those in distress. We are seeing a significant increase in the appropriate prehospital use of anti-emetics and analgesics. We particularly want to single out the UCONN Fire De-



### Happy Holidays



The staff at John Dempsey Hospital wishes all of our EMS partners and their families a happy holiday season. We thank you for all your dedicated and professional service and look forward to working with you in the coming year. It is good to know that you are all out there looking out for the people of our communities. They are well served. Please — all of you — stay safe.

partment paramedics who are doing an outstanding job in this area, increasing their annual use of these medications well over tenfold in the last three years.

#### CME Expansion

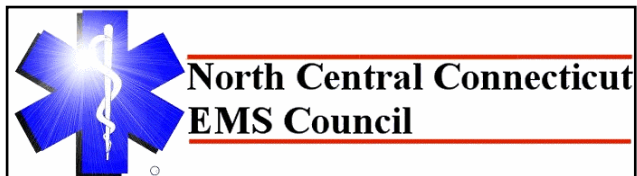
We expanded our CME offerings this year and were pleased with the growing attendance and new faces attending our classes, which are open to all EMS responders and the public. We enjoyed going on the road and doing presentations at many service training centers as well. We were also pleased to incorporate the use of the Health Center's state of the art Simulation Center which enables hands on scenario based instruction.

#### American Medical Response Sponsorship

We were pleased to begin medical sponsorship in 2011 to the men and women of American Medical Response Farmington Valley/Waterbury Division. We look forward to a close working relationship, providing education, medical oversight and patient follow-up.



## 2012 North Central Regional Guidelines (Special Supplement)



The North Central EMS Regional Guidelines are scheduled to go into effect on February 1, 2012. Paramedics will be required to attend a rollout or an on-line session and complete a short open book exam. The region will also be issuing BLS Guidelines. There will be no exam for basics or AEMTs. Please see our special January Supplemental issue of *Partners* for highlights of the new guidelines.

### January 5, 2012 CME Emergency Preparedness and Response for People with Disabilities

Brian Rykowski

Quality Assurance Supervisor

Hartford Emergency Services & Telecommunications

### Diabetes

Dr. Shawn Stapp

### Case Reviews

Dr. Richard Kamin

### Journal Review

*Serial Prehospital 12-Lead Electrocardiograms Increase Identification of ST-segment Elevation Myocardial Infarction*

Prehospital Emergency Care. 2012 Jan

3 Hours CME

1 Additional Hour for Journal Article and Test

**Keller Auditorium 9:00 A.M.**

For copies of article and test, email Peter Canning

at [canning@uchc.edu](mailto:canning@uchc.edu)

**John Dempsey Hospital  
EMS Conference  
Date To Be Announced  
Coming Fall 2012**

### UCONN Health Center EMS Web Site

For news, educational information, CME schedule and past copies of our newsletter *Partners*, check out our web site at:

[uconnems.uchc.edu](http://uconnems.uchc.edu)

## 2012 Morning CME SCHEDULE

January 5, 2012 (Thursday) (9:00 A.M.)

February 15, 2012 (Wednesday)

March 21, 2012 (Wednesday)

April Skills TBA

May 16, 2012 (Wednesday)

June 20, 2012 (Wednesday)

July 18, 2012 (Wednesday)

August—NO CME

September 19, 2012 (Wednesday)

October Skills TBA

November 21, 2012 (Wednesday)

December 19, 2012 (Wednesday)

Our monthly CMEs are held in Keller Auditorium at 8:30 A.M. Enter main door, take escalator down one floor. CMEs include general lectures, case reviews and journal article review. Selected additional topics may be added. 3 CME hours are awarded. 1 additional Hour CME will be given for those completing open book quiz on journal articles. Daytime parking in main lot at top of hill is now limited to visitors and patients. If you are unable to find parking, please park in lower lots and take shuttle bus. Thanks.

**All EMS Responders are Welcome!**

## 2012 Evening CME Schedule

March 28, 2012 (Wednesday)

June 13, 2012 (Wednesday)

September 5, 2012 (Wednesday)

December 5, 2012 (Wednesday)

Our quarterly evening CMEs are held in Keller Auditorium at 7:00 P.M. Pizza and refreshments are offered before hand. There is plenty of parking at the top of the hill. 3 Hours CME are offered. All are welcome!

## CONTACT US:

Any questions or suggestions about EMS? Looking for patient follow-up?



Contact EMS Coordinator Peter Canning at [canning@uchc.edu](mailto:canning@uchc.edu) or call (860) 679-3485.