



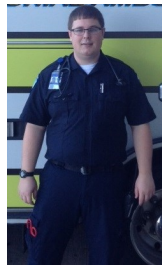
Emergency Medical Services *Partners*

December 2016, Issue 79

uconnems.uhc.edu

Campion/New Hartford Ambulance Cardiac Arrest Save

Campion Ambulance paramedic Tom Latosek and responders from New Hartford Ambulance responded to a 59-year-old male who collapsed while chipping wood in his yard. The arrest was witnessed and the patient received 8 minutes of bystander CPR before he was shocked by an AED. The EMS crew shocked the patient an additional 4 times and administered epi and amiodarone.



They were able to get pulses back and the patient was breathing on his own by arrival at UConn John Dempsey Hospital. Thanks to the great job by paramedic Latosek and all those who responded, the patient is alert, able to talk with his family, has full motor function, and is on the road to recovery.

UConn JDH Primary Stroke Center

We are proud to announce UConn John Dempsey Hospital passed its recent accreditation stroke survey by the Joint Commission. Much credit and thanks go to our EMS partners who, by rapidly identifying stroke symptoms and calling stroke alerts, have improved outcomes for our stroke patients.



Posterior Circulation Strokes

Among the most difficult strokes to identify are posterior circulation strokes which often present with 0 Cincinnati scores. In patients **with risk factors for stroke**, utilize the UCONN S.A.V.E. Stroke Test.



UConn S.A.V.E. STROKE TEST

If your patient scores a 0 on the Cincinnati Stroke Scale, ask these questions:

- S- Sudden** Did the patient's symptoms happen suddenly and without an explanation such as trauma or intoxication?
- A - Altered** Does the patient present with altered mental status?
- V- Vision** Is the patient experiencing a sudden vision problem?
- E- Equilibrium** Does the patient have an altered equilibrium or vertigo?

A yes to the first question and a yes to any of the following three questions should heighten your suspicion of stroke as a possible cause of the patient's condition.

S.A.V.E. YOUR PATIENT
Use the UConn S.A.V.E. Stroke Test

Stroke Kudos

Great job of stroke care by American Medical Response paramedic Amanda Barone and EMT John Racloz. 38 Minutes Door to tPA.



Bloomfield Ambulance paramedic John Bunnell and EMT Jack Serrafin. 68 Minutes Door-to tPA
American Medical Response paramedic Rick Fortier and EMT Gina Zimmerman. 93 Minutes Door-to-tPA.
Their recognition of stroke patients, including those with atypical symptoms, enabled our stroke center team to begin a rapid neurological exam and risk assessment that led to these patients receiving tPA, which helped greatly moderate their stroke disabilities. Maintain a wide differential diagnosis. Never hesitate to call a **Stroke Alert** or **Possible Stroke Alert**.

State Protocol Exams— Instructions

UConn John Dempsey Medical Control is requiring all of our sponsored responders to review the new state protocols and take the on-line exam.

1. Log in or create an account.

<https://ct.train.org/DesktopShell.aspx>

2. Add the Hospital (s) you have paramedic sponsorship through to your “Groups.” To do this, first click on “My Account.” Next, select the “Groups” tab then the “Select Groups” button next to State Portal. In the Select Groups pop-up window, select “advanced.” Expand the “Hospital in Connecticut Group” and select each hospital you are sponsored through. Scroll to the bottom of the list and select “submit.”

3. Now you should be able to access the course. In the search field you will enter course ID#. The course ID numbers are as follows:
Web-based, self-study course which reviews the new Statewide EMS Protocols:

- 1064899—Overview

(NOTE: the PowerPoint presentation is also available to download on the Statewide EMS Protocols page of the OEMS website)

Exams for all provider levels:

- 1067388 – EMR
- 1067386 – EMT
- 1067337 – AEMT
- 1067387 – Paramedic

The exams should be completed by December 31, 2016. If you fail to achieve an 80%, you may take the test again until you attain the score.

You should print out and retain a copy of the certificate for the exams. You do not need to send them to UConn medical control. If you have selected John Dempsey as your hospital, then we will be able to see that you have taken and passed the class.

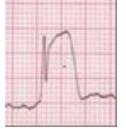
UConn Health EMS Website

For news, educational information, CME schedule and past copies of our newsletter *Partners*, check out our website at:

www.health.uconn.edu/ems/

STEMI Kudos

Burlington EMS paramedics Michael Gajdosik and Kevin Ceritello and AEMT Ryan Sanford.



47 Minute Door-to-Balloon. 76 First Medical Contact-to-Balloon.

Bristol EMS paramedic Rob George and his partner Chris Hoebel.

54 Minute Door-to-Balloon. 82 First Medical Contact-to-Balloon.

Bristol paramedic Robert George and his partner Alan Green.

58 Minute Door-to-Balloon, 97 Minute First Medical Contact to Balloon.

UConn EMS CONTINUING EDUCATION



Topics
Addiction
Literature Review
Cardiac Arrest
Case Reviews
Richard Kamin, M.D.



(3 Hours CME)

Bagels and Coffee will be served

For Questions, email Peter Canning at canning@uchc.edu

December 21, 2016

8:30-11:30 A.M.

400 Farmington Avenue, Farmington CT

ALL EMS RESPONDERS WELCOME

2016 UCONN EMS CONTINUING EDUCATION



Monthly Morning CME

December 21, 2016



Cell and Genome Sciences Building Conference Room
400 Farmington Avenue

Farmington, CT

8:30-11:30 A.M.

Bagels and Coffee will be served

For Questions, email Peter Canning at canning@uchc.edu

ALL EMS RESPONDERS WELCOME

CONTACT US:

Any questions or suggestions about EMS?
Looking for patient follow-up?



Contact EMS Coordinator Peter Canning at canning@uchc.edu or call (860) 679-3485.