



Emergency Medical Services *Partners*

August 2015, Issue 63

uconnems.uhc.edu

Trauma Care-UConn Health/John Dempsey Hospital



UConn Health/John Dempsey Hospital is embarking on a process of becoming verified as a Level III Trauma Center. EMS should still bring all trauma cases meeting state triage guidelines to Level I and Level II centers as mandated by regulation. A Level III Designation will mean that we have installed rigorous processes and training standards to provide the best care possible to patients with moderate trauma and to stabilize and transfer out those patients with major trauma who may arrive here by private car or who are too unstable for EMS to transport directly to a Level I or Level II. We are hoping for designation in Fall 2016.



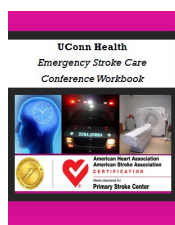
EMS Education– Trauma Focus

As part of our overall efforts, we will be increasing our EMS Education and Quality Improvement focus in areas such as orthopedic injuries, geriatric trauma and pain management. Look for the trauma benchmarks we will be using in a future edition of this newsletter. We are excited to be working with our EMS partners on this important project.



Stroke Workbooks

We still have a limited number of stroke workbooks from our May UConn Health Emergency Stroke Conference. See Peter Canning to obtain a copy.



CMED Recorder to Assist With QA

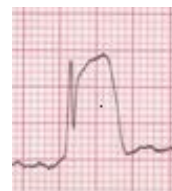
John Dempsey Hospital's EMS Medical Direction team now has the capability of reviewing all CMED patches into our facility.



This is tremendously helpful to our QA efforts, allowing us to monitor all transports and medical control patches into our hospital.

Remember all EMS transports to John Dempsey Hospital require a CMED radio patch. Whether a patient is in cardiac arrest or merely has a cold or the flu, a radio patch enables us to prepare appropriately for the ambulance arrival.

When calling in a **STEMI, Stroke or Sepsis Alert**, please state this at the beginning of your patch. Only **STEMI Alerts** require Medical Control.



Do not hesitate to request a **Stroke Alert** on any patients with suspected stroke no matter how long the last known well time.

Depending on the circumstances of the case, the hospital may or may not activate their in-hospital response. The hospital decision should not be taken as a reflection on your decision to call in the alert. The prehospital and in-hospital alerts are guided by different criteria. EMS's job is to help the hospital ready for potential stroke patients.



Remember: Early Notification Saves Lives!

EMS Honor Roll

STEMI

Simsbury Ambulance paramedics Kristin Fillian, Michael Delehanty, and EMT Ann O'Donnell responded for a 68 year old male in cardiac arrest receiving CPR from his family. After initiating ACLS, they restored pulses. He was brought to John Dempsey Hospital where in the cath lab he was found to have a total occlusion of the proximal right coronary artery, which was successfully cleared and stented. **45 Minute Door-to-Balloon. 85 Minute First Medical Contact-to-Balloon.**

Acute Stroke

Burlington EMS responders Mary Ellen Maynard, Mike Haaser and John Haviland. **50 Minutes Door-to-TPA, 83 Minutes FMC to TPA.**

American Medical Response paramedic Richard Fankhanel and EMT Edwin Guzman. **54 Minutes Door-to-TPA, 79 Minutes FMC to TPA.**

American Medical Response paramedic Jane Gordon for her care of two stroke patients.

Hip Fracture

Bloomfield Ambulance/AMR paramedics Mary Whitmore and Alan Goodman

UCONN Fire Department paramedics Wendell Cote, Josh Levin.

American Medical Response paramedics Ryan Will, John Anderson, Ryan Will, Danielle Marcue, and Michael Palmieri.

Anaphylaxis

Great job by **American Medical Response** EMTs Henry Sahn and Griffin Davis for their quick assessment of a patient stung by bees, rapidly administering an Epi-Pen, then calling for a medic intercept.

Ice Pops Are Back!

It's summer time and ice pops are back in the EMS room. We appreciate your hard work out in the field. Stop by our EMS room next time you are here and enjoy an ice-pop on a hot day.



UConn Health EMS Website

For news, educational information, CME schedule and past copies of our newsletter *Partners*, check out our website at:

uconnems.uhc.edu

Dr. Sara Knuth 1952-2015

Sara Knuth was an MD in the Emergency Department at Hartford Hospital for over twenty-five years and the EMS Medical Director of Ground EMS for much of that time. She passed away recently after a long illness. Paramedics and EMTs across the region mourn the loss.



What knowledge, kindness and time she gave to all of us lives on in our daily work and the lives of the patients we touch. Contributions can be made to Univ. of St. Joseph - S.Knuth MD Fund at USJ, Institutional Advancement, 1678 Asylum Avenue, West Hartford, CT 06117, for the Sara Knuth Medicinal Garden at Elizabeth Park.

2015 UConn EMS CONTINUING EDUCATION

Monthly Morning CME



August – No CME
September 16, 2015
October 21, 2015
November 18, 2015*
December 16, 2015



Held at East Farms Fire
94 South Road, Farmington, CT
8:30-11:30 A.M.

*November CME will be in Keller Auditorium

Bagels and Coffee will be served
For Questions, email Peter Canning at canning@uchc.edu

ALL EMS RESPONDERS AND GENERAL PUBLIC
WELCOME

Save the Date for this Excellent Program EMS, Veterans and Post Traumatic Stress Disorder:

Keller Auditorium
UConn Health/John Dempsey Hospital
November 18, 2015
8:30-11:30 A.M.

CONTACT US:

Any questions or suggestions about EMS? Looking for patient follow-up?



Contact EMS Coordinator Peter Canning at canning@uchc.edu or call (860) 679-3485.