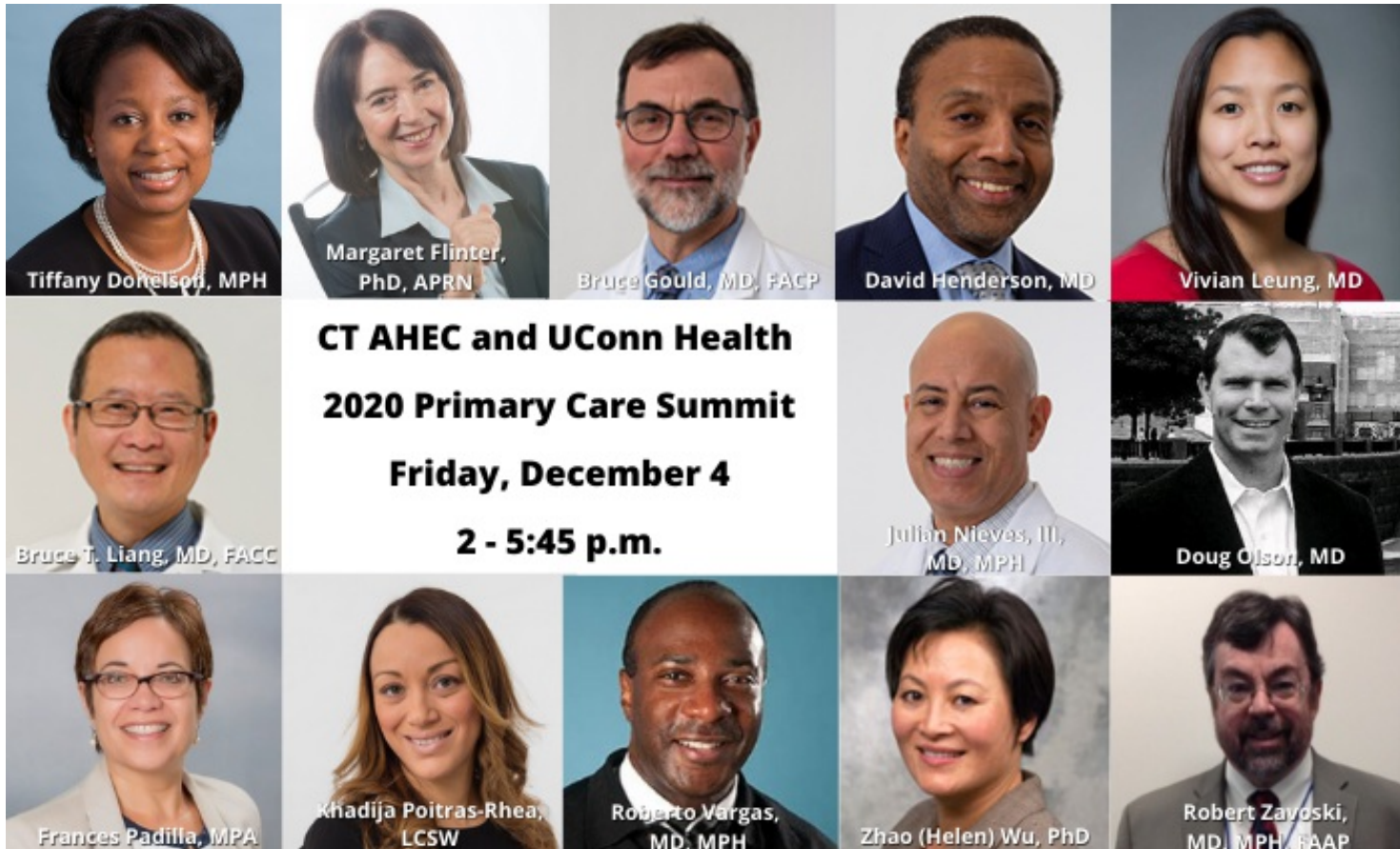




CT AHEC FYI

Connecticut Area Health Education Center Network

Connecting students to careers, professionals to communities and communities to better health.



Supporting Primary Care Workforce Development in Connecticut By:

- ▶ Promoting Strong Community/Academic Partnerships
- ▶ Creating Pipeline Programs for Pre-Health Professions Students
- ▶ Supporting Health Careers Awareness Programming
- ▶ Providing Community-Based Training for Health Professions Students
- ▶ Supporting Community-Based Health Education and Screenings
- ▶ Promoting Strategies to Address Health Disparities

CT AHEC Network Regional Centers:

Central AHEC, Inc. (Hartford, Middlesex and Tolland Counties, Meriden and Wallingford)

www.centralctahec.org

CT AHEC Offers Virtual Primary Care Summit

Health and public health professionals and trainees looking for tools and information to respond to current events are invited to participate in a free, virtual Primary Care Summit sponsored by CT AHEC. Utilizing an innovative online platform, the Summit will focus on primary care, the pandemic, what has worked and what hasn't, as well as responding changes in practice.

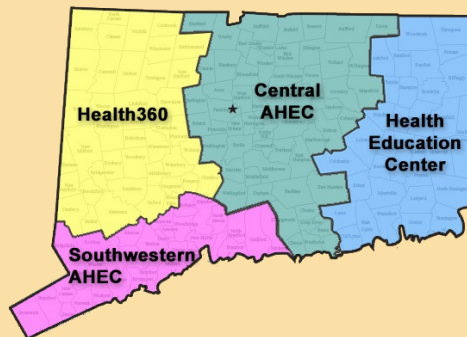
The four-hour conference offers:

- a **keynote** session with distinguished panelists, from the private and public sectors, focusing on primary care at the crossroads and offering lessons learned and mapping for the future
- a **breakout session focusing on underutilized technologies** used in

Health Education Center,
Inc. (Windham and New
London Counties)
www.healtheducenter.org

Health360, Inc.
(Greater Waterbury, Greater
Danbury and Litchfield
County)
www.health360.org

Southwestern AHEC, Inc.
(Southern Fairfield and New
Haven Counties)
www.swctahec.org



primary care that address population health and health disparities

- a **breakout session focusing on the shift to primary care digitization** and its impact on at-risk communities
- a **CME session** on engaging health professions students to build capacity in responding to COVID-19
- a **trainee networking session** focusing on skills and opportunities for healthcare students in training.

[Summit topics, speakers and times can be found here.](#) If you have questions, contact Shannon McClure at smcclure@uchc.edu (preferred) or (860) 679-4223.

The Summit is free and provides attendees with the opportunity to join at whatever time works for their busy schedule. The Summit will run from 2:00 to 5:45 p.m. on Friday, December 4th. [Click here to register now!](#)

The statewide Connecticut Area Health Education Center (CT AHEC) Network, based at UConn Health, is implemented through four regional centers which enable the CT AHEC Network to provide high-quality, efficient, effective and flexible services that meet local needs. Thank you for your continued support of the CT AHEC Network.

Call us at 860-679-7969 or **visit:**
h.uconn.edu/ct-ahec

