



University of Connecticut Health Center Research Training Program in Cell Analysis and Modeling

at the Center for Cell Analysis and Modeling

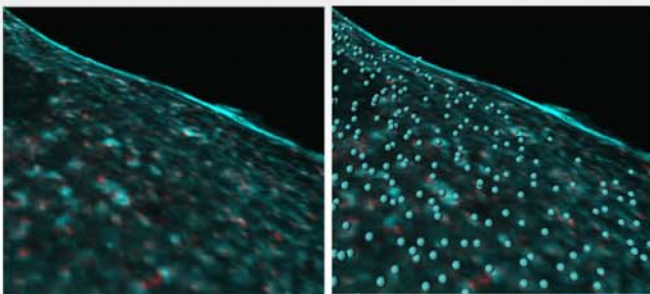
This **interdisciplinary training** program focuses on quantitative analysis of complex cellular pathways. The program is designed for students with math, physics, computer science and traditional biology majors to obtain interdisciplinary training in a unique and highly interactive environment.

Research at the Center for Cell Analysis and Modeling (CCAM) includes experimental biophysics, computational modeling and simulation of cellular events, and new optical methods for quantitative analysis in living cells.

Students work with one of over 17 faculty from within the Biomedical Sciences who make use of CCAM resources to explore biological processes such as signal transduction, cell motility, plasma membrane organization, gene expression, intracellular trafficking, and neurobiology.

Graduate training in Cell Analysis and Modeling (CAM) is in the Ph.D. in Biomedical Science program. Ph.D./M.D. program is available, as well as a competitive stipend and CAM incentives. Deadline for applications is December 15th.

Summer Undergraduate Research internships are awarded each year at a stipend level of \$4000 for 10 weeks from mid June through mid August. Deadline for applications is February 15th.



For more details visit CAM Training at
<http://www.ccam.uchc.edu>
<http://grad.uchc.edu>



Center for Cell Analysis and Modeling
Home of the **Virtual Cell** software for spatial modeling.