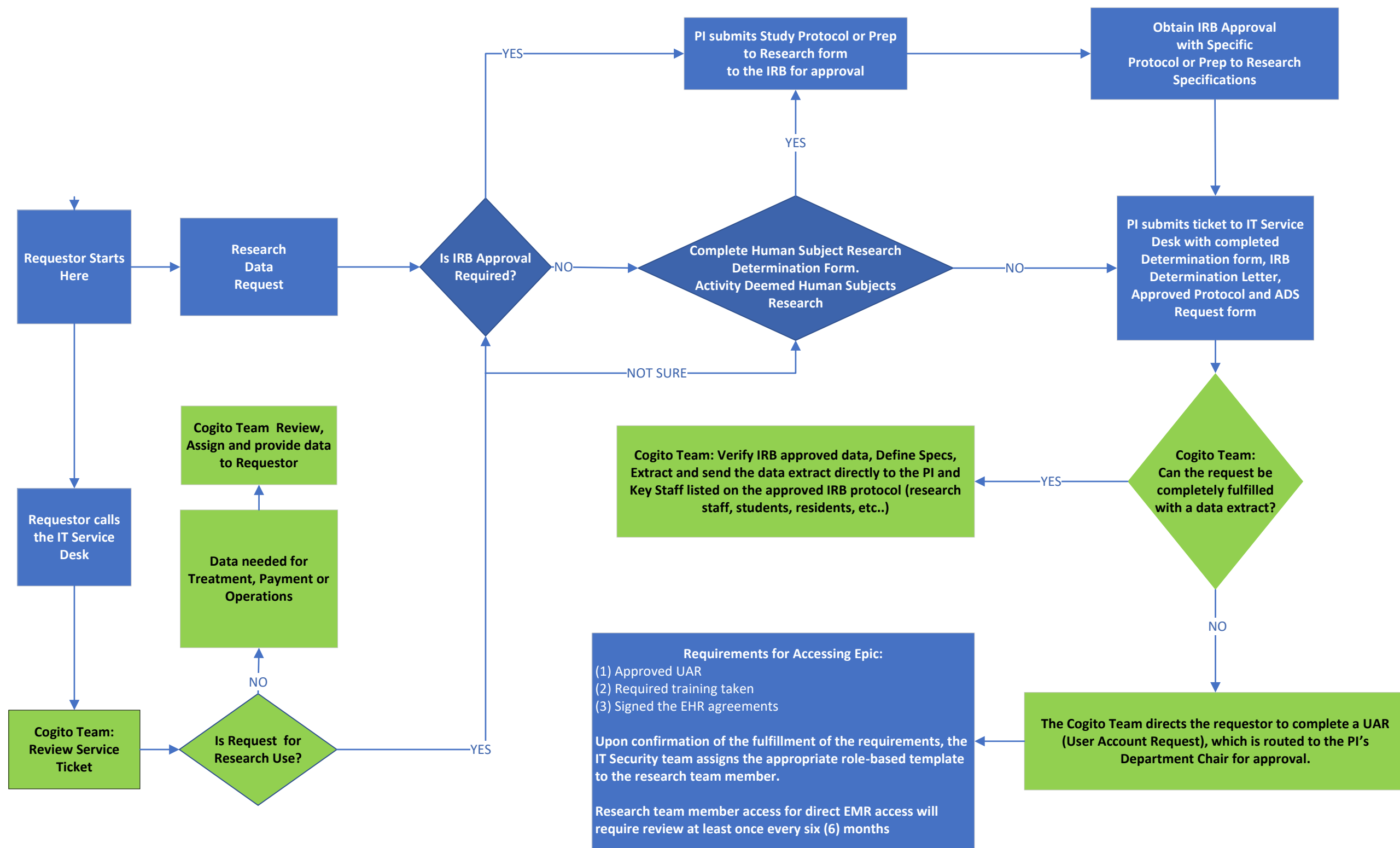


UConn Health Data Requests for Epic and Legacy Clinical Systems



* Table 3. Criteria for Differentiating QI and Research

Criteria	Quality Improvement	Research
Intervention	Accepted practice or treatment intervention not previously implemented	New, untried practice or treatment intervention
Risk	Absence of risk to participants	Presence of risk, however slight, to the participants
Audience	Primary audience is the organization	Primary audience is the scientific community and consumers
	Information is applicable only to the organization	Information is generalizable
Data source	Data from a single organization	Data from multiple organizations